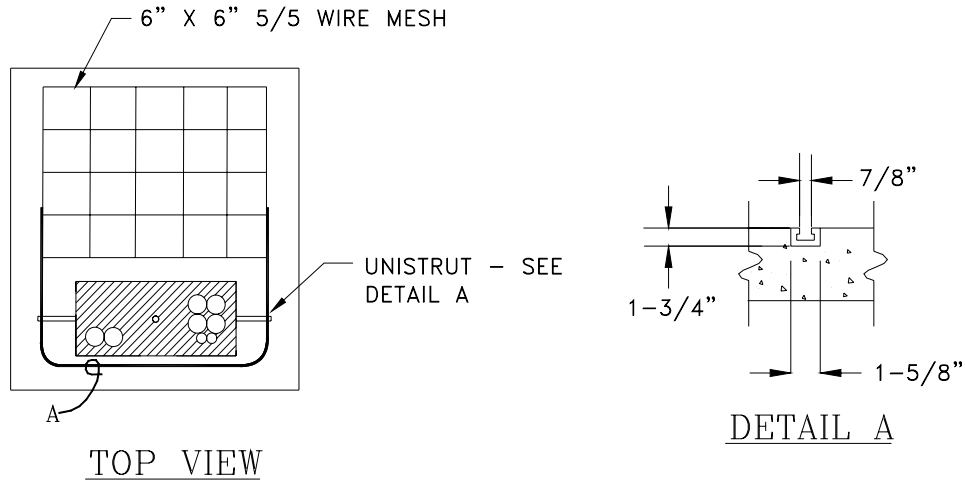


CONSTRUCTION NOTES:

Refer to Construction Standards PE0001U, and PE0003U for spacings and sizing details.

- SPPC Stock # 24-0692 supports a max. weight of 2000 lbs.
- SPPC Stock # 24-0694 supports a max. weight of 5700 lbs.
- Field cast pads as follows:
 1. Compact and level area of proposed pad.
 2. Pad location, forms, layout must be inspected and approved by SPPC prior to pouring concrete (3000 psi at 28 days).
 3. Shaded 'conduit' areas to be free and clear of concrete.
 4. Reinforcing steel to conform to ASTM 615, #4 rebar will be grade 60.
 5. Top of pad shall receive a smooth and level trowel finish. Corners and edges shall be rounded or beveled.
 6. Hold down capabilities will be required on all single phase pads and California three phase pad installations, See Detail A, or coordinate location and quantity of 1/2" inserts as shown in above referenced Standards with SPPC's Inspector.



NON-PREFERRED: POURED IN PLACE PADS

REINFORCEMENT STEEL						
PAD	UNIT	CONFIGURATION	# REQ'D.	LENGTH	TOTAL LENGTH	WEIGHT
24-0692 (1 PHASE 25-167 KVA)	A	25" 25"	1	7'-1"	7'-1"	4.7
		CONCRETE APPROX. = .5 CU. YD.	TOTAL #4 REBAR		7'-1"	4.7
24-0694 (3 PHASE 75-500 KVA)	A	30" 30"	1	9'-10"	9'-10"	6.6
		CONCRETE APPROX. = .75 CU. YD.	TOTAL #4 REBAR		9'-10"	6.6

Sierra Pacific
POWER COMPANY

DRAWN	DESIGN	SUPR	DATE	REV
JL	MB	DA	7/05	04

ENGINEERING & CONSTRUCTION STANDARD

TRANSFORMER / SWITCH

PAD - FIELD CAST

REQUIREMENTS

SHEET 9 OF 48

VOLUME 17

DRAWING NUMBER

PAD01X

**THIS PAGE LEFT
INTENTIONALLY BLANK**



ENGINEERING & CONSTRUCTION STANDARD

SHEET 10 OF 48

TRANSFORMER / SWITCH

VOLUME 17

**PAD - FIELD CAST
REQUIREMENTS**

DRAWING NUMBER

PAD01X

DRAWN	DESIGN	SUPR	DATE	REV
JL	MB	DA	7/05	04