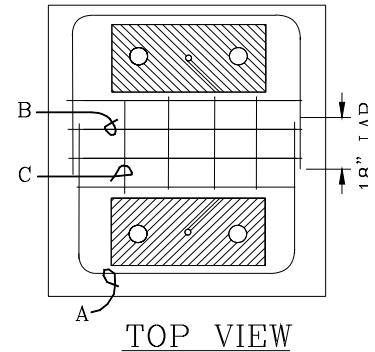


CONSTRUCTION NOTES:

Refer to Construction Standards PE0012U through PE0015U for spacing and sizing details.

- SPPC Stock #24-0726 supports a max. weight of 2600 lbs.
- SPPC Stock #24-0728 supports a max. weight of 2800 lbs.
- SPPC Stock #24-0732 supports a max. weight of 3500 lbs.
- SPPC Stock #24-0736 supports a max. weight of 3800 lbs.
- Field cast pads as follows:
 1. Compact and level area of proposed pad.
 2. Pad location, forms, layout must be inspected and approved by SPPC prior to pouring concrete (3000 psi at 28 days).
 3. Shaded 'conduit' areas to be free and clear of concrete.
 4. Reinforcing steel to conform to ASTM 615, #4 rebar will be grade 60.
 5. Top of pad shall receive a smooth and level trowel finish. Corners and edges shall be rounded or beveled.
 6. Hold down capabilities will be required on all California three phase pad installations, coordinate location and quantity of 5/8" inserts as shown in above referenced Standards with SPPC's Inspector.



NON-PREFERRED: POURED IN PLACE PADS

REINFORCEMENT STEEL						
PAD	UNIT	CONFIGURATION	# REQ'D.	LENGTH	TOTAL LENGTH	WEIGHT
24-0726 PE0012U	A	42" U 48" U 42"	2	11'-0"	22'-0"	22.9
	B	52"	4	4'-4"	17'-4"	18.1
	C	26"	4	2'-2"	8'-8"	9.0
	CONCRETE APPROX. = .35 CU. YD.		TOTAL #5 REBAR		48'-0"	49.9
24-0728 PE0013U	A	42" U 62" U 42"	2	12'-2"	24'-4"	25.4
	B	65"	4	5'-5"	21'-8"	22.6
	C	26"	4	2'-2"	8'-8"	9.0
	CONCRETE APPROX. = .4 CU. YD.		TOTAL #5 REBAR		54'-8"	57.01
24-0732 PE0014U	A	42" U 76" U 42"	4	13'-4"	26'-8"	27.8
	B	18" U 79" U 18"	4	6'-7"	26'-4"	27.5
	C	26"	6	2'-2"	13'-0"	13.6
	CONCRETE APPROX. = .65 CU. YD.		TOTAL #5 REBAR		66'-0"	68.9
24-0736 PE0015U	A	42" U 86" U 42"	4	14'-2"	56'-8"	59.1
	B	89"	4	7'-5"	29'-8"	30.9
	C	26"	8	2'-2"	17'-4"	18.1
	CONCRETE APPROX. = .75 CU. YD.		TOTAL #5 REBAR		103'-8"	108.1

Sierra Pacific
POWER COMPANY

DRAWN	DESIGN	SUPR	DATE	REV
JL	MB	DA	7/05	03

ENGINEERING & CONSTRUCTION STANDARD

**3Ø SWITCH PAD
FIELD CAST
REQUIREMENTS**

SHEET **13** OF 48

VOLUME 17

DRAWING NUMBER
PAD03X

**THIS PAGE LEFT
INTENTIONALLY BLANK**

Sierra Pacific
POWER COMPANY



ENGINEERING & CONSTRUCTION STANDARD

SHEET 14 OF 48

**3Ø SWITCH PAD
FIELD CAST
REQUIREMENTS**

VOLUME 17

**DRAWING NUMBER
*PAD03X***

DRAWN	DESIGN	SUPR	DATE	REV
JL	MB	DA	7/05	03