

PAD AND WELL DETAILS FOR TRANSFORMERS, SWITCHES, AND JUNCTION ENCLOSURES

1.0 INDEX

- 1.0 INDEX
- 2.0 PURPOSE
- 3.0 PAD DIMENSIONS

2.0 PURPOSE

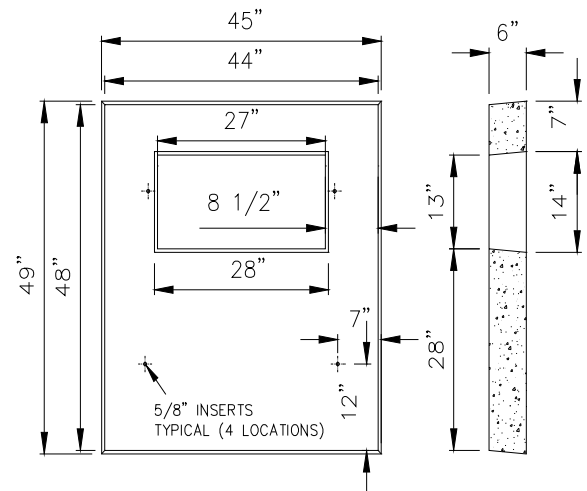
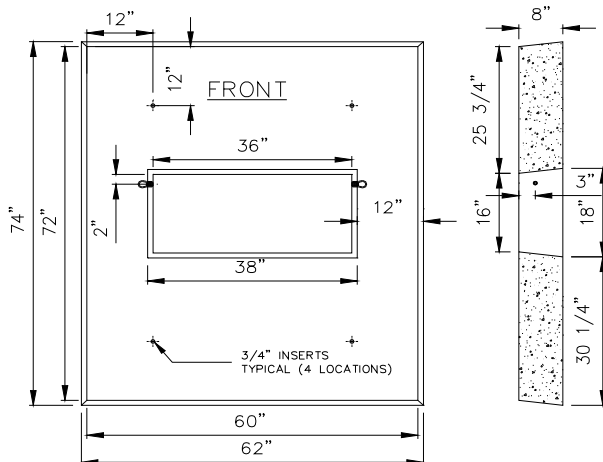
This guide is to provide footprint dimensions on pads used by SPPC for padmounted transformers, switches, and junction enclosures. All dimensions shown reflect the required measurements for each application. Standard construction designs will utilize pre-poured manufactured pads. Should a poured in place pad be required, each pad detail defines the reinforcement steel and specifications required. Refer to PAD01X, PAD02X, and PAD03X for drawings.

Conduit configurations for each installation will differ. A generic conduit layout has been provided on each pad drawing as an example. *SPPC's Planners and Inspectors will provide guidance if configuration is Work Order specific.*

3.0 PAD DIMENSIONS

SPPC STOCK #24-0691
200A / 600A INTERRUPTER
REFER TO DRAWING PE0030U

SPPC STOCK #24-0692
SINGLE PHASE TRANSFORMERS - 81 SERIES
PADMOUNT SWITCHES #25-3912, #25-3937
REFER TO DRAWING PE0001U



ENGINEERING & CONSTRUCTION STANDARD

SHEET 3 OF 48

**PAD & WELL DETAILS FOR
 TRANSFORMERS, SWITCHES,
 & JUNCTION ENCLOSURES**

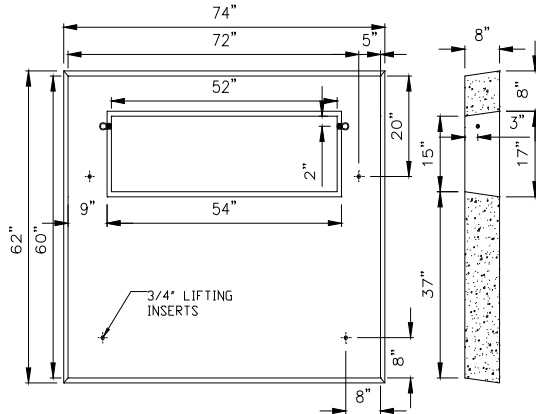
VOLUME 17

DRAWING NUMBER
PADMASTER

DRAWN	DESIGN	SUPR	DATE	REV
JVJ	MB	DA	10/09	4

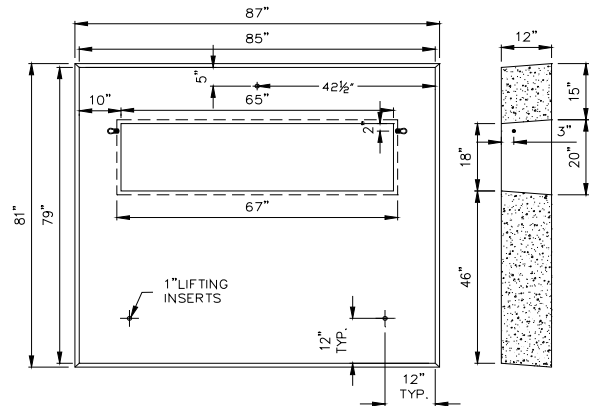
SPPC PAD STOCK #24-0694

**75kva - 500kva TRANSFORMERS
86 SERIES
REFER TO DRAWING PE0003U**



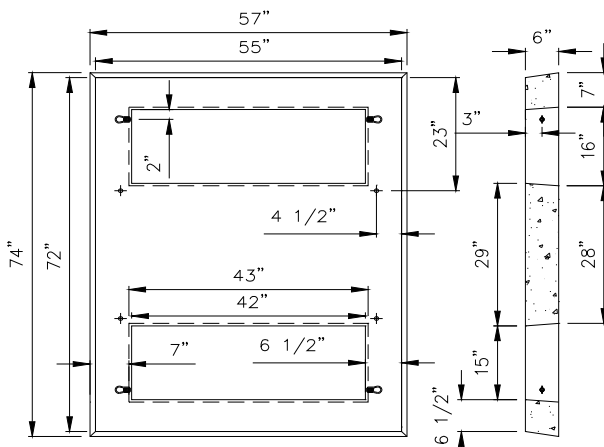
SPPC STOCK #24-0697

**750kva - 2500kva TRANSFORMERS
86 SERIES
REFER TO DRAWING PE0006U**



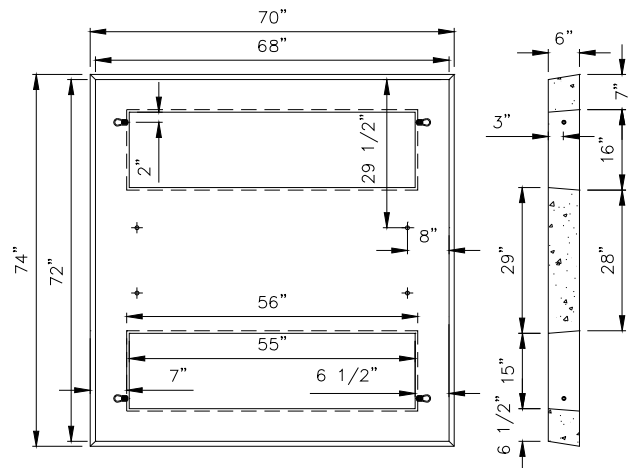
SPPC STOCK #24-0726

**PADMOUNT SWITCHES
#25-3913 & #25-3924**



SPPC STOCK #24-0728

**PADMOUNT SWITCHES #25-3916,
#25-3917, #25-3925**



ENGINEERING & CONSTRUCTION STANDARD

SHEET 4 OF 48

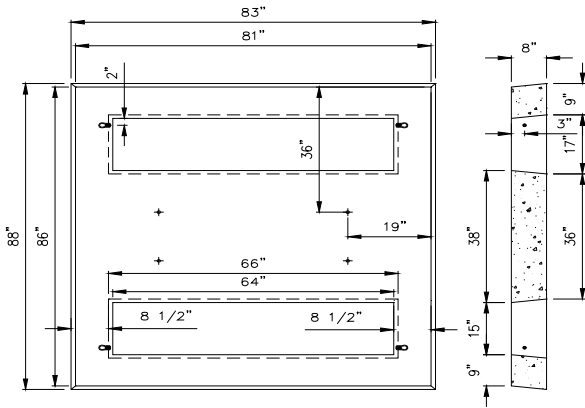
**PAD & WELL DETAILS FOR
TRANSFORMERS, SWITCHES,
& JUNCTION ENCLOSURES**

VOLUME 17

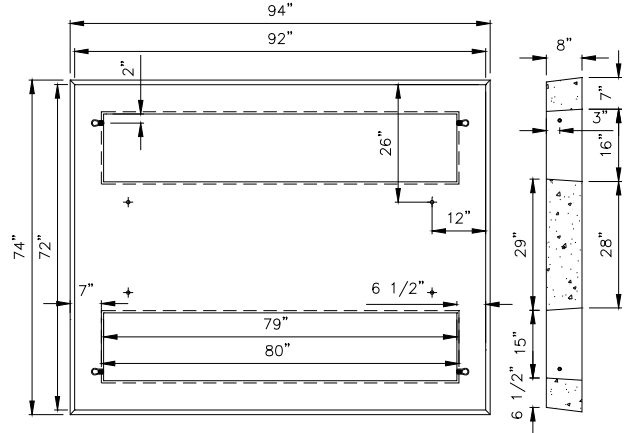
DRAWING NUMBER
PADMASTER

DRAWN	DESIGN	SUPR	DATE	REV
JVV	MB	DA	10/09	4

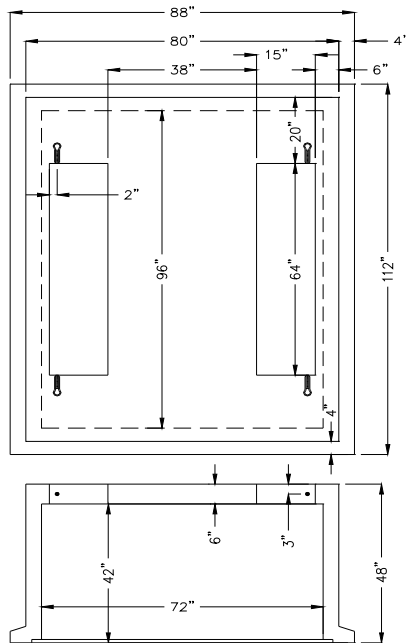
SPPC STOCK #24-0732
PADMOUNT VFISWITCH #25-3928
& #25-3932 OPENING "E1"
REFER TO DRAWING PE0014U



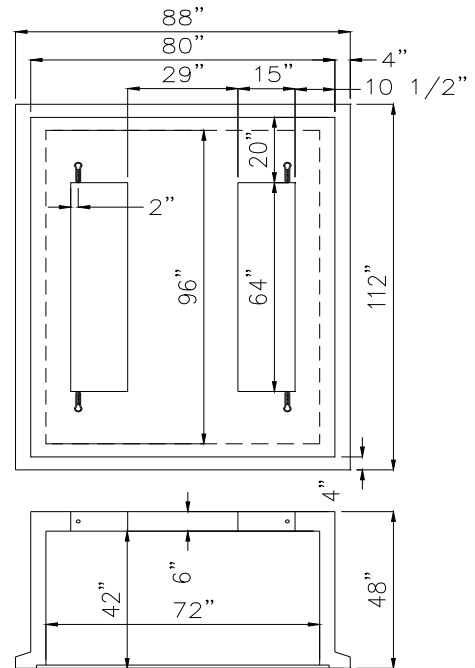
SPPC STOCK #24-0736
PADMOUNT SWITCH #25-3918
OPENING "G"
REFER TO DRAWING PE0015U



SPPC STOCK #24-0730
PADMOUNT SWITCH #25-3934 & #25-3931
SWITCHPAD WELL OPENING "E1"



SPPC STOCK #24-0734
PADMOUNT SWITCH #25-3921
SWITCHPAD WELL OPENING "F"



ENGINEERING & CONSTRUCTION STANDARD

SHEET 5 OF 48

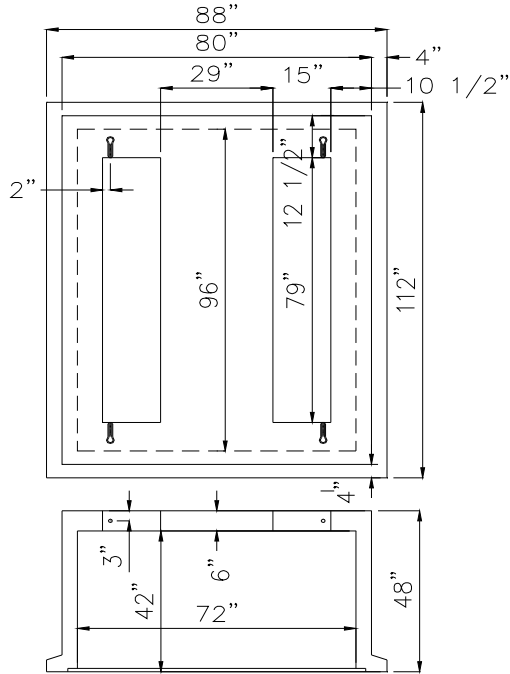
PAD & WELL DETAILS FOR
TRANSFORMERS, SWITCHES,
& JUNCTION ENCLOSURES

VOLUME 17

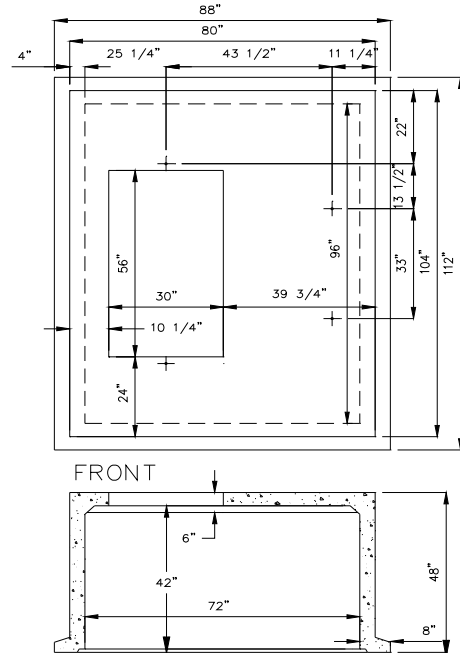
DRAWING NUMBER
PADMASTER

DRAWN	DESIGN	SUPR	DATE	REV
JVV	MB	DA	10/09	4

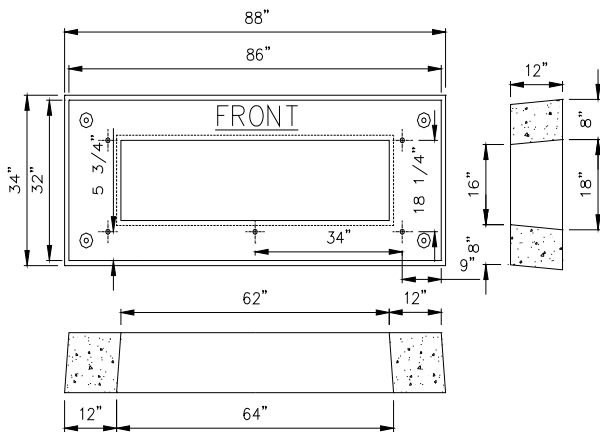
SPPC STOCK #24-0738
PADMOUNT SWITCH #25-3922 & #25-3923
SWITCH PAD WELL OPENING "G"
REFER TO DRAWING PE0018U



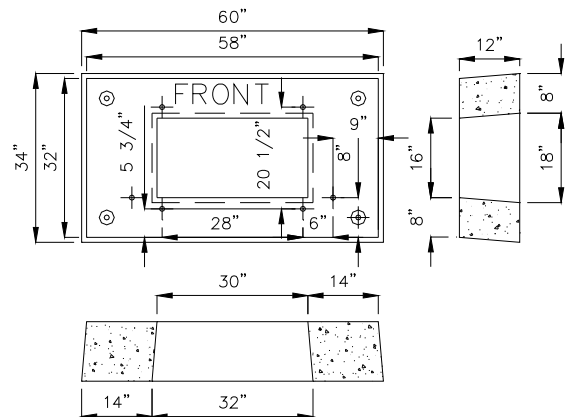
SPPC STOCK #24-0731
PADMOUNT PRIMARY METER-
ING SWITCH PAD WELL
REFER TO DRAWING PE0023U



SPPC STOCK #24-0722
FOR USE WITH 3Ø STEEL
JE #25-2130



SPPC STOCK #24-0721
FOR USE WITH 1Ø STEEL
JE'S #25-2120 & 25-2125



ENGINEERING & CONSTRUCTION STANDARD

SHEET 6 OF 48

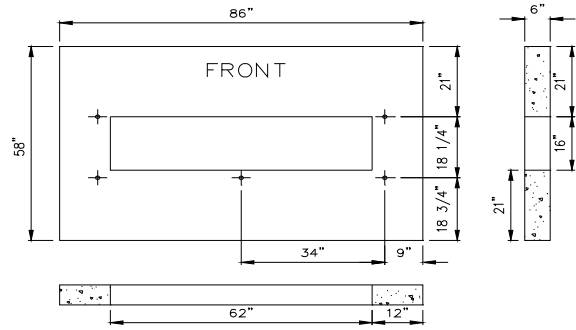
PAD & WELL DETAILS FOR
TRANSFORMERS, SWITCHES,
& JUNCTION ENCLOSURES

VOLUME 17

DRAWN	DESIGN	SUPR	DATE	REV
JVV	MB	DA	10/09	4

DRAWING NUMBER
PADMASTER

SPPC STOCK #24-0724
3Ø JUNCTION ENCLOSURE #25-2130
USED FOR 504 VAULT CONVERSIONS
REFER TO DRAWING PE0025U



SWITCH "EASY-REFERENCE" SUMMARY TABLE

Vol. 5 SSP 'U' Reference.	Pad/Wells/Vault Stock Numbers (sizes)	Vol. 17 Ref.	Switch #	25K V Switch Description
SSP01U	24-0692 pad (44" x 48" X 6")	PE0001U	25-3912	1P, 200AMP, 2 WAY, 1 FUSE WAY, 2UBW
SSP02U	24-0726 pad (55" X 72" x 6")	PE0012U	25-3913	3P, 200AMP, 2 WAY, 1 FUSE WAY, 6UBW
SSP05U	24-0728 pad (68" x 72" x 6")	PE0013U	25-3916	3P, 200AMP, 4 WAY, 0 FUSE WAY, 12UBW
SSP06U, maint. only. (See SSP30U, new)	24-0728 pad (68" x 72" x 6")	PE0013U	25-3917	3P, 200AMP, 4 WAY, 1 FUSE WAY, 12UBW
SSP07U, maint. only. (See SSP30U, new)	24-0736 pad (92" x 72" x 8")	PE0015U	25-3918	3P, 200AMP, 4 WAY, 2 FUSE WAY, 12UBW
SSP15U well SSP16U vault	24-0734 (well) 24-1077 (612 vault)	PE0017U VB0085U	25-3921	3P, 600AMP, 4 WAY, 0 FUSE WAY, 0UBW
SSP18U well, maint. only SSP19U vault, maint. only (See SSP38/39U, new)	24-0738 (well) 24-1076 (612 vault)	PE0018U VB0085U	25-3922	3P, 600/200AMP, 4 WAY, 1 FUSE WAY, 3UBW
SSP21U well, maint. only SSP22U vault, maint. only (See SSP32/33U, new)	24-0738 (well) 24-1076 (612 vault)	PE0018U VB0085U	25-3923	3P, 600/200AMP, 4 WAY, 2 FUSE WAY, 6UBW
SSP30U	24-0732 pad (81" x 86" x 8")	PE00014	25-3928	3P, 200AMP, 4 WAY, 2 VFI, 12UBW
SSP32U SSP33U	24-0730 (well) 24-1075 (612 vault)	PE0016U VB0085U	25-3931	3P, 600/200AMP, 4 WAY, 2 VFI, 6UBW
SSP38U SSP39U	24-0730 (well) 24-1075 (612 vault)	PE0016U VB0085U	25-3934	3P, 600/200AMP, 4 WAY, 1 VFI, 3UBW
SSP50U	24-0692 pad (44" x 48" x 6")	PE0001U	25-3937	1P, 200AMP, 3 WAY, 2 FUSE WAY, 4UBW
SSP52U	24-0726 pad (57" X 74" x 6")	PE0012U	25-3924	3P/1P, 200AMP, 4 WAY, 3P UNSW ITCHED, 3-1P FUSED, 6UBW
SSP54U, maint. only (See SSP56U, new)	24-0728 pad (70" X 74" x 6")	PE0013U	25-3925	3P/1P, 200AMP, 5 WAY, 3P SW ITCHED, 3-1P FUSED, 9UBW
SSP56U	24-0732 pad (81" x 86" x 8")	PE0014U	25-3932	3P/1P, 200AMP, 5 WAY, 3P SW ITCHED, 3-1P VFI, 9UBW
PPM 01U	24-0731 (well)	PE0023U	PRIMARY METER	PRIMARY METERING 200 / 600AMP

Sierra Pacific
POWER COMPANY

DRAWN	DESIGN	SUPR	DATE	REV
JVV	MB	DA	10/09	4

ENGINEERING & CONSTRUCTION STANDARD

**PAD & WELL DETAILS FOR
TRANSFORMERS, SWITCHES,
& JUNCTION ENCLOSURES**

SHEET 7 OF 48

VOLUME 17

**DRAWING NUMBER
PADMASTER**

**THIS PAGE LEFT
INTENTIONALLY BLANK**

Sierra Pacific
POWER COMPANY



ENGINEERING & CONSTRUCTION STANDARD

SHEET 8 OF 48

**PAD & WELL DETAILS FOR
TRANSFORMERS, SWITCHES,
& JUNCTION ENCLOSURES**

VOLUME 17

DRAWN	DESIGN	SUPR	DATE	REV
JVV	MB	DA	10/09	4

**DRAWING NUMBER
PADMASTER**