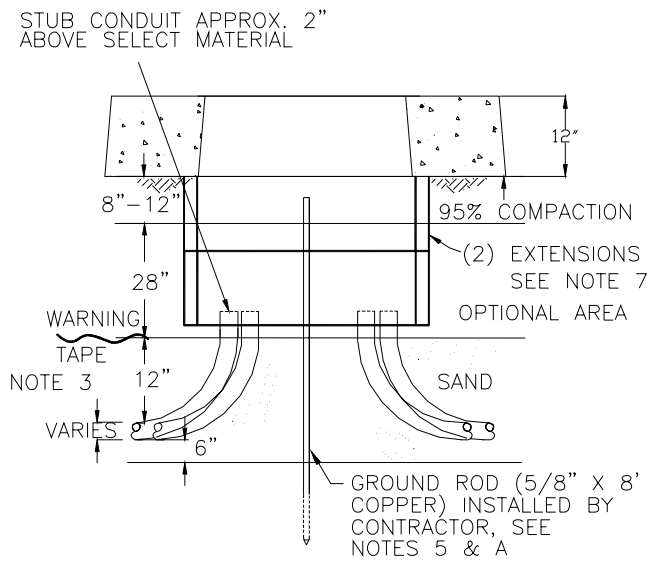
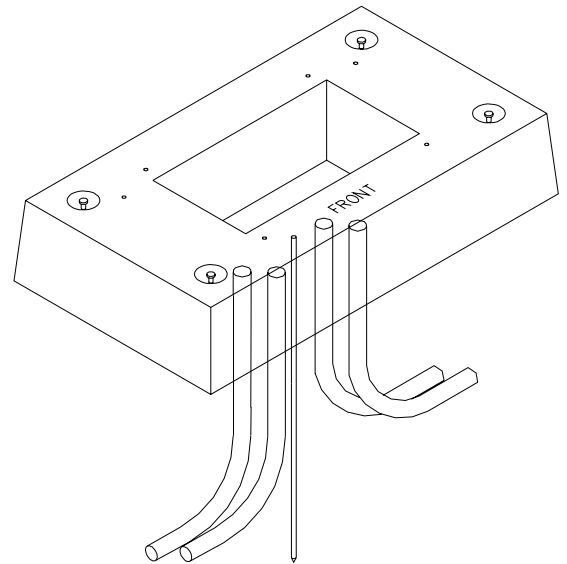


PE0025U



ELEVATION VIEW



ISOMETRIC VIEW

CONSTRUCTION NOTES

1. CONDUITS TO BE IN PROPER CONFIGURATION TO ALLOW CONDUIT SPACING AND PLUGGED PER CD0001U, SECTION 12.1.
2. 8" - 12" TYPE 2 BACKFILL TO BE COMPACTED AT 95%. SEE SUB01X 5.0, SECTION 3, VOLUME 17.
3. OPTIONAL AREA MUST BE COMPACTED TO 90%.
4. SAND AREA TO BE COMPACTED AT 90%, 12" OF SAND MUST COVER THE CONDUIT.
5. GROUND ROD (5/8" X 8' COPPER CLAD), TO BE INSTALLED BY DEVELOPER. TELEPHONE AND CABLE TV GROUND WIRE TO BE ATTACHED BY APPLICANT.
6. IN CALIFORNIA, ALL PAD MOUNTED EQUIPMENT WILL BE SECURED IN PLACE. SEE GO-128, RULE 34.3A.
7. IN LAKE TAHOE AREA, A 17" X 30" (N-36) EXTENSION IS REQUIRED FOR THE SINGLE PHASE PAD. USE REDWOOD OR SEVERAL 17" X 30" CONCRETE EXTENSIONS FOR THE THREE PHASE PAD. FIBERGLASS WELLS ARE AVAILABLE: 24-0723 (1Ø) / 24-0725 (3Ø).
8. THIS PAD DRAWING IS FOR METAL JUNCTION ENCLOSURES, STK. #25-2120, 25-2125 & 25-2130.

ENGINEERING NOTES

- A. IN CALIFORNIA, OR LAKE TAHOE AREAS, IF THE GROUND ROD DOES NOT MEGGER LESS THAN 25 OHMS, ANOTHER GROUND ROD MUST BE DRIVEN. SEE GO-128, RULE 21.5A.
- B. REFERENCE PAD MASTER FOR ADDITIONAL INFORMATION.

Sierra Pacific
POWER COMPANY



ENGINEERING & CONSTRUCTION STANDARD

JUNCTION ENCLOSURE PAD

1Ø / 3 & 4 WIRE

3Ø / 4 WIRE

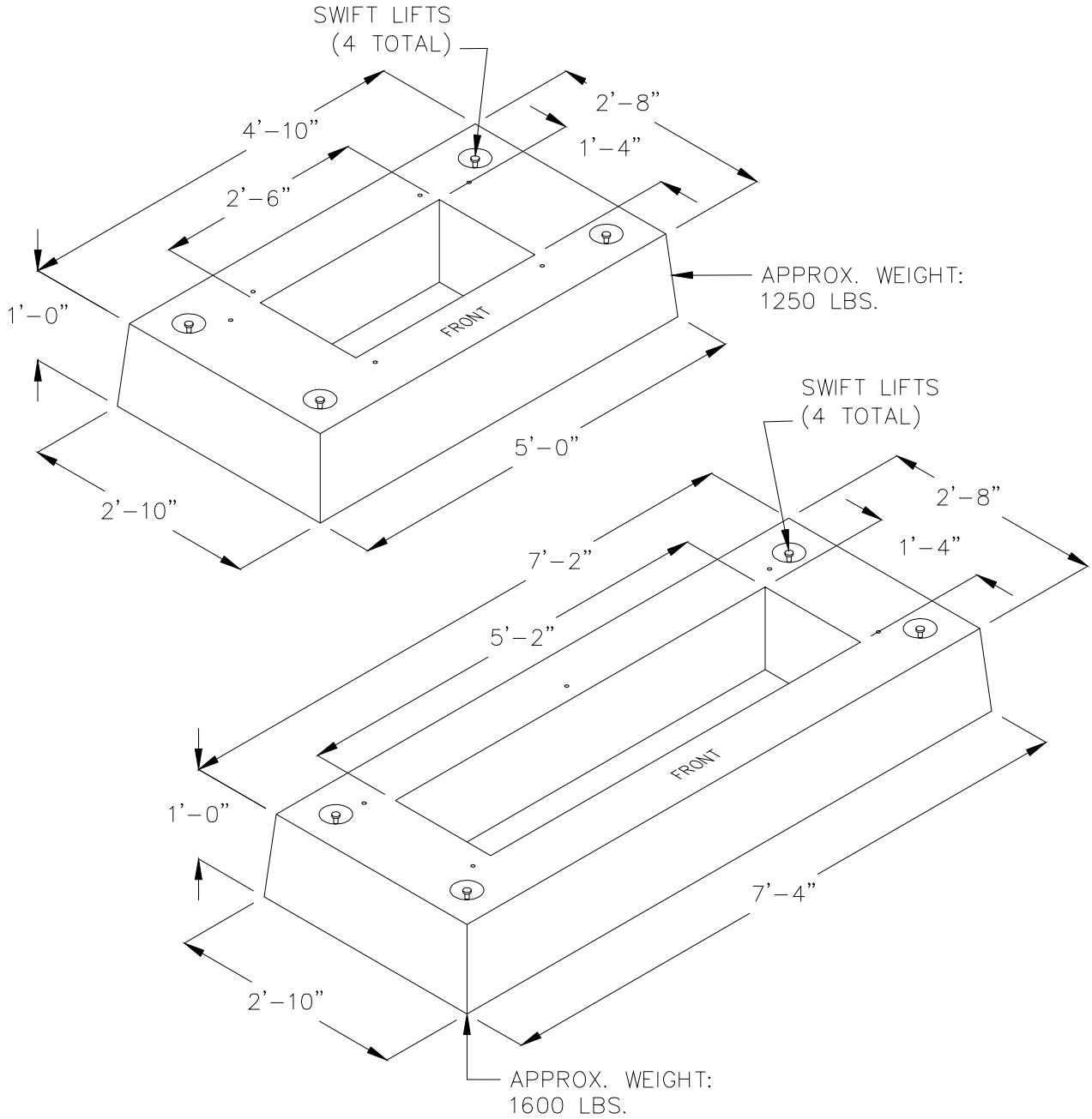
SHEET 31 OF 48

VOLUME 17

DRAWING NUMBER
PE0025U

DRAWN	DESIGN	SUPR	DATE	REV
JV	JF	SJ	5/04	03

JUNCTION ENCLOSURE PAD DETAILS



24-0721 SINGLE / 2 PHASE PAD
24-0722 3-PHASE PAD

Sierra Pacific
POWER COMPANY



ENGINEERING & CONSTRUCTION STANDARD

JUNCTION ENCLOSURE PAD

1Ø / 3 & 4 WIRE

3Ø / 4 WIRE

SHEET **32** OF **48**

VOLUME **17**

DRAWING NUMBER

PE0025U

DRAWN	DESIGN	SUPR	DATE	REV
JVV	JF	SI	5/04	03