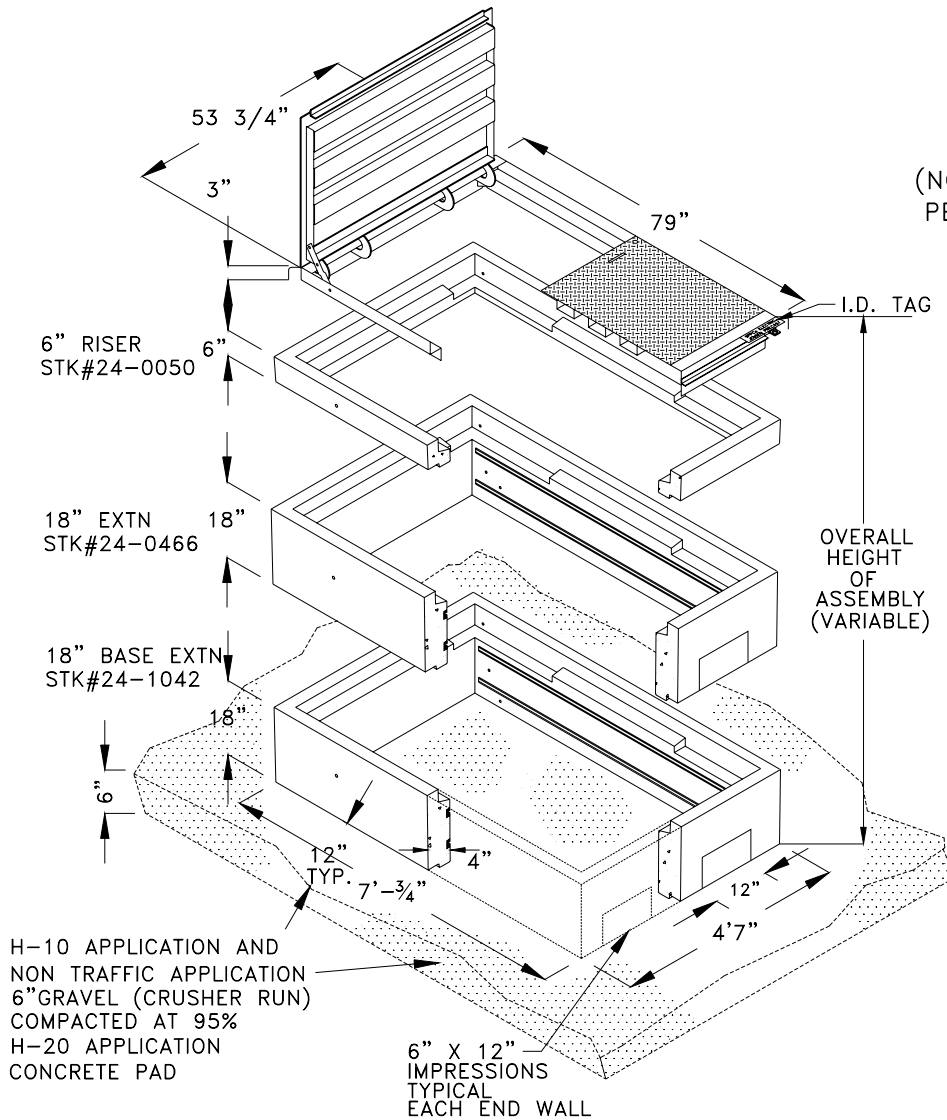


# 573 VAULT ISOMETRIC DETAIL FOR MAINTENANCE ONLY



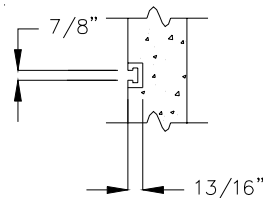
**LID "C"**  
24-1166  
(NON-TRAFFIC STEEL  
PEDESTRIAN RATED)

H-10 APPLICATION AND  
NON TRAFFIC APPLICATION  
6" GRAVEL (CRUSHER RUN)  
COMPACTED AT 95%  
H-20 APPLICATION  
CONCRETE PAD

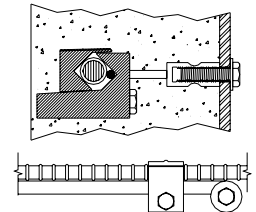
6" X 12"  
IMPRESSIONS  
TYPICAL  
EACH END WALL

OVERALL  
HEIGHT  
OF  
ASSEMBLY  
(VARIABLE)

STK#	DESCRIPTION	WEIGHT (LBS)
24-0050	6" CONCRETE EXTENSION	475
24-0466	18" CONCRETE EXTENSION / IMPRESSIONS AT BOTH ENDS	1407
24-1167	LID A H-10 full opening spring assisted	794
24-1295	LID B H-20 full opening lift out	4086
24-1166	LID C NON TRAFFIC RATED STEEL full opening spring assisted	600
24-1169	LID C-1 FIBERGLASS HYBRID NON TRAFFIC RATED clam shell opening NOT AVAILABLE-FOR REFERENCE ONLY	80



UNISTRUT  
DETAIL "A"



COPPER PIGTAIL TO BE SECURED  
TIGHTLY TO REINFORCING BAR  
WITH CLAMP BEFORE POURING  
CONCRETE.

GROUND INSERT  
DETAIL "B"



ENGINEERING & CONSTRUCTION STANDARD

SHEET 15 OF 46

**573 VAULT CONCRETE  
MAINTENANCE ONLY  
(REPLACED WITH 557)  
49" X 79" X 45" I.D.**

VOLUME 17

DRAWING NUMBER  
**VB0067U**

DRAWN	DESIGN	SUPR	DATE	REV
JVJ	JK	SJ	7/07	2

**573 VAULT CONSTRUCTION NOTES**

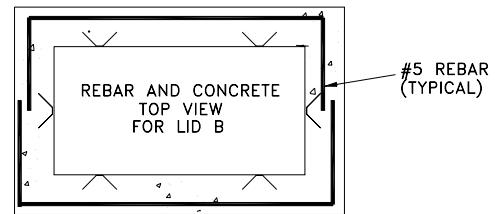
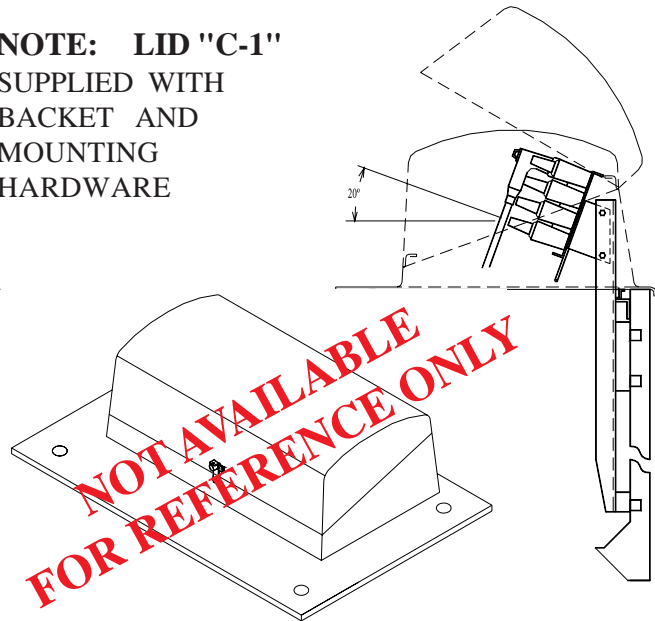
- H-10 and NON TRAFFIC: Installed on 6" of 3/4" crusher run or type 2 backfill compacted at 95%.
- H-20: Vault installed on a concrete base extending 12" beyond vault walls, lid wrapped as shown in Details B and C.
- Height of vault varies depending on height of each extension and lid.
- Vault excavation and backfill to conform to SPPCO Specification SUB01X.
- Butyl rubber or neoprene gasket seal required between vault sections and/or extensions.
- Unistrut or 1/2" inserts will be cast into vault. (See Detail A)
- Lids to be marked "SPPCo Electric"
- All weights to be clearly marked.
- Cable steps: Are not supplied with this vault, see SPPCO Standard CBR02U, Volume 5.
- Existing cable dictates location of cable racks and entrance.
- Ladder not supplied with vault but will be required for access.

**LID "C-1"**

24-1169

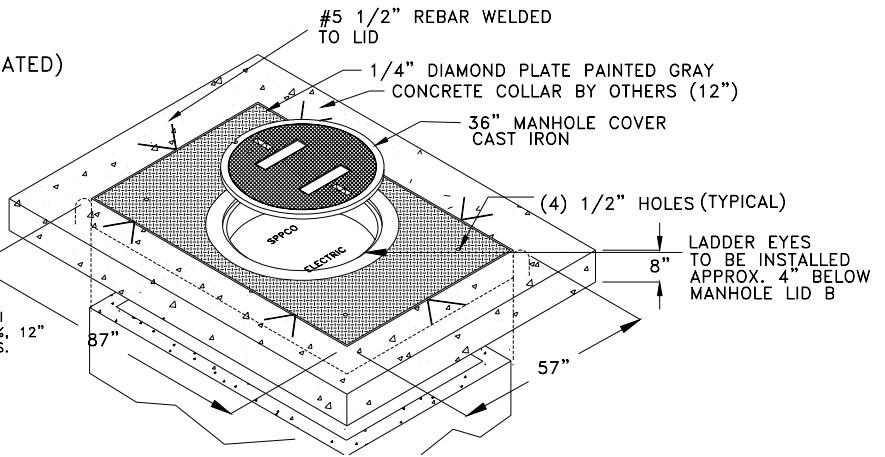
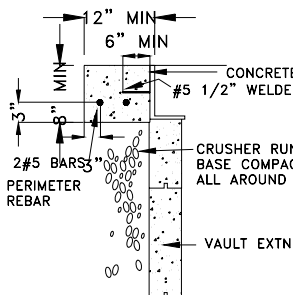
(NON TRAFFIC RATED)

**NOTE: LID "C-1" SUPPLIED WITH BUCKET AND MOUNTING HARDWARE**



**LID B**  
24-1295  
(H-20 TRAFFIC RATED)

REBAR AND CONCRETE CUTAWAY VIEW FOR LID B



ENGINEERING & CONSTRUCTION STANDARD

SHEET 16 OF 46

**573 VAULT CONCRETE MAINTENANCE ONLY (REPLACED WITH 557) 49" X 79" X 45" I.D.**

VOLUME 17

DRAWING NUMBER **VB0067U**

DRAWN	DESIGN	SUPR	DATE	REV
JVV	JK	SJ	7/07	2