

612 VAULT ISOMETRIC DETAIL

**NOTE: LID IS NOT CENTERED,
COORDINATE POSITIONING
WITH INSPECTOR.**

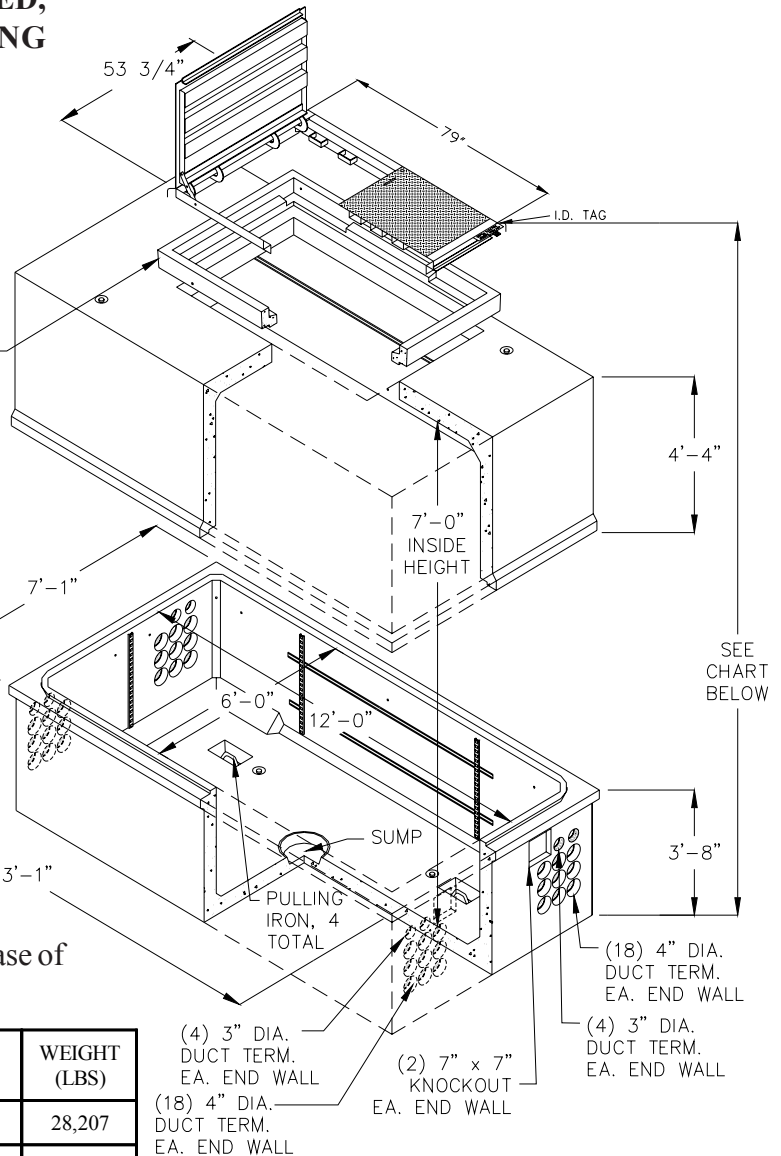
LID C
24-1166
(NON TRAFFIC RATED)

6" EXTENSION
24-0050

612 VAULT
24-1060

STREET SIDE

Note: Install on a 6" min. base of 3/4" drain rock.



STK#	DESCRIPTION	WEIGHT (LBS)
24-1060	612 VAULT TWO SECTIONS	28,207
24-0050	6" EXTENSION standard	193
24-0466	18" EXTENSION standard	1407
24-1167	LID A H-10 spring assisted	794
24-1295	LID B H-20	4086
24-1305	LID B-1 H20 w/vault section 3' opening	16,000
24-1166	LID C pedestrian rated spring assisted	600
24-1075	SWITCH OPENING "E" 5'4" X 13"	16,000
24-1077	SWITCH OPENING "F" 5'4" X 15"	16,000
24-1076	SWITCH OPENING "G" 6'7" X 15"	16,000

NOTE: 24-1305 COMES WITH 6" GRADE RING AND MANHOLE TOTAL WEIGHT 1,141 LBS

HEIGHT OF VAULT W/6" EXT & CORRESPONDING LIDS	LADDER LENGTH W/EXT
8'-9" WITH LID A & C	8'-6"
9'- 8" WITH LID B	8'-6"
8'-11" WITH LID B-1	8'
8' WITH SWITCH TOP SECTIONS E,F,& G	8'

Sierra Pacific
POWER COMPANY

ENGINEERING & CONSTRUCTION STANDARD

SHEET 21 OF 46

**612 VAULT
CONCRETE PRIMARY
6'X12'X7'I.D.**

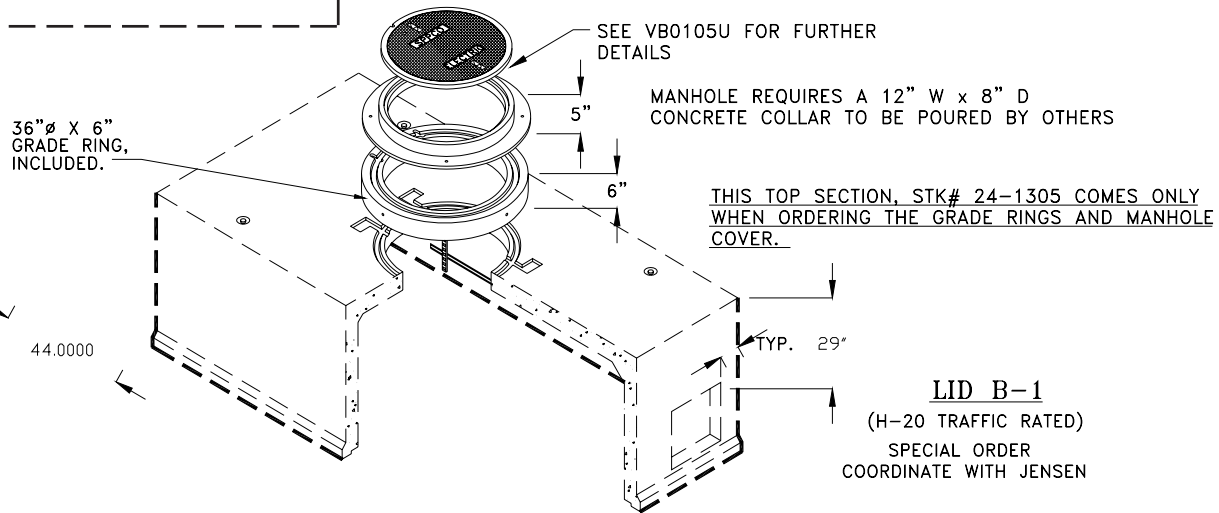
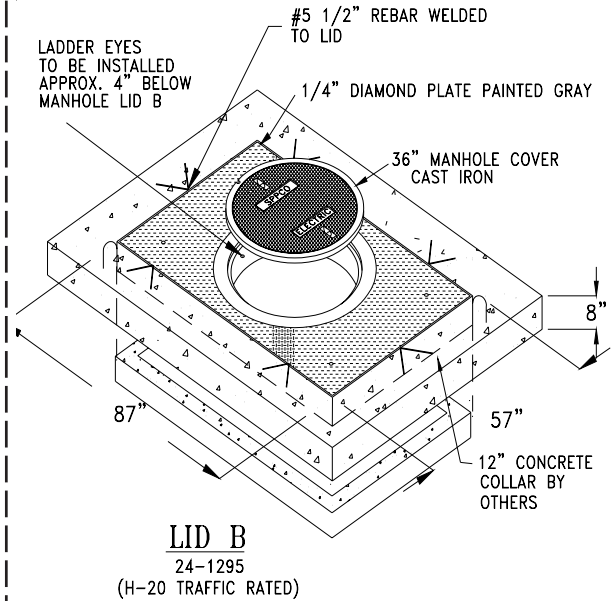
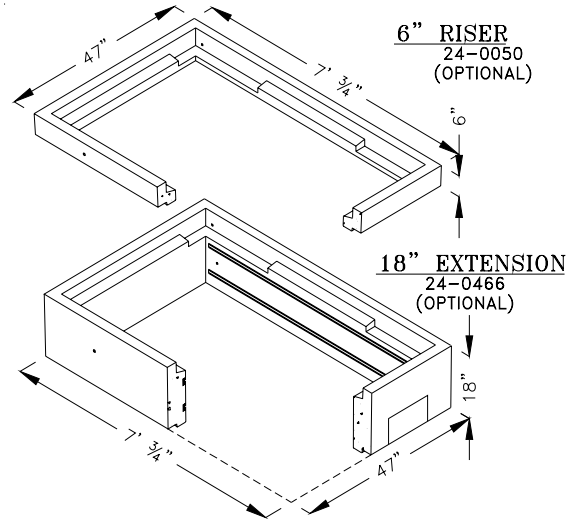
VOLUME 17

DRAWING NUMBER
VB0085U

DRAWN	DESIGN	SUPR	DATE	REV
JVJ	MB	DA	10/07	4

612 VAULT CONSTRUCTION NOTES:

- Vault to be used for H-20 traffic design loading. All live loads shall be for HS-20 - 44 (MS-18) as per AASHTO standard spec Div 1 Sec.3
Note: If lid B or B-1 is used, a minimum of 12 inches of vault cover is required.
- Vault excavation and backfill to conform to SPPC Specification SUB01X.
- Butyl rubber or neoprene gasket seal required between vault sections and/or extensions.
- Additional 6" extension will be installed on all vaults for elevation and lid options.
- Unistrut (See detail A) or 1/2" inserts will be cast into vault.
- Lids to be marked "SPPC Electric"
- All weights to be clearly marked
- 12 -15" steps are supplied with vault.
- Grounding: See expanded view for grounding applications and inserts.
- 2/0 CU (# 17-0910) grounding grid is needed if equipment is placed in vault. Wire needs to be ordered separately (approx. 42')
- Ladder and ladder-up required. See SPPC Standard VB105U.
- Ladder mounting eyes to be installed on lids A and B.
- When ordering designate vault cover. *Note: vault has a different top section for lid B-1, opening E, F, and G.*



DRAWN	DESIGN	SUPR	DATE	REV
JVW	MB	DA	10/07	4

ENGINEERING & CONSTRUCTION STANDARD

612 VAULT

CONCRETE PRIMARY

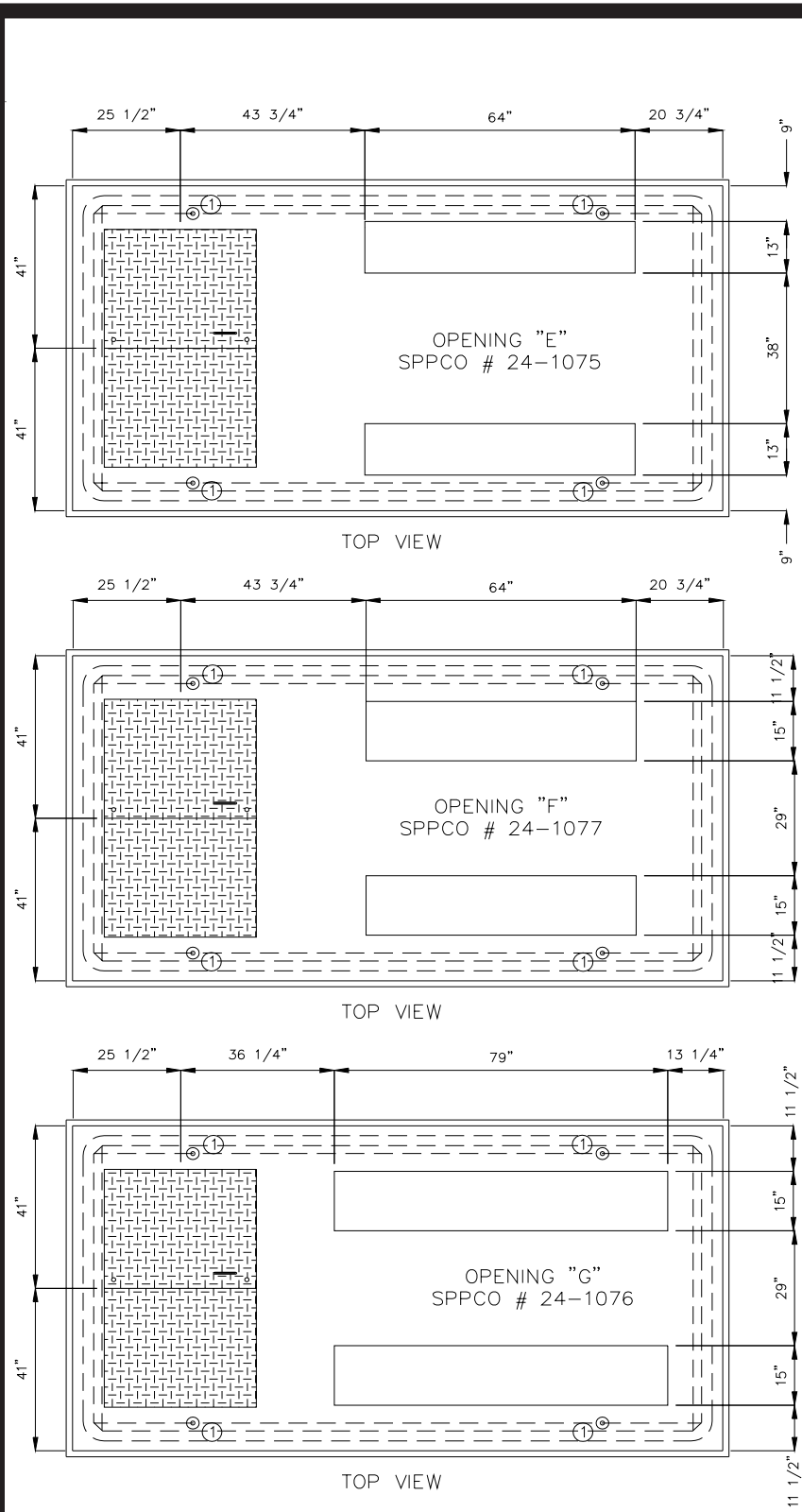
6'X12'X7'I.D.

SHEET 22 OF 46

VOLUME 17

DRAWING NUMBER

VB0085U



SWITCH OPENING NOTES:

- Reference Padmaster in Volume 17, Section 6, Sheet 7 for complete cross reference for switches and substructures.
- If J-bar or unitized bracket is used, application will be operated as non loadbreak. An alternate loadbreak application would be to use feed-thru bushings on the 200amp sections of switches, providing multiple taps.
- Top section of existing 612 vaults may be retrofitted with one of the top sections with openings E, F, or G, refer to drawings at left.
- All vaults designed or retrofitted with equipment will have a ground grid installed per Reference sheet 27, grounding grid detail .

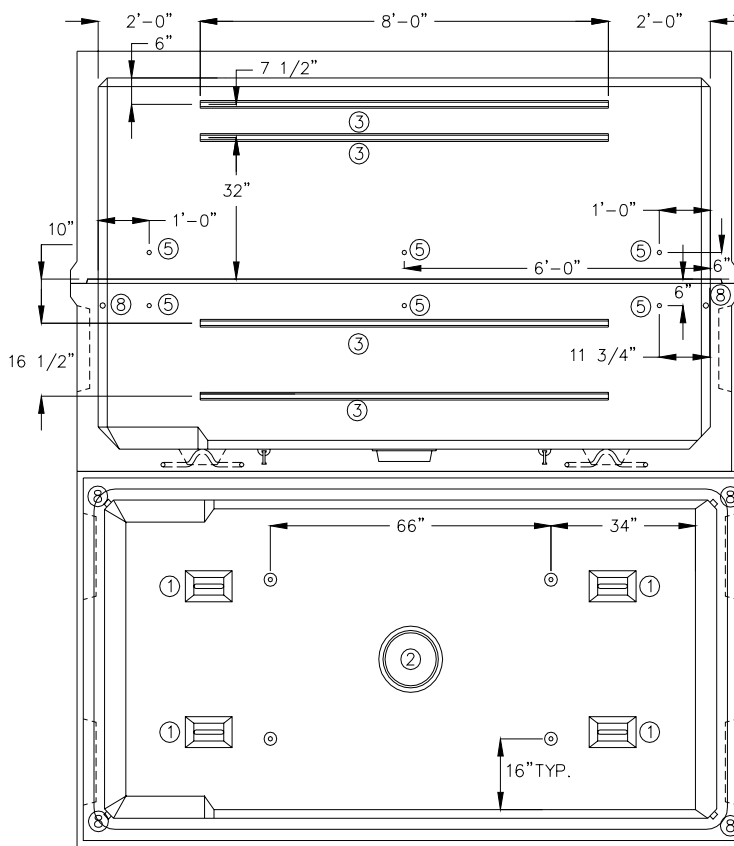
DRAWN	DESIGN	SUPR	DATE	REV
JVW	MB	DA	10/07	4

ENGINEERING & CONSTRUCTION STANDARD
612 VAULT
CONCRETE PRIMARY
6'X12'X7'I.D.

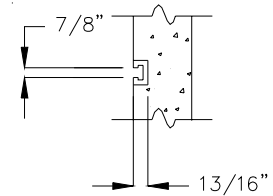
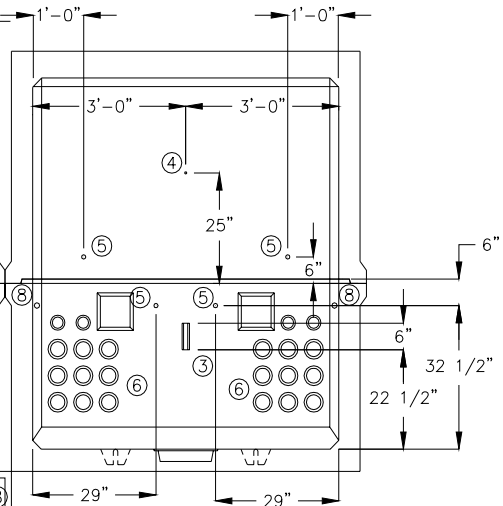
SHEET **23** OF **46**
 VOLUME **17**
 DRAWING NUMBER
VB0085U

612 VAULT EXPANDED VIEWS

EXPANDED INSIDE TOP SIDE VIEW

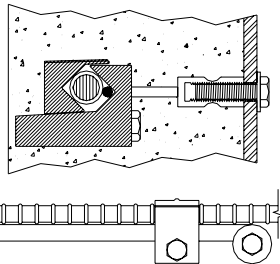
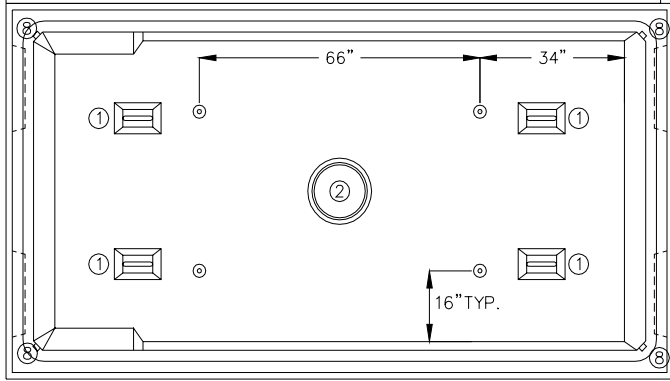


EXPANDED INSIDE TOP AND BOTTOM END VIEW



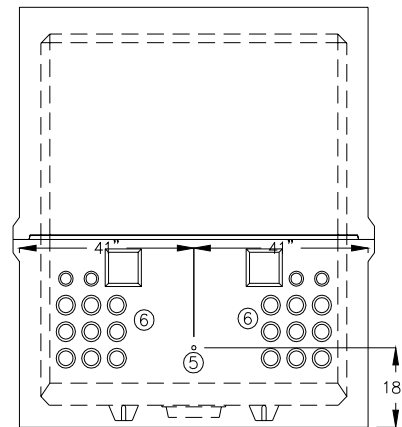
UNISTRUT
DETAIL "A"

EXPANDED INSIDE BOTTOM SIDE VIEW



COPPER PIGTAIL TO BE SECURED TIGHTLY TO REINFORCING BAR WITH CLAMP BEFORE POURING CONCRETE.

GROUND INSERT
DETAIL "B"



OUTSIDE BOTTOM & TOP END VIEW
GROUNDING INSERTS

Sierra Pacific
POWER COMPANY

ENGINEERING & CONSTRUCTION STANDARD

SHEET 24 OF 46

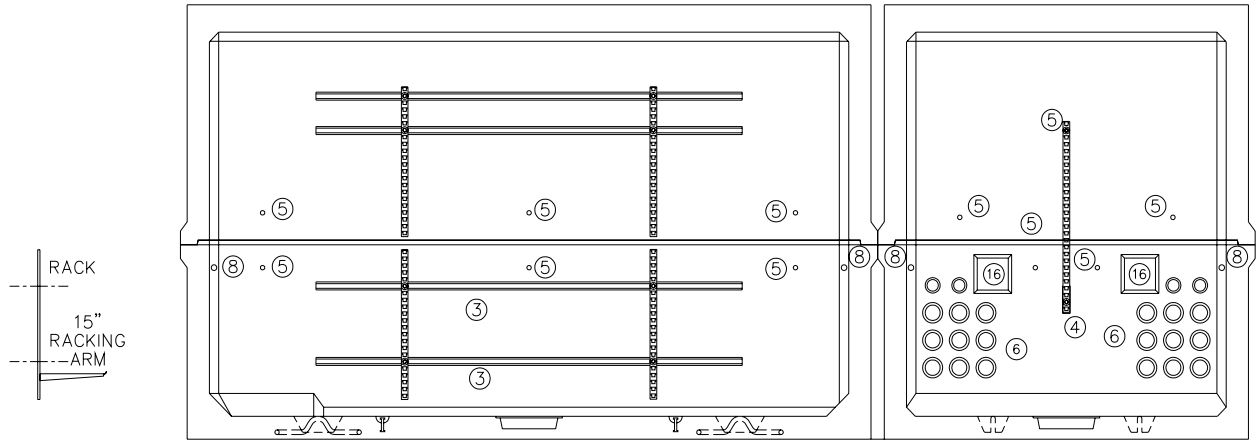
612 VAULT
CONCRETE PRIMARY
6'X12'X7'I.D.

VOLUME 17

DRAWING NUMBER
VB0085U

DRAWN	DESIGN	SUPR	DATE	REV
JVV	MB	DA	10/07	4

GROUNDING GRID INSTALLATION DETAIL

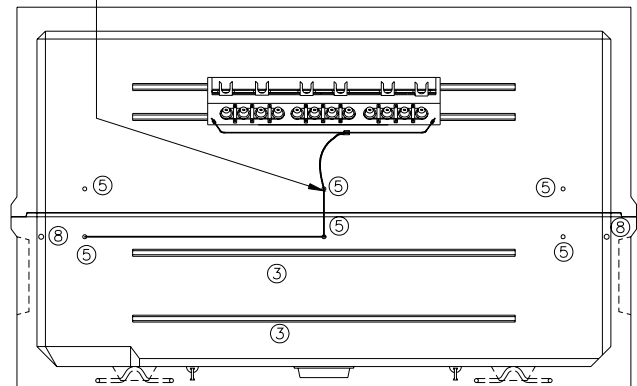


INSIDE EXPANDED SIDE & END WALLS
RACK APPLICATIONS WITH ARMS

MATERIAL LIST <i>supplied by Vault Manufacturer</i>		
DESCRIPTION	QTY	
1. PULLING IRON	4	
2. 12" DIAMETER SUMP	1	
3. 96" LONG UNISTRUT side walls	8	
6" LONG UNISTRUT end walls	2	
4. 1/2" RACKING INSERT	2	
5. 1/2" GROUNDING INSERT, 20 inside - 2 outside	22	
6. 3" DUCT TERMINATOR 4 (each end)	8	
4" DUCT TERMINATOR 18 (each end)	36	
7. 22 HOLE RACK (32 3/4" LONG) side top&bottom	8	
28 HOLE RACK (41 3/4" LONG) end	2	
8. 5/8" INSERTS FOR WIRE TRAINING corners	4	
9. SPRING NUT	18	
10. 1/2 X 1 1/2" BOLT	21	
11. 1/2" WASHER	20	
12. 1/2" BRASS GROUND WASHER, 1 top outside	1	
13. 15" ARM	12	
14. LADDER UP	1	
15. LADDER size options on sheet one	1	
16. 7" X 7" KNOCKOUT	4	

SPLICE ONLY: INSTALL A MINIMUM OF 14' OF 2/0 COPPER TO THREE GROUNDING LUGS ATTACHED TO THREE 1/2" GROUNDING INSERTS AND BUS TO CONCENTRIC NEUTRAL, J-BAR OR BRACKET.

EQUIPMENT INSTALLATION: INSTALL 45' OF 2/0 COPPER GROUND GRID, TIE TO ALL SECTIONS AND LOOP THROUGH 10 GROUNDING LUGS ATTACHED TO 1/2" GROUNDING INSERTS AROUND VAULT AND BUS TO TRANSFORMER, CONCENTRIC NEUTRAL, J-BAR OR BRACKET.



INSIDE EXPANDED SIDE WALLS
GROUNDING APPLICATIONS AND INSERTS

MAXIMUM CONDUCTORS AND J-BARS					
	200 AMP PRIMARY	600 AMP PRIMARY	SECONDARY	EQUIPMENT	J BARS 3, 4 OR 5 WAY
VAULT 612	18 12 0	0 6 12	2 SET ≤ 750 QX OR TX	1-50 KVA PADMOUNTED SWITCH	3 TOTAL

NOTE: REFER TO CAB09U VOLUME 5 FOR COMPLETE APPLICATION



ENGINEERING & CONSTRUCTION STANDARD

SHEET 25 OF 46

612 VAULT
CONCRETE PRIMARY
6'X12'X7'I.D.

VOLUME 17

DRAWING NUMBER
VB0085U

DRAWN	DESIGN	SUPR	DATE	REV
JVJ	MB	DA	10/07	4

**THIS PAGE LEFT
INTENTIONALLY BLANK**

Sierra Pacific
POWER COMPANY



ENGINEERING & CONSTRUCTION STANDARD

SHEET 26 OF 46

**612 VAULT
CONCRETE PRIMARY
6'X12'X7'I.D.**

VOLUME 17

**DRAWING NUMBER
VB0085U**

DRAWN	DESIGN	SUPR	DATE	REV
JVV	MB	DA	10/07	4