

814 VAULT ISOMETRIC DETAIL

LID "B"
24-0002
102- $\frac{1}{2}$ " X 60- $\frac{1}{2}$ "
EQUIPMENT ACCESS COVER
SUPPLIED WITH VAULT

12" RISER
24-0739

LID B-1
SEE VB105U FOR
FURTHER DETAILS

3" GRADE RING
STK# 24-0742

12" GRADE RING
STK# 24-0746

OPTIONAL
SECOND
RISER SECTION

814 VAULT
24-1062

SEE
HEIGHT
CHART
BELOW

Note: Install on a 6" min. base of
3/4" drain rock.

STK#	DESCRIPTION	WEIGHT (LBS)
24-1062	814 VAULT	53,250
24-0739	12" RISER for lid B	1,993
24-0002	LID B H-20 equipment	5,200
24-1215	LID B-1 H-20 3' manhole	800
24-0746	12" GRADE RING for MH	682
24-0744	6" GRADE RING for MH	341
24-0742	3" GRADE RING for MH	166
24-1340	LID D GRATE maint only	700

HEIGHT OF VAULT WITH CORRESPONDING LIDS	LADDER LENGTH
15'-0" W/2 EXT & LIDS B & B-1	13'-6"
11'-0" W/1 EXT & LIDS B & B-1	9'-6"
NOTE: VAULT INCLUDES 12" RISER, LIDS B & B-1, AND 3" AND 12" GRADE RINGS FOR LID B-1	

Sierra Pacific
POWER COMPANY

ENGINEERING & CONSTRUCTION STANDARD

SHEET 27 OF 46

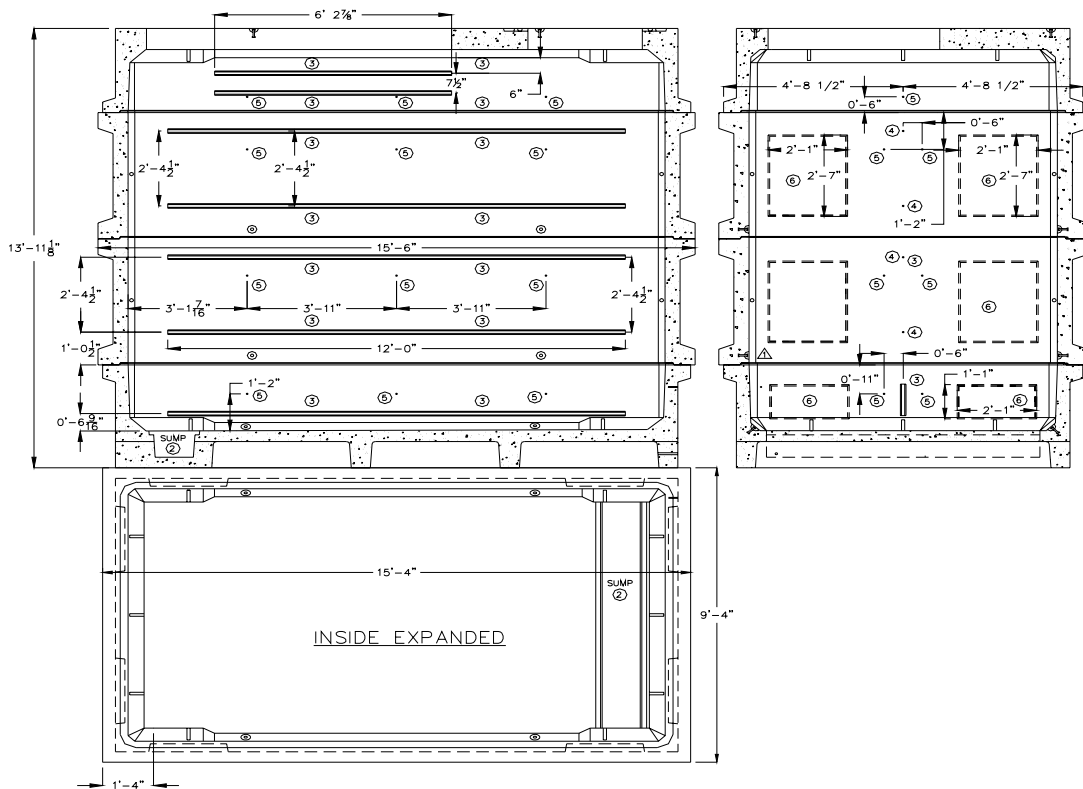
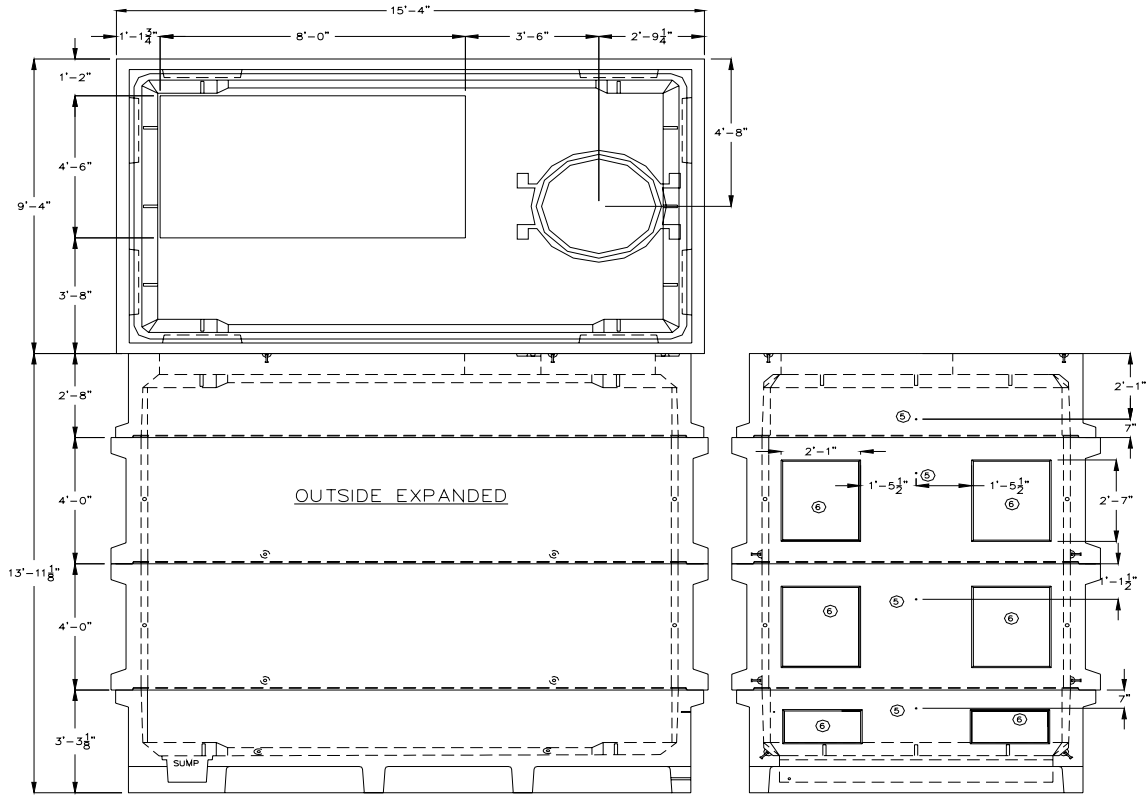
814 VAULT
CONCRETE PRIMARY
8' X 14' X 12' I.D.

VOLUME 17

DRAWING NUMBER
VB0090U

DRAWN	DESIGN	SUPR	DATE	REV
JVV	MB	DA	10/07	4

814 VAULT EXPANDED VIEWS



Sierra Pacific
POWER COMPANY

ENGINEERING & CONSTRUCTION STANDARD

SHEET 28 OF 46

814 VAULT
CONCRETE PRIMARY
8' X 14' X 12' I.D.

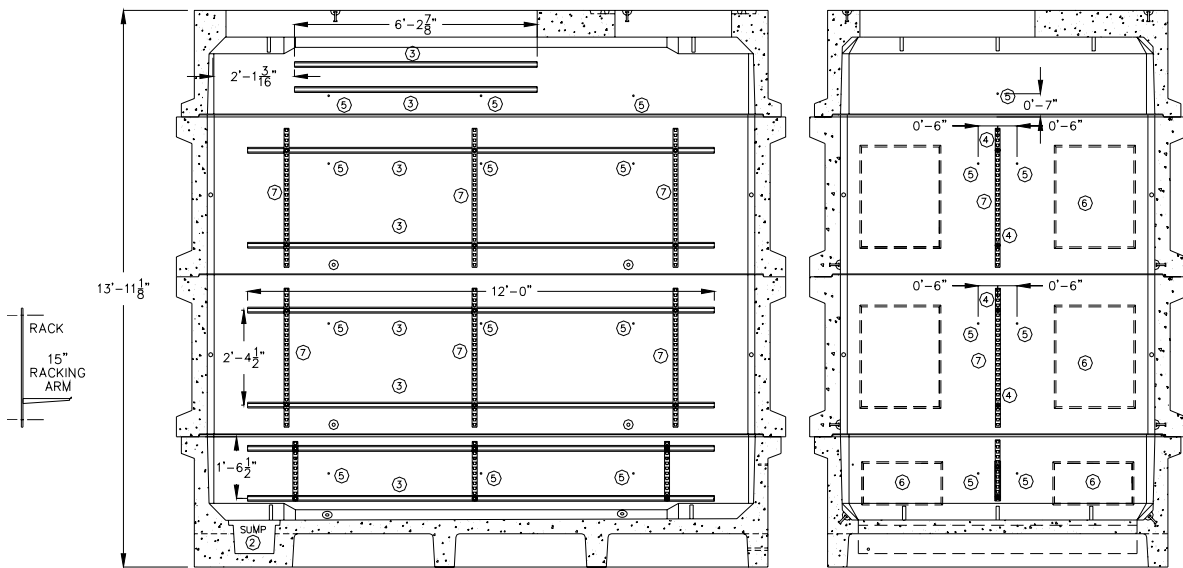
VOLUME 17

DRAWN	DESIGN	SUPR	DATE	REV
JVV	MB	DA	10/07	4

DRAWING NUMBER
VB0090U

814 VAULT CONSTRUCTION NOTES:

- Vault to be used for H-20 traffic design loading. All live loads shall be for HS-20-44 (MS-18) as per AASHTO Standard Specification Div 1 Sec.3
Note: A minimum of 12 inches of vault cover is required.
- Vault excavation and backfill to conform to SPPC Specification SUB01X.
- Butyl rubber or neoprene gasket seal required between vault sections and/or extensions.
- Extensions and risers will be installed on all vaults.
- Unistrut (See detail A) or 1/2" inserts will be cast into vault.
- Lids to be marked "SPPC Electric"
- All weights to be clearly marked
- 16-15" steps are supplied with vault.
- Grounding: See expanded view for grounding applications and inserts.
- 2/0 CU (# 17-0910) grounding grid is required in this vault.
- Ladder and ladder-up required, See SPPC Construction Standard VB0105U.
- Middle section is optional.
- Delivery of this vault requires coordination with Jensen Precast.



INSIDE EXPANDED SIDE & END WALL
RACK APPLICATIONS WITH ARMS

MAXIMUM CONDUCTORS AND J-BARS					
VAULT 814	200 AMP PRIMARY	600 AMP PRIMARY	SECONDARY	EQUIPMENT	J BARS 3, 4 OR 5 WAY
	33 18	0 15	4 SET ≤ 750 QX OR TX	1 ≤ 225 KVA 1-6 POS SWITCH	3 TOTAL CHECK WITH OPERATIONS
NOTE: REFER TO CAB09U VOLUME 5 FOR COMPLETE APPLICATION					



ENGINEERING & CONSTRUCTION STANDARD

SHEET 29 OF 46

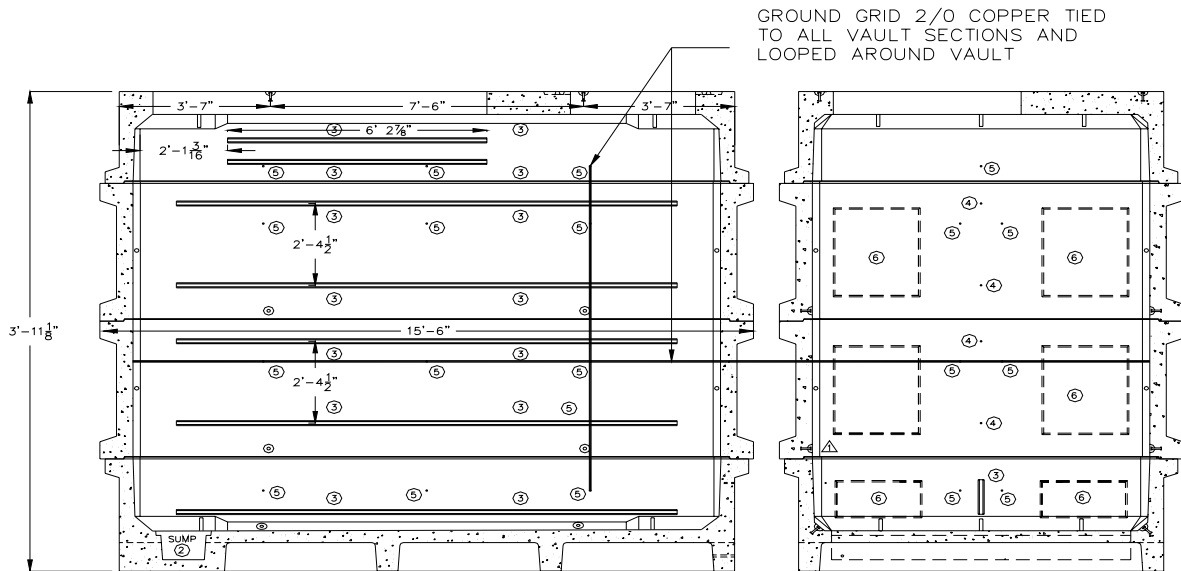
**814 VAULT
CONCRETE PRIMARY
8' X 14' X 12' I.D.**

VOLUME 17

DRAWING NUMBER
VB0090U

DRAWN	DESIGN	SUPR	DATE	REV
JVV	MB	DA	10/07	4

GROUNDING GRID INSTALLATION DETAILS

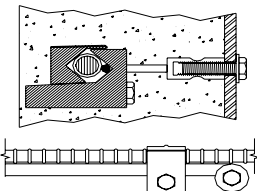


INSIDE EXPANDED SIDE & END WALL
GROUNDING APPLICATIONS AND INSERTS

MATERIAL LIST *supplied by Vault Manufacturer*

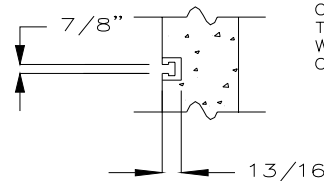
INSIDE VAULT HEIGHT		8'	12'
DESCRIPTION		QTY	QTY
1.	PULLING IRON 2 per corner	8	8
2.	12" X 84" SUMP W/grate 2 sections	1	1
3.	6' 2-1/2" UNISTRUT top section side walls	4	4
	12' LONG UNISTRUT other sections side walls	8	12
	12' LONG UNISTRUT bottom end section	2	2
4.	1/2" RACKING INSERT	8	12
5.	1/2" GROUNDING INSERT, 28/40 inside 6/8 outside	34	48
6.	12" X 24" KNOCKOUT	4	4
	24" X 30" KNOCKOUT	4	8
7.	12 HOLE RACK (17 3/4" LONG) base	8	8
	28 HOLE RACK (41 3/4" LONG) extension	8	16
9.	SPRING NUT	28	40
10.	1/2 X 1 1/2" BOLT	37	49
11.	1/2" WASHER	36	48
12.	1/2" BRASS GROUND WASHER, 1 top outside	1	1
13.	15" ARM	16	16
14.	LADDER UP	1	1
15.	LADDER size options on sheet one	1	1

EQUIPMENT INSTALLATION GROUNDING GRID:
INSTALL 54' OF 2/0 COPPER GROUND GRID. TIE
TO ALL SECTIONS AND LOOP THROUGH 12
GROUNDING LUGS ATTACHED TO 1/2" GROUND-
ING INSERTS AROUND VAULT AND BUS TO
TRANSFORMER, SWITCH, CONCENTRIC NEUTAL,
J-BAR OR BRACKET.



COPPER PIGTAIL TO BE SECURED
TIGHTLY TO REINFORCING BAR
WITH CLAMP BEFORE POURING
CONCRETE.

GROUND INSERT
DETAIL "B"



UNISTRUT
DETAIL "A"

Sierra Pacific
POWER COMPANY

ENGINEERING & CONSTRUCTION STANDARD

SHEET 30 OF 46

814 VAULT
CONCRETE PRIMARY
8' X 14' X 12' I.D.

VOLUME 17

DRAWN	DESIGN	SUPR	DATE	REV
JVV	MB	DA	10/07	4

DRAWING NUMBER
VB0090U