

# Equipment Pads

## DESIGN REQUIREMENTS

**TOLERANCES:**

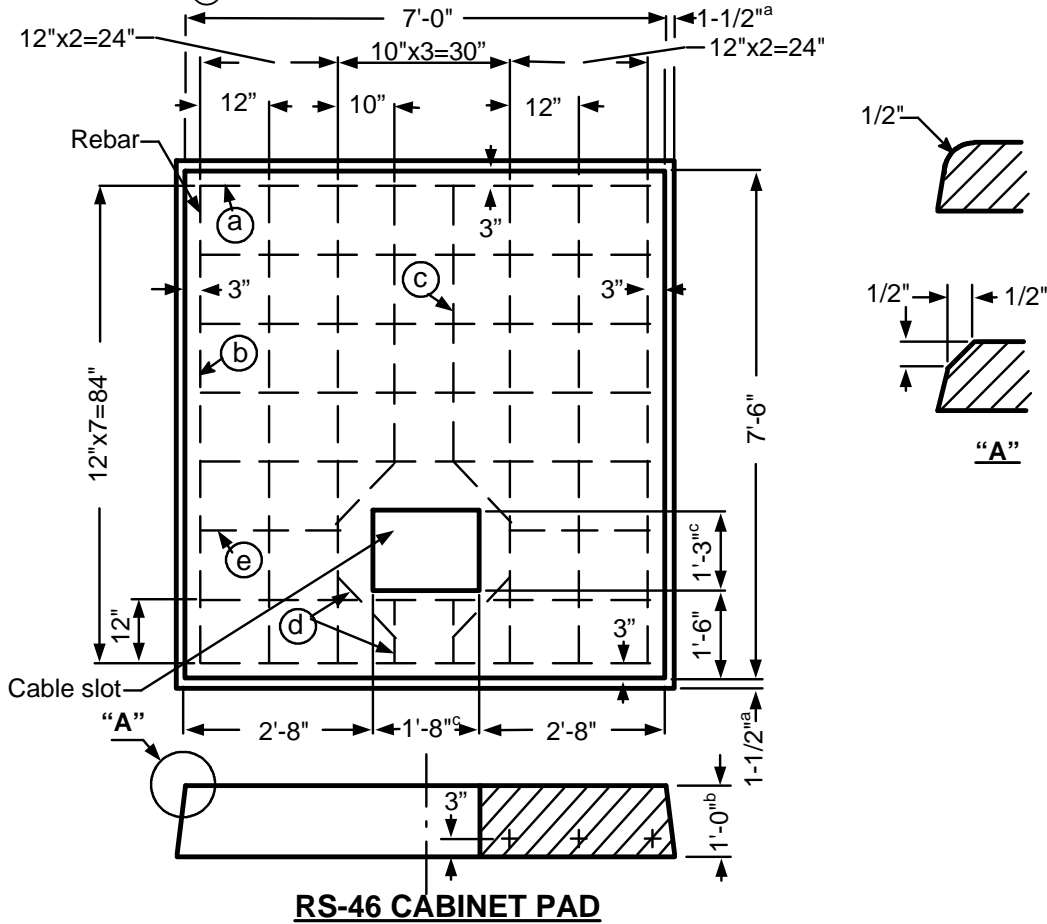
a = +0", -1-1/2"  
 b = +1/4", -0"  
 c = +1/2", -0"

**REBAR SCHEDULE:**

(a) = 7 ea. 78"  
 (b) = 6 ea. 84"  
 (c) = 2 ea. 48"  
 (d) = 6 ea. 12"  
 (e) = 2 ea. 24"

**APPROVED PADS**

MANUFACTURER	PAD
Jensen Precast	J-RS-46
Rockway Precast	R-RS-46

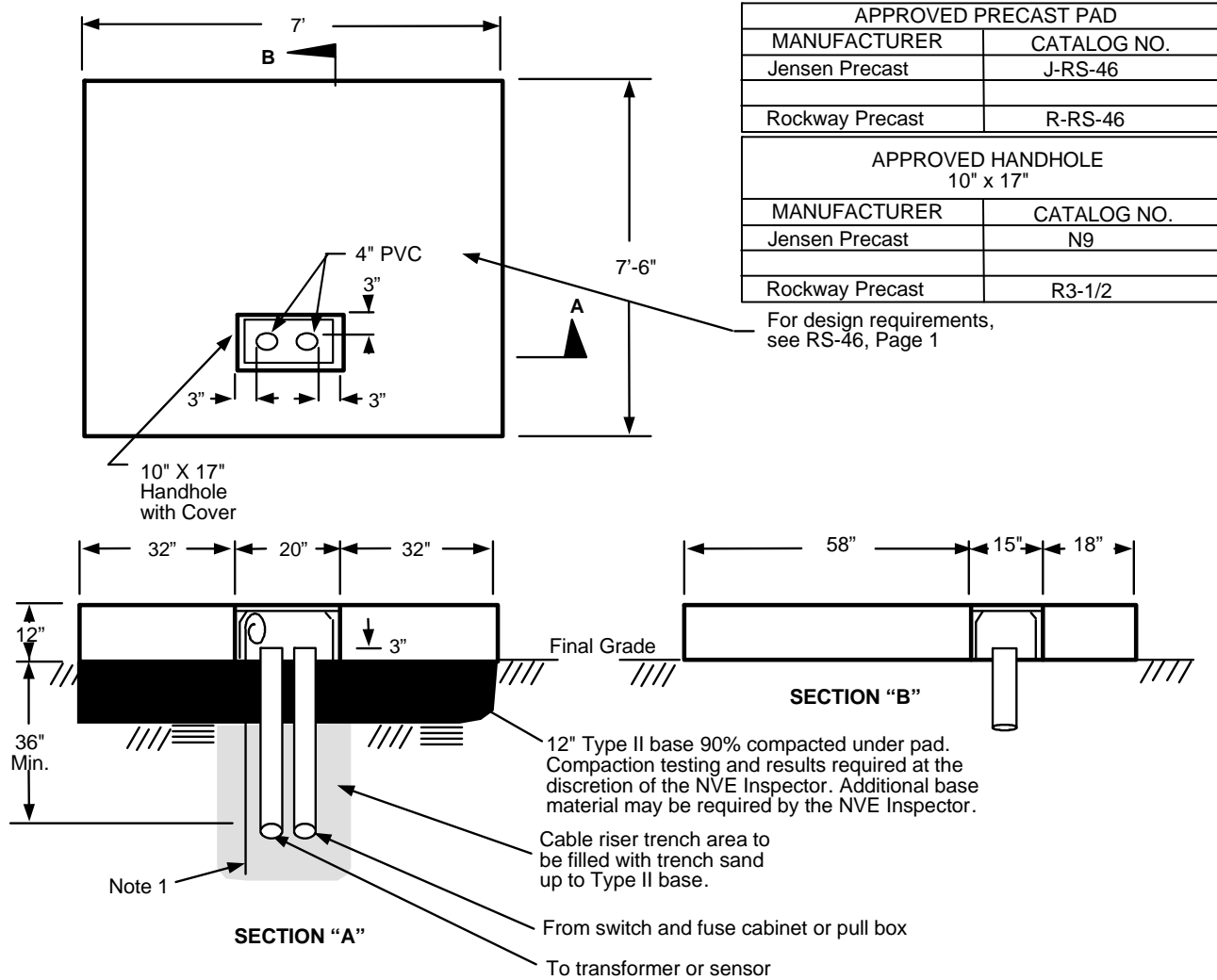


1. Rebar
  - A. Minimum #4
  - B. Placed into the above drawing according to the rebar schedule.
2. Pad
  - A. A 15"x20" cable slot.
  - B. Shall meet RS-G2 and RS-G3.

				Electric Service Requirements		<b>RS-46</b>
				<b>Cabinet Pad (15 &amp; 25kV):                  Fuse/Meter and 12kV Capacitor Bank Pad</b>		
Drawn:	Eng:	Appr:	Date:			Revision: 1
DH	DH	DA	10/06			Page 1 of 2


# Equipment Pads

## INSTALLATION REQUIREMENTS



### NOTES:

- Grounding by customer shall be 2-50' #2 stranded bare copper ground wires laid in the bottom of the conduit trench in opposite directions with 2-5' tails in the pad opening.  
**NOTE:** Only at the discretion of NVE's inspectors, a 1/2" x 8' copper ground rod can be installed.
- For location and clearances to other structures, see: RS-5.
- Retaining wall required when grade from bottom of pad rises or lowers more than 1' in 5' horizontally.
- All secondary conduits shall be located within 24" of the right side of the pad opening.
- The top of the pad shall be leveled and must clear the final grade by 12".

				Electric Service Requirements		<b>RS-46</b>
				<b>Cabinet Pad (15 &amp; 25kV): Fuse/Meter and 12kV Capacitor Bank Pad</b>		
Drawn:	Eng:	Appr:	Date:			Revision: 1
DH	DH	DA	10/06			Page 2 of 2