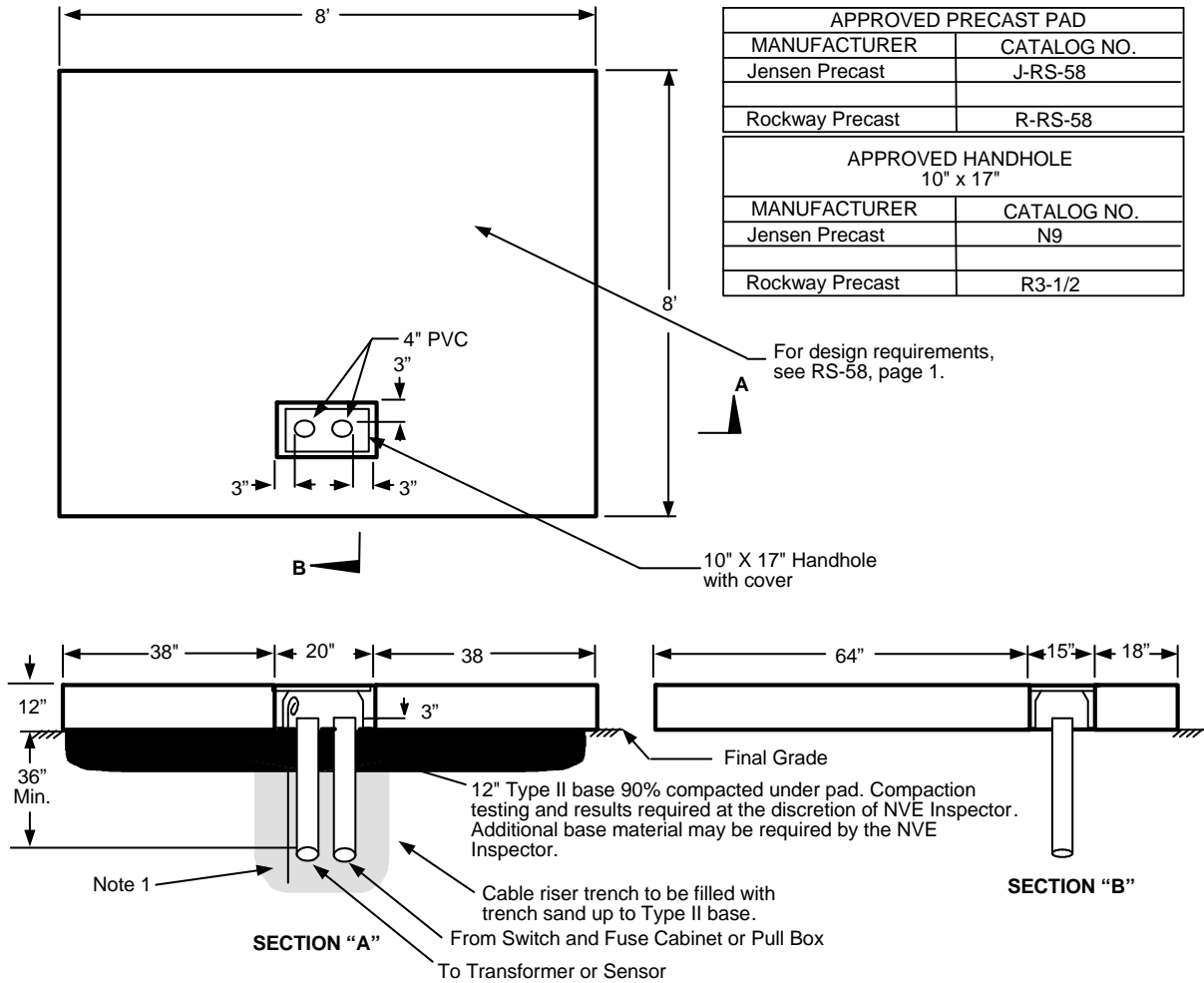



Equipment Pads

INSTALLATION REQUIREMENTS



NOTES:

- Grounding by customer shall be 2-50' #2 stranded bare copper ground wires in the bottom of the conduit trench in opposite directions with 2-5' tails in the pad opening.
NOTE: Only at the discretion of NVE's inspectors, a 1/2"x8' copper ground can be installed.
- For location and clearances to other structures, see RS-5.
- Retaining wall required when grade from bottom of pad rises or lowers more than 1' in 5' horizontally
- All secondary conduits shall be located within 24" of the right side of the pad.
- The top of the pad shall be leveled and must clear the final grade by 12".

				Electric Service Requirements		RS-58
				Cabinet Pad: Capacitor Bank, 25kV		
Drawn:	Eng:	Appr:	Date:			Revision: 1
DH	DH	DA	10/06			Page 2 of 2