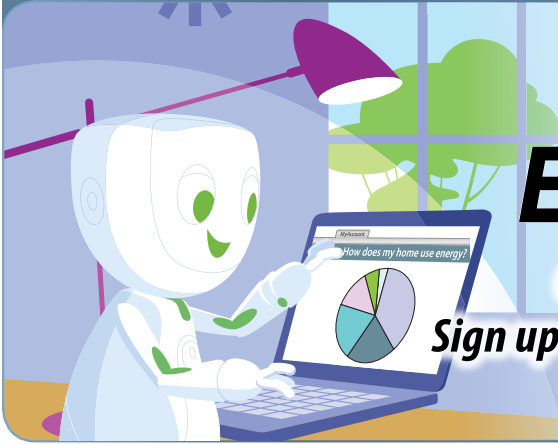




# Chart Your Energy Usage.

**Conduct an online energy audit.  
Sign up for MyAccount at [nvenergy.com](http://nvenergy.com)**

Connect with NV Energy   



## New Construction Plans

NV Energy wants to help you design and construct a more efficient building. The Sure Bet program provides information and incentives to customers to construct commercial buildings that exceed code requirements and save more energy. When you involve our program team early in the design process, you may qualify for higher incentives.

Contact Sure Bet for more information at  
**[nvenergy.com/surebet](http://nvenergy.com/surebet)**  
and start saving today.



## Retrofit Your Buildings



Is your refrigerated display case losing its cool? Are your parking garage lights blazing day and night? Does your HVAC equipment run endlessly? Before you invest in new equipment, visit the Sure Bet program. We can help identify energy-efficient options that will save you money. The program also offers incentives that can reduce your up-front project costs and make it even easier to invest in energy efficiency.

Learn more at  
**[nvenergy.com/surebet](http://nvenergy.com/surebet)**

## Investigate Ways to Save

Energy savings can be found throughout your home or your business. Find out how you can save money through an online energy audit.

Sign up for MyAccount at  
**[nvenergy.com](http://nvenergy.com)**



# NVENERGIZE

Creating an energy-smart future.

## Power Outages

Weather conditions, emergencies, automobile and power pole accidents can sometimes cause temporary power interruptions. If you lose your electrical power, we want to know. We'll work to get it back on as quickly as possible. To prevent delays in restoring your power, check to see if your neighbor still has lights on. Is the power off in just part of your house? Either can be a sign that the problem may be in your house. Before you call us, check to see if there is a blown fuse or a tripped circuit breaker.

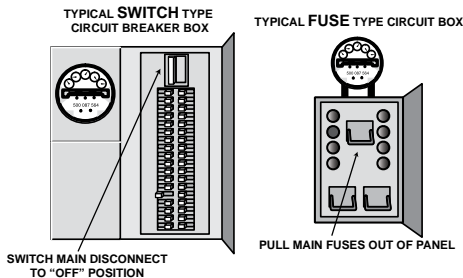
### To Report an Outage

To report an outage outside of the Reno and Carson City area, call (800) 962-0399; Reno and Carson City residents, call (775) 834-4100; and in southern Nevada, call (702) 402-2900.

## During an Emergency

### How To Shut Off Electricity

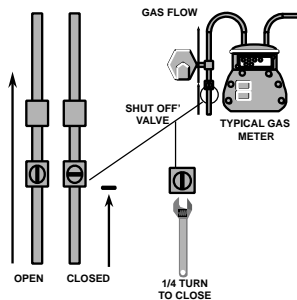
1. Normally, most electric main disconnects (breaker/fuses) are located with the meter on the exterior wall
2. Look closely at your circuit breaker box or fuse-type box.
3. Be certain that you can turn off the electricity in an emergency



### How To Shut Off Gas Supply

Do so ONLY if you notice structural damage to your house or if you smell or hear leaking gas.

1. The main shut-off valve is located next to your meter on the inlet pipe
2. Use a crescent or pipe wrench and give the valve a quarter turn in either direction. The pipe valve will now run crosswise on the pipe. The line is closed.



DO NOT turn on the gas again, let the gas company do this.

## New Building Code Law

The Nevada State Office of Energy would like you to learn more about the upcoming new law on building codes, the adoption of the 2009 International Energy Conservation Code (IECC). Please visit [www.energy.nv.gov](http://www.energy.nv.gov), click on Energy Efficiency and select Energy Related Codes.

## Budget Your Payment

NV Energy offers residential customers an Equal Payment Plan option. We'll take your average energy usage and divide it into equal monthly payments. You'll know in advance what your next bill will be each month.

Call Customer Service or visit [nvenergy.com/assistance](http://nvenergy.com/assistance) to learn more.

## More Questions

For more information visit:  
[nvenergy.com](http://nvenergy.com)

For Customer Service:  
**Northern Nevada**  
Call 775.834.4444  
or toll free 800.962.0399  
Para Español llame al  
775.834.4700

**Southern Nevada**  
Call 702.402.5555  
Para Español llame al  
702.402.5554

