

PADMOUNTED APPARATUS BARRIER POST RESIDENTIAL AND COMMERCIAL

1.0 INDEX

- 1.0 INDEX
- 2.0 PURPOSE
- 3.0 BARRIER POST GUIDELINES
- 4.0 BARRIER POST INSTALLATION
- 5.0 TRANSFORMER AND SWITCH PAD REQUIREMENTS

2.0 PURPOSE

This Standard provides information on the placement of barrier posts for the protection of pad mounted apparatus both in residential and commercial applications.

3.0 BARRIER POST GUIDELINES

- 3.1 If pad mounted apparatus is to be located in an area subject to vehicular traffic, suitable barrier posts are to be supplied and installed by the customer in accordance with this Standard.
- 3.2 Apparatus located in an area which will not ultimately be subject to vehicular traffic, but is in the path of construction equipment, requires temporary barriers complying with these Standards. **Temporary barriers must be provided by the customer until the hazard of the apparatus being struck no longer exists.**

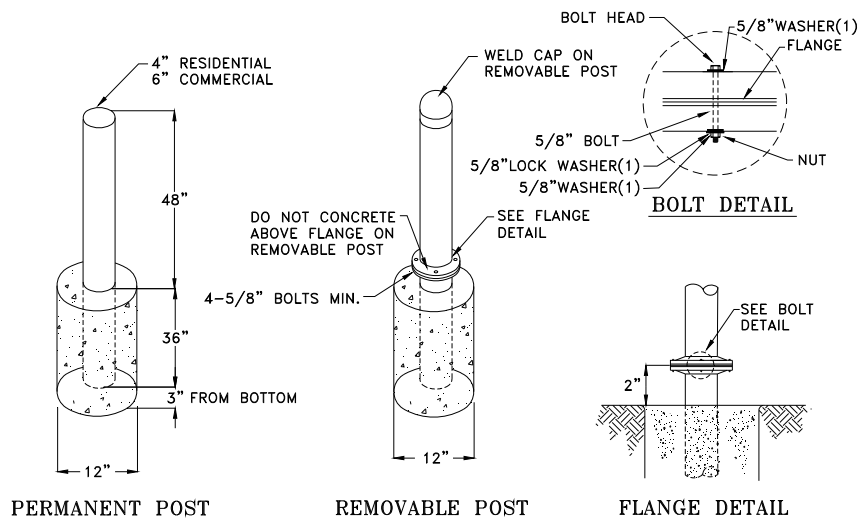
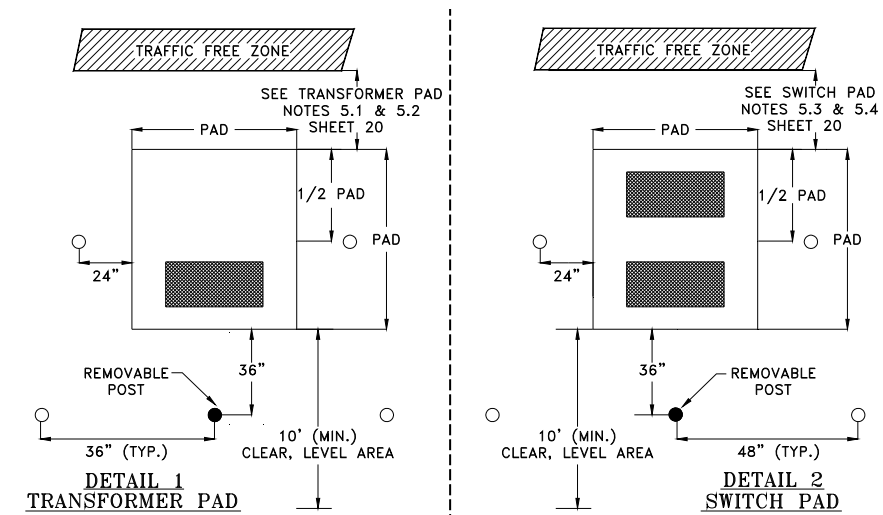
4.0 BARRIER POST INSTALLATION

- 4.1 Barrier posts will be installed a minimum of 24" away from the side of the transformer and switch pads; see Details 1 & 2, Sheet 20.
- 4.2 Barrier posts will be installed 36" away from the front and back of switch pads, see Detail 2.
- 4.3 Residential area posts will be a minimum 4" OD steel pipe (well casing), primed and painted yellow. NVE Stock #95-0931 (permanent), #95-0932 (removable).
- 4.4 Commercial area posts will be minimum 6" OD steel pipe (well casing), primed and painted yellow. NVE Stock #95-0930 (permanent), #95-0929 (removable).

				VOLUME 17 – ENGINEERING & CONSTRUCTION STANDARD		PE0009U
				PADMOUNTED APPARATUS BARRIER POST – RESIDENTIAL & COMMERCIAL		
Drawn:	Eng:	Appr:	Date:	Revision: 3		Page 1 of 2
JL	JF	SJ	5/04			

5.0 TRANSFORMER & SWITCH PAD REQUIREMENTS

- 5.1 If traffic free zone is a building, fence, or electrical panel, the back or side of the transformer pad shall maintain a minimum 3'-0" clearance for transformers 1000 kva or less and a 3'-6" clearance for transformers greater than 1000 kva.
- 5.2 If front of transformer pad faces a building, fence, or electrical panel, a 10'-0" clear and level area must be maintained for the safe operation of the equipment.
- 5.3 If traffic free zone is a building, fence, or electrical panel, the side of the switch pad shall maintain a minimum 3'-0" clearance.
- 5.4 If front/back of switch pad faces a building, fence, or electrical panel, a 10'-0" clear and level area must be maintained for the safe operation of the equipment.



				VOLUME 17 – ENGINEERING & CONSTRUCTION STANDARD		PE0009U
				PADMOUNTED APPARATUS BARRIER POST – RESIDENTIAL & COMMERCIAL		
Drawn:	Eng:	Appr:	Date:			Revision: 3
JL	JF	SJ	5/04			Page 2 of 2