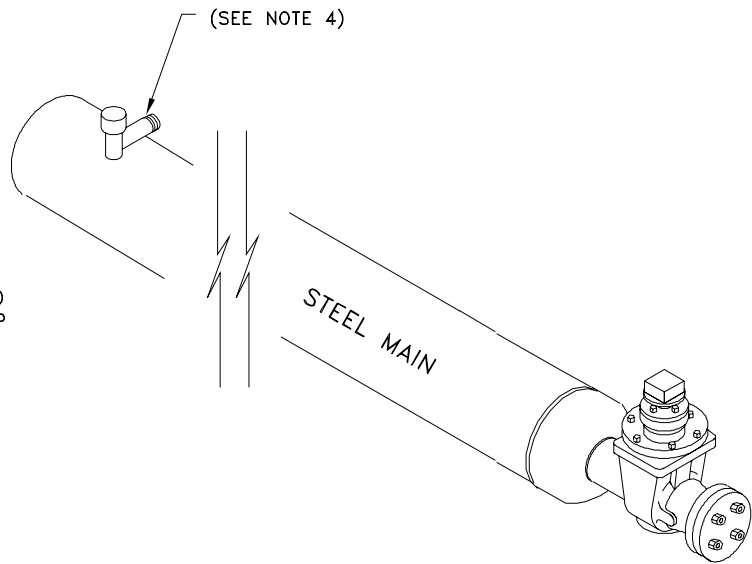


NOTES:

- 1) COAT ALL STEEL PIPE WITH PRIMER, PROTECTO-WRAP AND TAPE. COAT VALVE WITH MASTIC, EXCEPT FOR VALVE STEM.
- 2) PURGE STACK MUST BE USED TO PURGE ABOVE WORKER'S HEAD. STACK AND RISER MUST BE PROPERLY GROUNDED. DO NOT PURGE INTO BELL HOLE.
- 3) AFTER PURGING IS COMPLETE, 2" VALVE AND BLIND FLANGE SHOULD BE SOAP TESTED UNDER OPERATING PRESSURE, THEN LEFT IN THE CLOSED POSITION.
- 4) 3/4" SERVICE TEE TO BE UTILIZED FOR ODORANT INJECTION NEAR THE TIE-IN END OF THE PROJECT. RETIRE WITH 3/4" CAP FIPT BLACK IRON. SOAP TEST UNDER OPERATING PRESSURE, THEN LEAVE THE SERVICE TEE IN THE CLOSED POSITION.



MATERIAL LIST

STOCK #	QTY.	DESCRIPTION
45-0190	1.0	CAP PIPE 8-5/8" O.D. WELDING
45-2198	1.0	TEE SERVICE FOR 3/4" WELD X 3/4' THREAD FOR PURGING
45-0140	1.0	CAP 3/4" FIPT BLACK IRON
43-0127	1.0	VALVE 2" WELD X FLANGE
45-0950	1.0	FLANGE BLIND 2"
47-0040	1.0	GASKET FULL FACE 2 IN.
47-0340	4.0	BOLT MACHINE BLK HEX HEAD W/HEX NUT 5/8" X 2-1/2"
47-0260	1.0	TAPE PROTECTO-WRAP 6 IN. X 50 FT.
47-0300	1.0	TAPE BLACK 2 IN. X 100 FT.
47-0182	0.5	MASTIC
47-0180	0.5	PRIMER

Sierra Pacific
POWER COMPANY



ENGINEERING & CONSTRUCTION STANDARD

SECTION 5 GAS CONSTRUCTION DRAWINGS
DISTRIBUTION CAP INSTALLATIONS
8" CAP STEEL WITH 2" PURGE VALVE
FOR ODORANT INJECTION

SHEET 10 OF 13

DRAWING NUMBER

DCI09G

DRAWN	DESIGN	SUPR	DATE	REV
GD	KS	HB	5/98	7/06