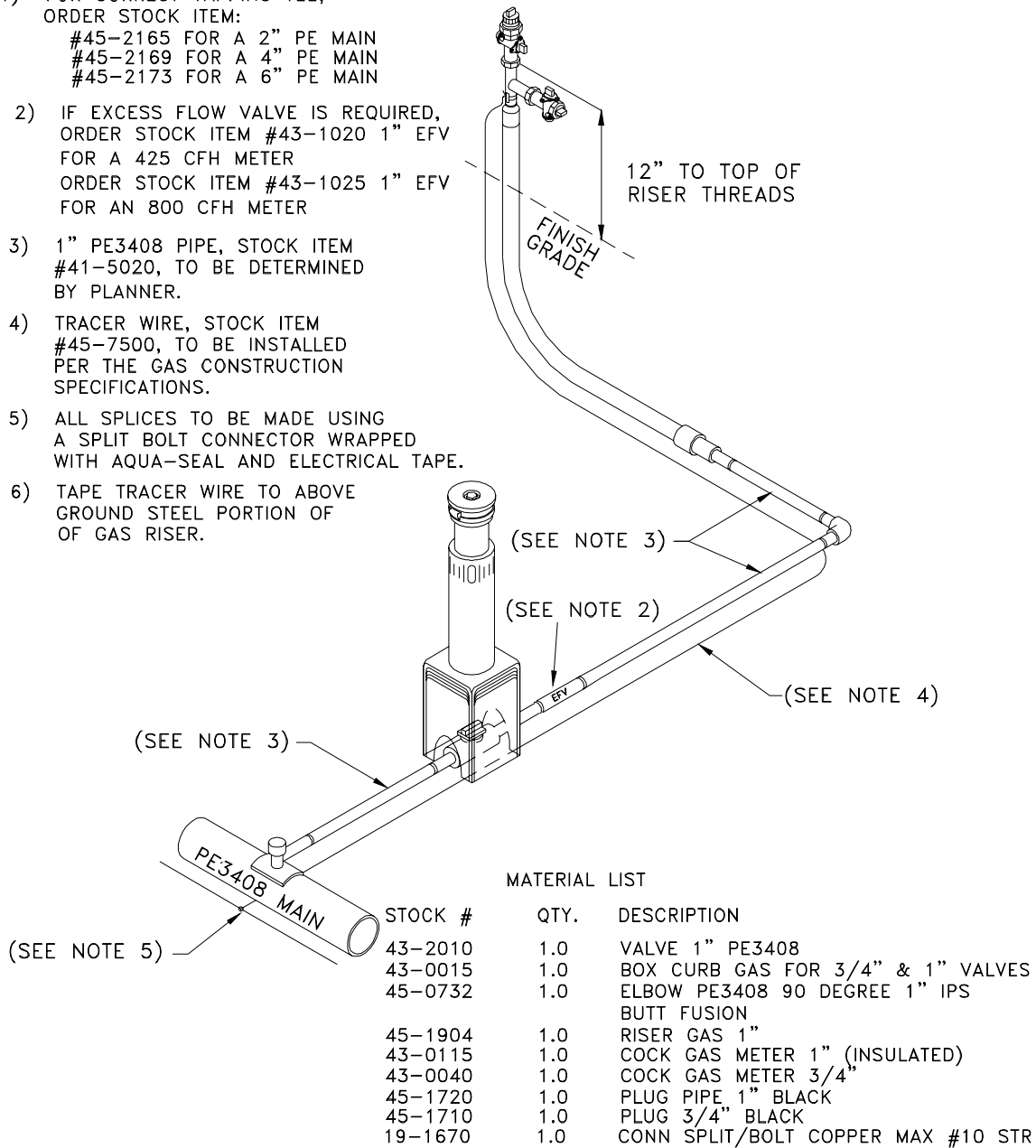


NOTES:

- 1) FOR CORRECT TAPPING TEE, ORDER STOCK ITEM:  
 #45-2165 FOR A 2" PE MAIN  
 #45-2169 FOR A 4" PE MAIN  
 #45-2173 FOR A 6" PE MAIN
- 2) IF EXCESS FLOW VALVE IS REQUIRED, ORDER STOCK ITEM #43-1020 1" EFV FOR A 425 CFH METER  
 ORDER STOCK ITEM #43-1025 1" EFV FOR AN 800 CFH METER
- 3) 1" PE3408 PIPE, STOCK ITEM #41-5020, TO BE DETERMINED BY PLANNER.
- 4) TRACER WIRE, STOCK ITEM #45-7500, TO BE INSTALLED PER THE GAS CONSTRUCTION SPECIFICATIONS.
- 5) ALL SPLICES TO BE MADE USING A SPLIT BOLT CONNECTOR WRAPPED WITH AQUA-SEAL AND ELECTRICAL TAPE.
- 6) TAPE TRACER WIRE TO ABOVE GROUND STEEL PORTION OF OF GAS RISER.



MATERIAL LIST

STOCK #	QTY.	DESCRIPTION
43-2010	1.0	VALVE 1" PE3408
43-0015	1.0	BOX CURB GAS FOR 3/4" & 1" VALVES
45-0732	1.0	ELBOW PE3408 90 DEGREE 1" IPS BUTT FUSION
45-1904	1.0	RISER GAS 1"
43-0115	1.0	COCK GAS METER 1" (INSULATED)
43-0040	1.0	COCK GAS METER 3/4"
45-1720	1.0	PLUG PIPE 1" BLACK
45-1710	1.0	PLUG 3/4" BLACK
19-1670	1.0	CONN SPLIT/BOLT COPPER MAX #10 STR



ENGINEERING & CONSTRUCTION STANDARD  
 SECTION 5 GAS CONSTRUCTION DRAWINGS  
 SERVICE TAP INSTALLATIONS  
 1" PE COMPLETE SINGLE SERVICE  
 OFF PE MAIN

SHEET 9 OF 33  
 DRAWING NUMBER  
**STI06G**

DRAWN	DESIGN	SUPR	DATE	REV
KS	KS	HB	5/98	7/06