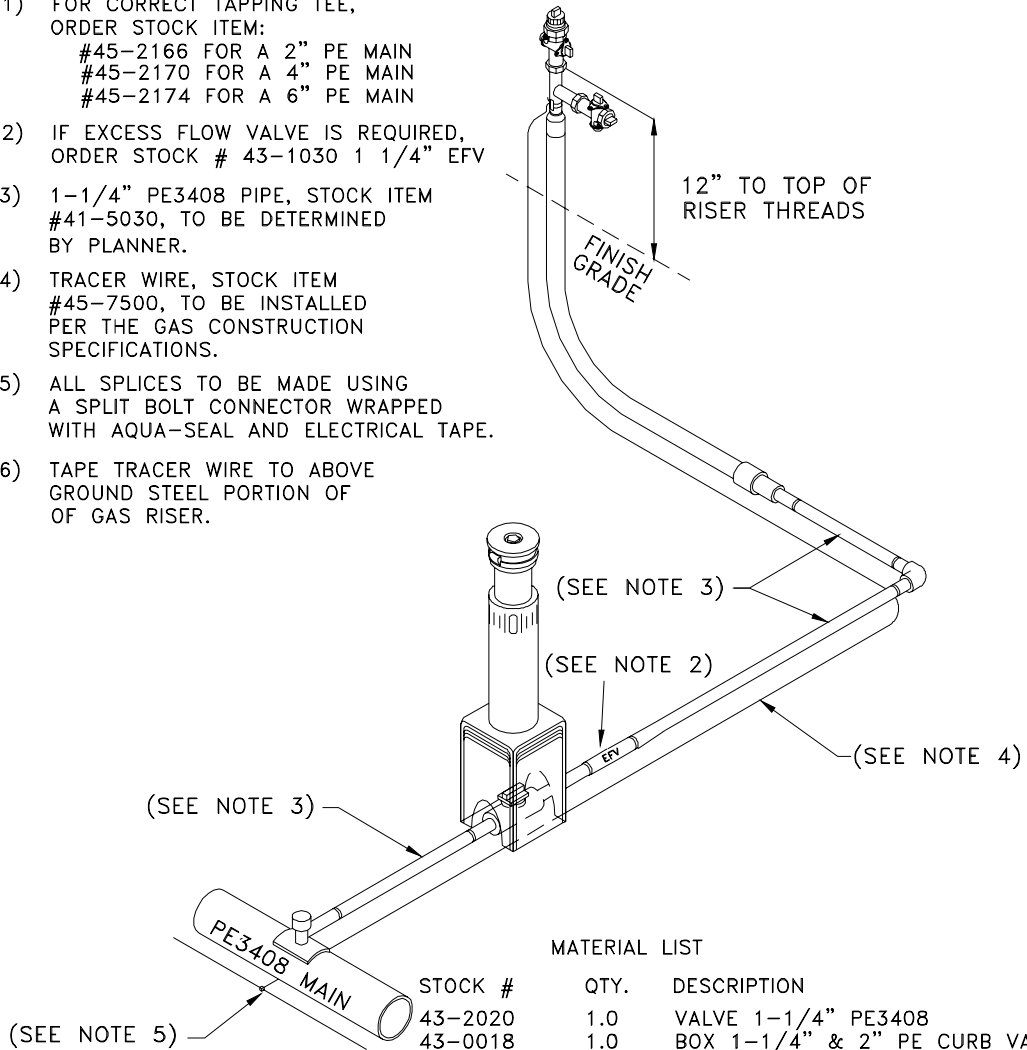


NOTES:

- 1) FOR CORRECT TAPPING TEE, ORDER STOCK ITEM:  
 #45-2166 FOR A 2" PE MAIN  
 #45-2170 FOR A 4" PE MAIN  
 #45-2174 FOR A 6" PE MAIN
- 2) IF EXCESS FLOW VALVE IS REQUIRED, ORDER STOCK # 43-1030 1 1/4" EFV
- 3) 1-1/4" PE3408 PIPE, STOCK ITEM #41-5030, TO BE DETERMINED BY PLANNER.
- 4) TRACER WIRE, STOCK ITEM #45-7500, TO BE INSTALLED PER THE GAS CONSTRUCTION SPECIFICATIONS.
- 5) ALL SPLICES TO BE MADE USING A SPLIT BOLT CONNECTOR WRAPPED WITH AQUA-SEAL AND ELECTRICAL TAPE.
- 6) TAPE TRACER WIRE TO ABOVE GROUND STEEL PORTION OF OF GAS RISER.



MATERIAL LIST

STOCK #	QTY.	DESCRIPTION
43-2020	1.0	VALVE 1-1/4" PE3408
43-0018	1.0	BOX 1-1/4" & 2" PE CURB VALVES TRAFFIC RATED H-20
45-0735	1.0	ELBOW PE3408 90 DEGREE 1-1/4" IPS BUTT FUSION
45-1907	1.0	RISER GAS 1-1/4"
43-0116	1.0	COCK GAS METER 1-1/4" (INSULATED)
43-0050	1.0	COCK GAS METER 1"
45-1730	1.0	PLUG PIPE 1-1/4" BLACK
45-1720	1.0	PLUG 1" BLACK
19-1670	1.0	CONN SPLIT/BOLT COPPER MAX #10 STR



ENGINEERING & CONSTRUCTION STANDARD  
 SECTION 5 GAS CONSTRUCTION DRAWINGS  
 SERVICE TAP INSTALLATIONS  
 1 1/4" PE COMPLETE SINGLE SERVICE  
 OFF PE MAIN

SHEET 10 OF 33

DRAWING NUMBER  
**STI07G**

DRAWN	DESIGN	SUPR	DATE	REV
KS	KS	HB	5/98	7/06