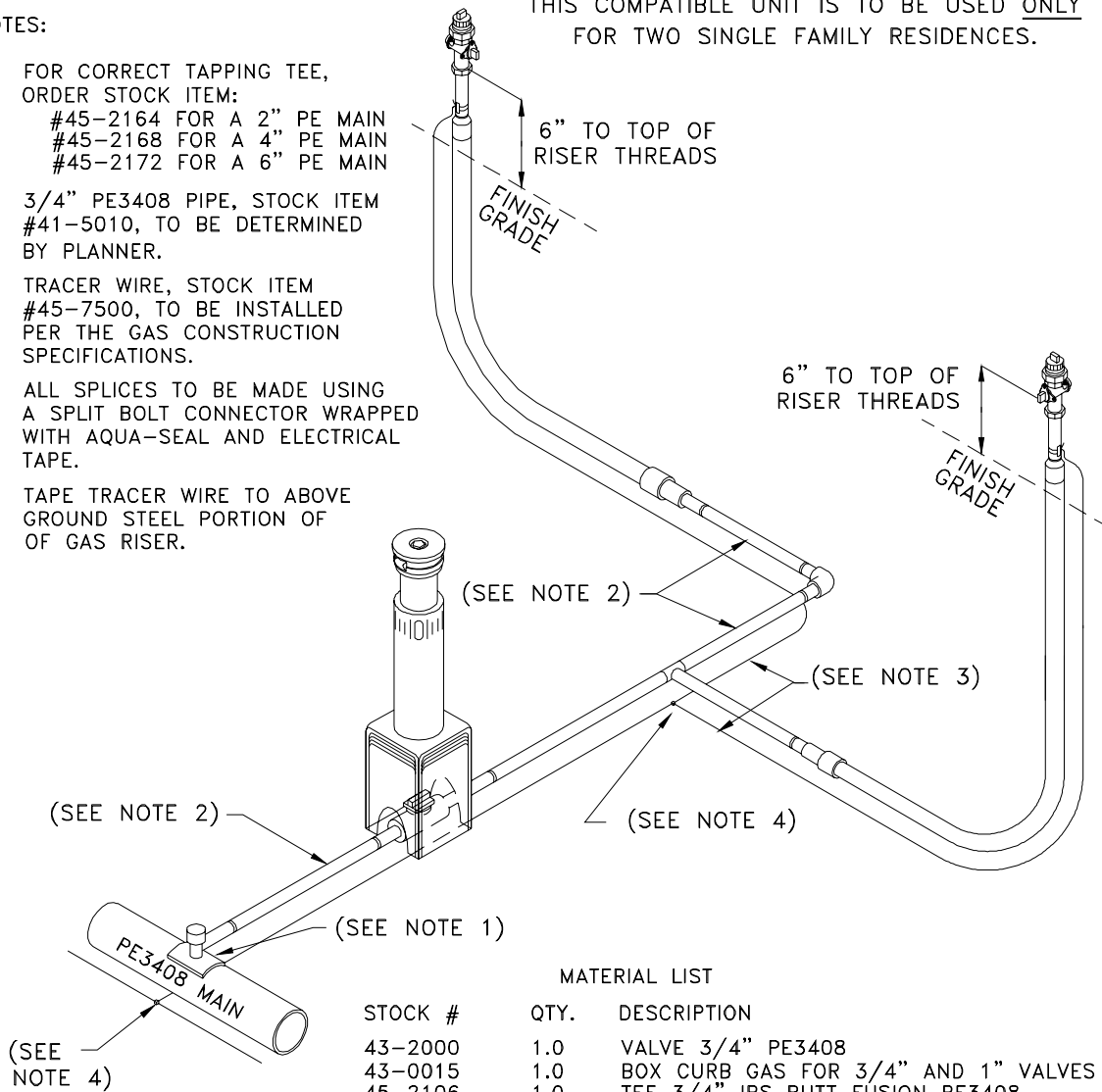


NOTES:

- 1) FOR CORRECT TAPPING TEE, ORDER STOCK ITEM:  
 #45-2164 FOR A 2" PE MAIN  
 #45-2168 FOR A 4" PE MAIN  
 #45-2172 FOR A 6" PE MAIN
- 2) 3/4" PE3408 PIPE, STOCK ITEM #41-5010, TO BE DETERMINED BY PLANNER.
- 3) TRACER WIRE, STOCK ITEM #45-7500, TO BE INSTALLED PER THE GAS CONSTRUCTION SPECIFICATIONS.
- 4) ALL SPLICES TO BE MADE USING A SPLIT BOLT CONNECTOR WRAPPED WITH AQUA-SEAL AND ELECTRICAL TAPE.
- 5) TAPE TRACER WIRE TO ABOVE GROUND STEEL PORTION OF GAS RISER.

THIS COMPATIBLE UNIT IS TO BE USED ONLY FOR TWO SINGLE FAMILY RESIDENCES.



MATERIAL LIST

STOCK #	QTY.	DESCRIPTION
43-2000	1.0	VALVE 3/4" PE3408
43-0015	1.0	BOX CURB GAS FOR 3/4" AND 1" VALVES
45-2106	1.0	TEE 3/4" IPS BUTT FUSION PE3408
45-0726	1.0	ELBOW PE3408 90 DEGREE 3/4" IPS BUTT FUSION
45-1899	2.0	RISER GAS 3/4"
43-0110	2.0	COCK GAS METER 3/4" (INSULATED)
45-1710	2.0	PLUG PIPE 3/4" BLACK
19-1670	2.0	CONN SPLIT/BOLT COPPER MAX #10 STR



ENGINEERING & CONSTRUCTION STANDARD

SECTION 5 GAS CONSTRUCTION DRAWINGS  
 SERVICE TAP INSTALLATIONS  
 3/4" PE COMPLETE BRANCH SERVICE  
 OFF PE MAIN

SHEET 11 OF 33

DRAWING NUMBER

**ST108G**

DRAWN	DESIGN	SUPR	DATE	REV
KS	KS	HB	5/98	7/06