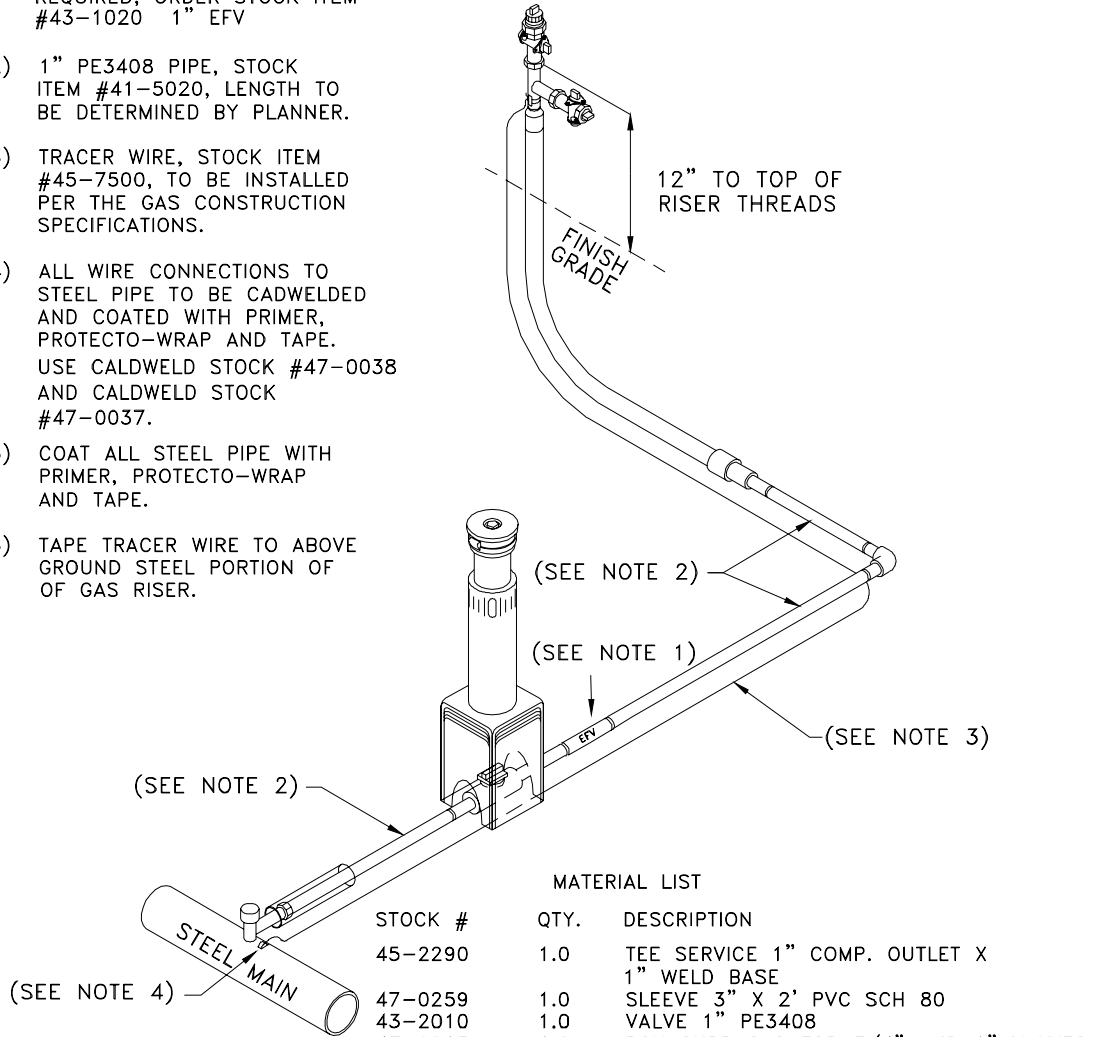


NOTES:

- 1) IF EXCESS FLOW VALVE IS REQUIRED, ORDER STOCK ITEM #43-1020 1" EFV
- 2) 1" PE3408 PIPE, STOCK ITEM #41-5020, LENGTH TO BE DETERMINED BY PLANNER.
- 3) TRACER WIRE, STOCK ITEM #45-7500, TO BE INSTALLED PER THE GAS CONSTRUCTION SPECIFICATIONS.
- 4) ALL WIRE CONNECTIONS TO STEEL PIPE TO BE CADWELDED AND COATED WITH PRIMER, PROTECTO-WRAP AND TAPE. USE CALDWELD STOCK #47-0038 AND CALDWELD STOCK #47-0037.
- 5) COAT ALL STEEL PIPE WITH PRIMER, PROTECTO-WRAP AND TAPE.
- 6) TAPE TRACER WIRE TO ABOVE GROUND STEEL PORTION OF OF GAS RISER.



MATERIAL LIST

STOCK #	QTY.	DESCRIPTION
45-2290	1.0	TEE SERVICE 1" COMP. OUTLET X 1" WELD BASE
47-0259	1.0	SLEEVE 3" X 2' PVC SCH 80
43-2010	1.0	VALVE 1" PE3408
43-0015	1.0	BOX CURB GAS FOR 3/4" AND 1" VALVES
45-0732	1.0	ELBOW PE3408 90 DEGREE 1" IPS BUTT FUSION
45-1904	1.0	RISER GAS 1"
43-0115	1.0	COCK GAS METER 1" (INSULATED)
43-0040	1.0	COCK GAS METER 3/4"
45-1720	1.0	PLUG PIPE 1" BLACK
45-1710	1.0	PLUG PIPE 3/4" BLACK