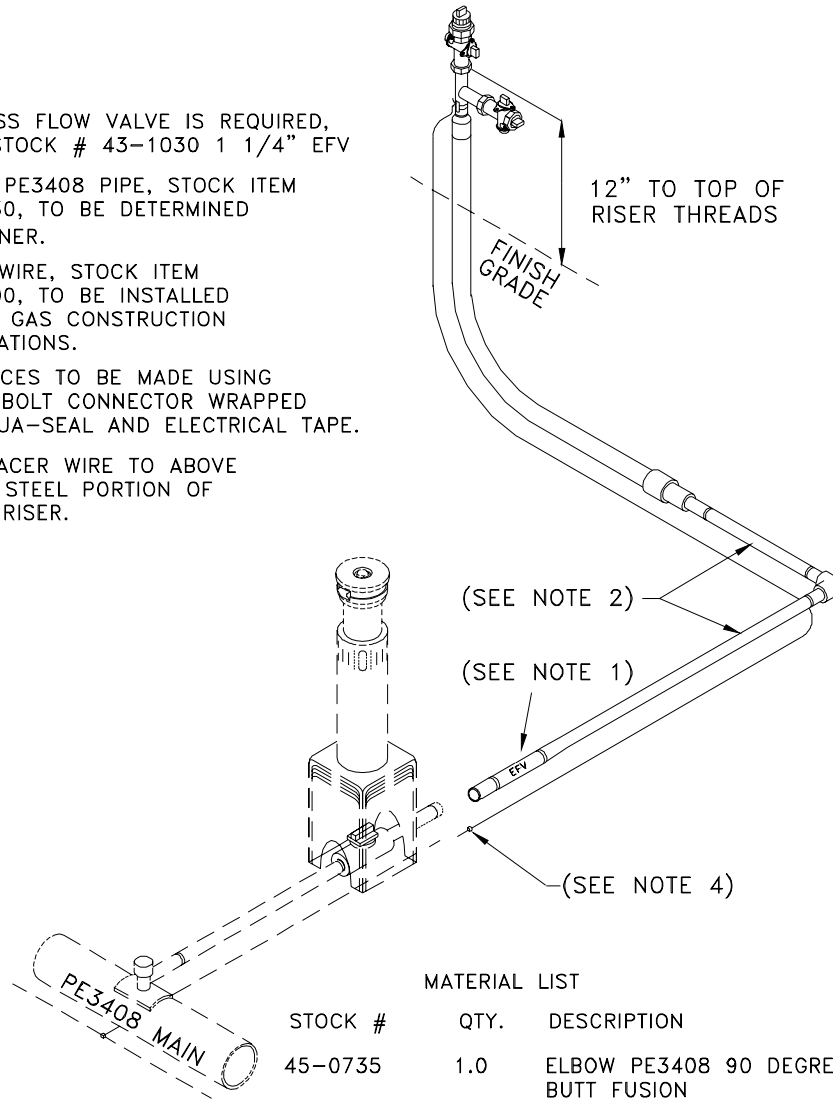


NOTES:

- 1) IF EXCESS FLOW VALVE IS REQUIRED, ORDER STOCK # 43-1030 1 1/4" EFV
- 2) 1-1/4" PE3408 PIPE, STOCK ITEM #41-5030, TO BE DETERMINED BY PLANNER.
- 3) TRACER WIRE, STOCK ITEM #45-7500, TO BE INSTALLED PER THE GAS CONSTRUCTION SPECIFICATIONS.
- 4) ALL SPLICES TO BE MADE USING A SPLIT BOLT CONNECTOR WRAPPED WITH AQUA-SEAL AND ELECTRICAL TAPE.
- 5) TAPE TRACER WIRE TO ABOVE GROUND STEEL PORTION OF OF GAS RISER.



MATERIAL LIST

STOCK #	QTY.	DESCRIPTION
45-0735	1.0	ELBOW PE3408 90 DEGREE 1-1/4" IPS BUTT FUSION
45-1907	1.0	RISER GAS 1-1/4"
43-0116	1.0	COCK GAS METER 1-1/4" (INSULATED)
43-0050	1.0	COCK GAS METER 1"
45-1730	1.0	PLUG PIPE 1-1/4" BLACK
45-1720	1.0	PLUG 1" BLACK
19-1670	1.0	CONN SPLIT/BOLT COPPER MAX #10 STR

DRAWN	DESIGN	SUPR	DATE	REV
KS	KS	HB	5/98	7/06