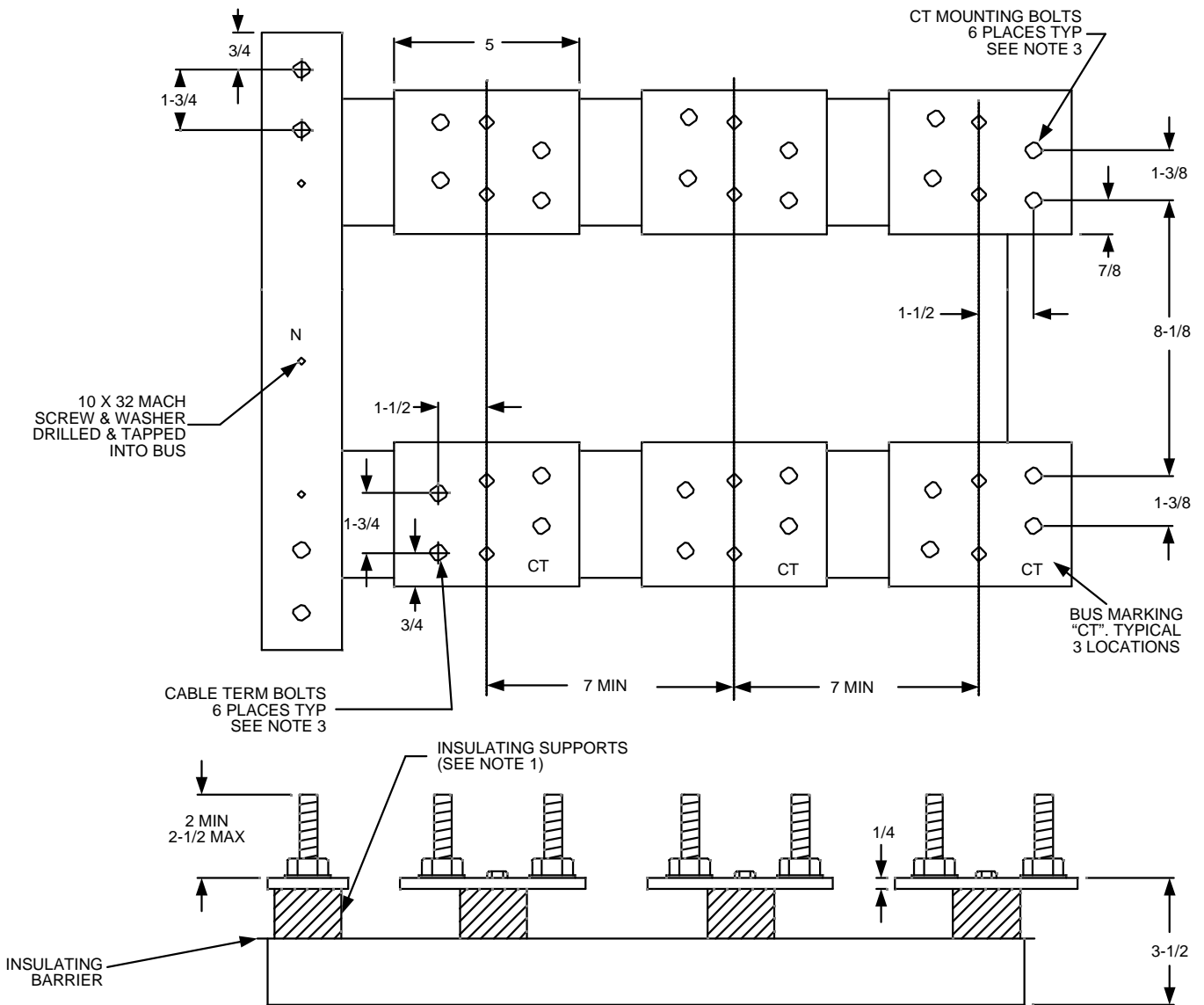



Metering Equipment: Material Requirements



All Dimensions Shown are in Inches

NOTES:

1. Insulated supports shall be rated for the serving voltage and have sufficient mechanical strength for the application.
2. An insulated, bondable bus shall be provided for terminating a neutral conductor.
3. Two 1/2" steel bolts shall be provided for each cable terminating position and each bolt shall be furnished with a spring washer and a nut. The spring washer may be either cone-type (Belleville) or a split-ring washer and a flat washer. Bolts shall be secured in place and spaced as shown. All parts shall be plated to prevent corrosion.
4. For applications, see RPM-13, RPM-14, and RPM-16.

				Electric Service Requirements		RPM-29A
				Current Transformer Mounting Base 3Ø, 4 Wire, 800 Amps Maximum		
Drawn:	Eng:	Appr:	Date:	Revision: 1		Page 1 of 2
DH	DH	DA	1106			

Metering Equipment: Material Requirements

THIS PAGE INTENTIONALLY LEFT BLANK

				Electric Service Requirements		RPM-29A
				Current Transformer Mounting Base 3Ø, 4 Wire, 800 Amps Maximum		
Drawn:	Eng:	Appr:	Date:			Revision: 1
DH	DH	DA	1106			Page 2 of 2