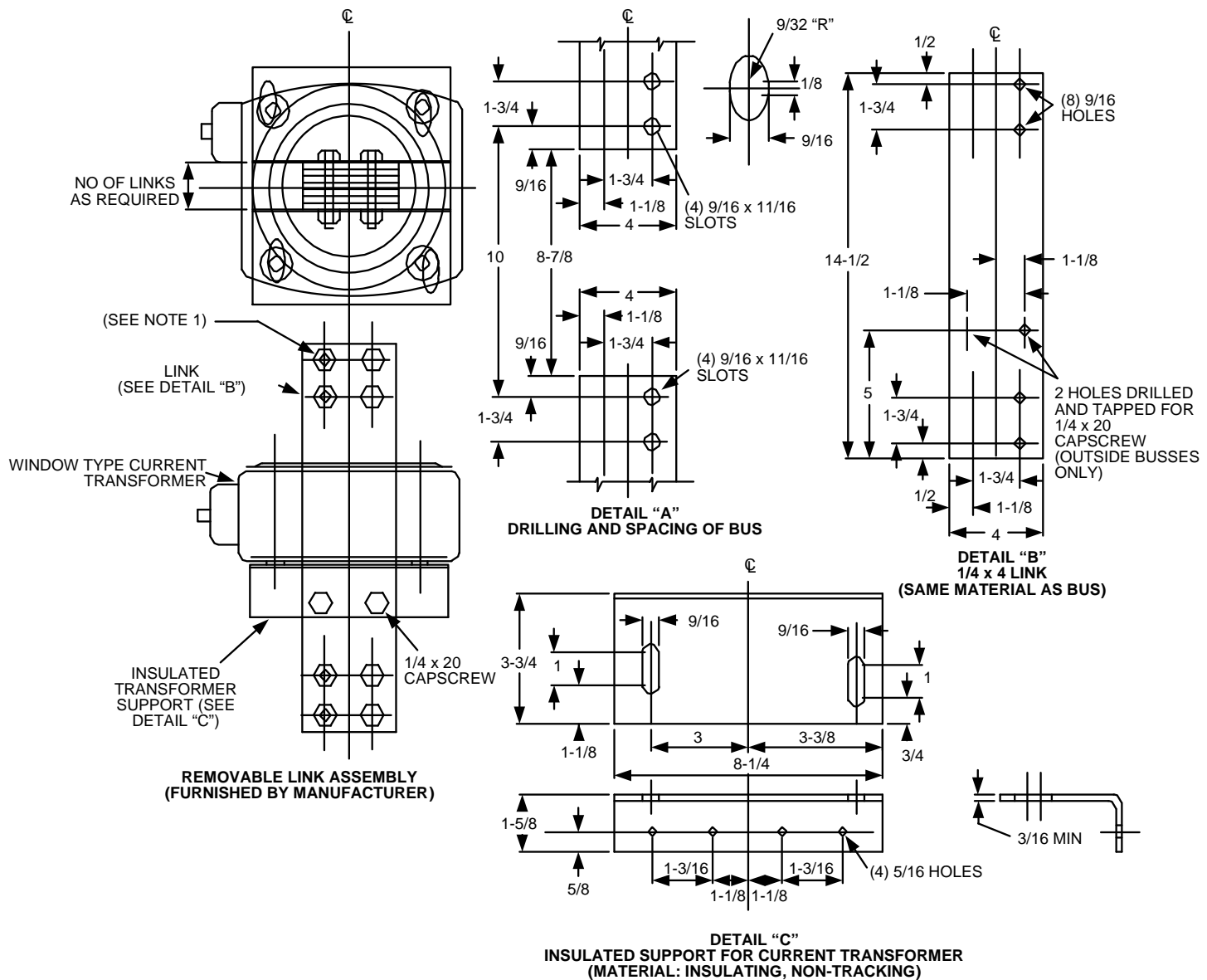



Metering Equipment: Material Requirements



All Dimensions Shown are in Inches


NOTES:

1. Manufacturer shall secure the removable bus link to the upper and lower current transformer bus units using 1/2" hex-head (grade 5) steel bolts with associated washers and nuts. Each bolt shall be provided with a flat washer, a spring washer, and a nut. Spring washers may be either a cone-type (Belleville or flat) shall be 2-1/4" minimum. Use of Belleville washers requires a label on each phase of the bus link assembly indicating proper torque setting.
2. Drill and tap two holes as shown on the outer bus units for 1/4" x 20 cap screws.

				Electric Service Requirements		RPM-30
				Removable Link & CT Support for Instrument Transformer with 4" Bus		
Drawn:	Eng:	Appr:	Date:			Revision: 1
DH	DH	DA	1106			Page 1 of 2

Metering Equipment: Material Requirements

THIS PAGE INTENTIONALLY LEFT BLANK

				Electric Service Requirements		RPM-30
				Removable Link & CT Support for Instrument Transformer with 4" Bus		
Drawn:	Eng:	Appr:	Date:	Revision: 1		
DH	DH	DA	1106	Page 2 of 2		