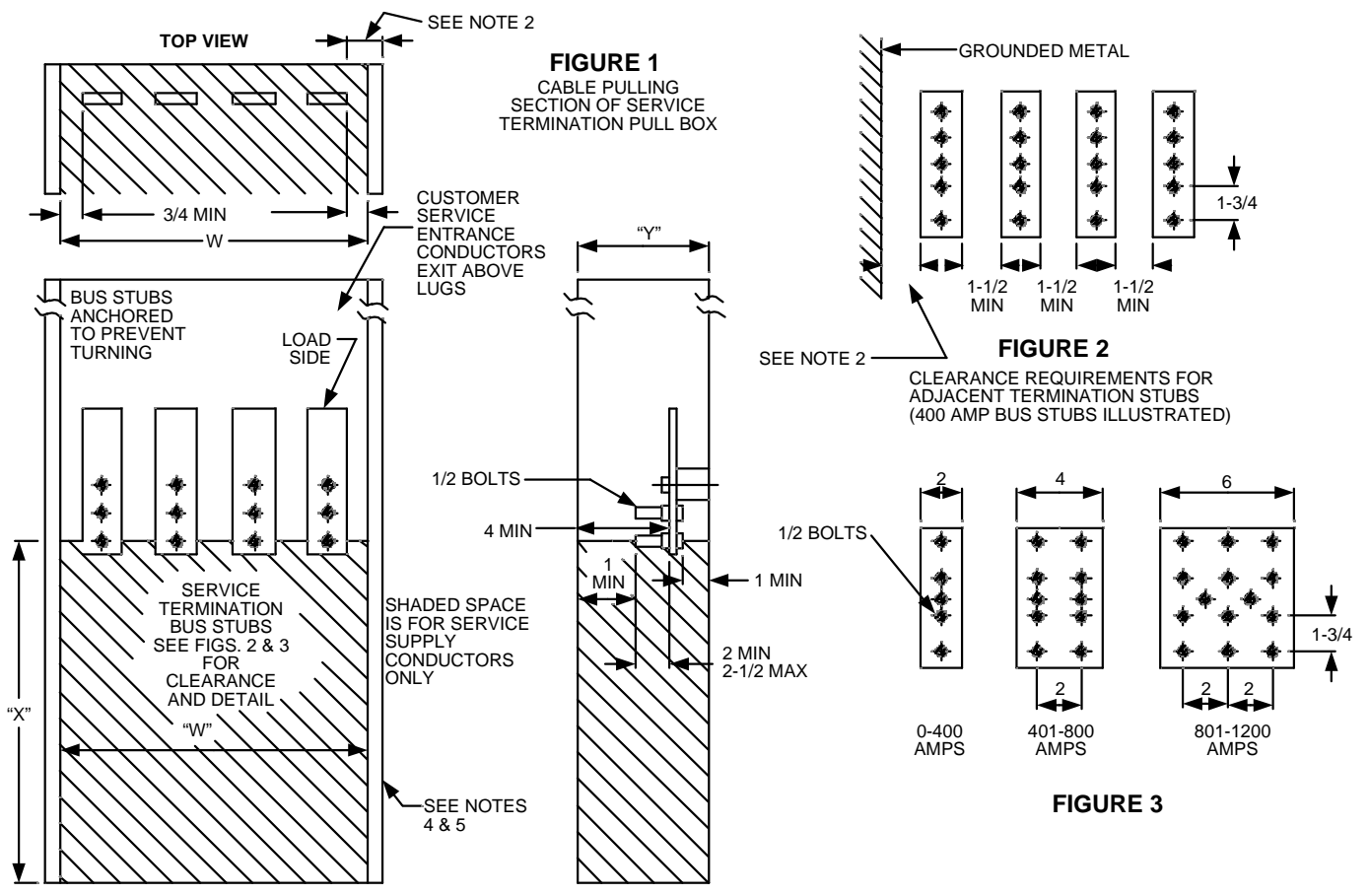


Metering Equipment: Material Requirements



All Dimensions Shown in Inches

Table 1. Minimum Pullbox Dimensions


Service Ampacity	"W"		"Y" Depth	Lug "X" Height	Minimum Conduit Requirements
	1 PH, 3-Wire	4-Wire			
0 – 200	10-1/2"	14"	6"	11"	1 – 4"
201 – 400	10-1/2"	14"	6"	22"	2 – 4"
401 – 600	16-1/2"	22"	11"	26"	3 – 4"
601 – 800	---	22"	11"	26"	3 – 4"
801 – 1200	---	30"	11"	26"	5 – 5"

	Electric Service Requirements			RPM-43
	Enclosure for Underground Service Termination: 0-1200 Amps			
Drawn:	Eng:	Appr:	Date:	Revision: 1
DH	DH	DA	12/06	Page 1 of 2

Metering Equipment: Material Requirements

NOTES:

1. The above dimensions are for the case where the conduit enters the bottom of the pull box and all load conductor exit above the terminals. Where the service conduit enters from the side or back of the pull box the "X" dimensions shall be taken from the closest portion of the conduit to the nearest termination bolt. Consult the Metering Department where the service exceeds 1200 amperes.
2. See RPM-47 for minimum termination clearances and for termination bus and bolt details.
3. Pull box covers shall be removable, sealable, provided with two lifting handles, and limited to a maximum size of 9 square feet in area.
4. Clear working space shall be maintained. Return flanges shall not intrude into the shaded space.
5. Dimension "W" is the minimum width of the pull box access opening.

				Electric Service Requirements		RPM-43
				Enclosure for Underground Service Termination: 0-1200 Amps		
Drawn:	Eng:	Appr:	Date:			Revision: 1
DH	DH	DA	12/06			Page 2 of 2