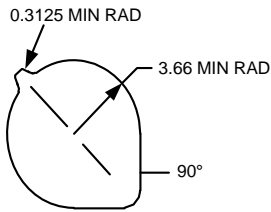
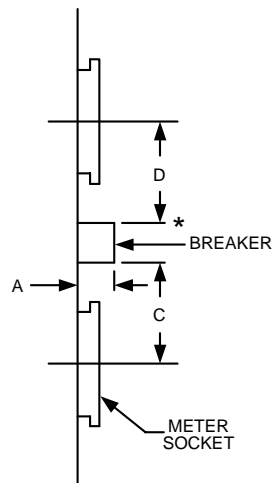


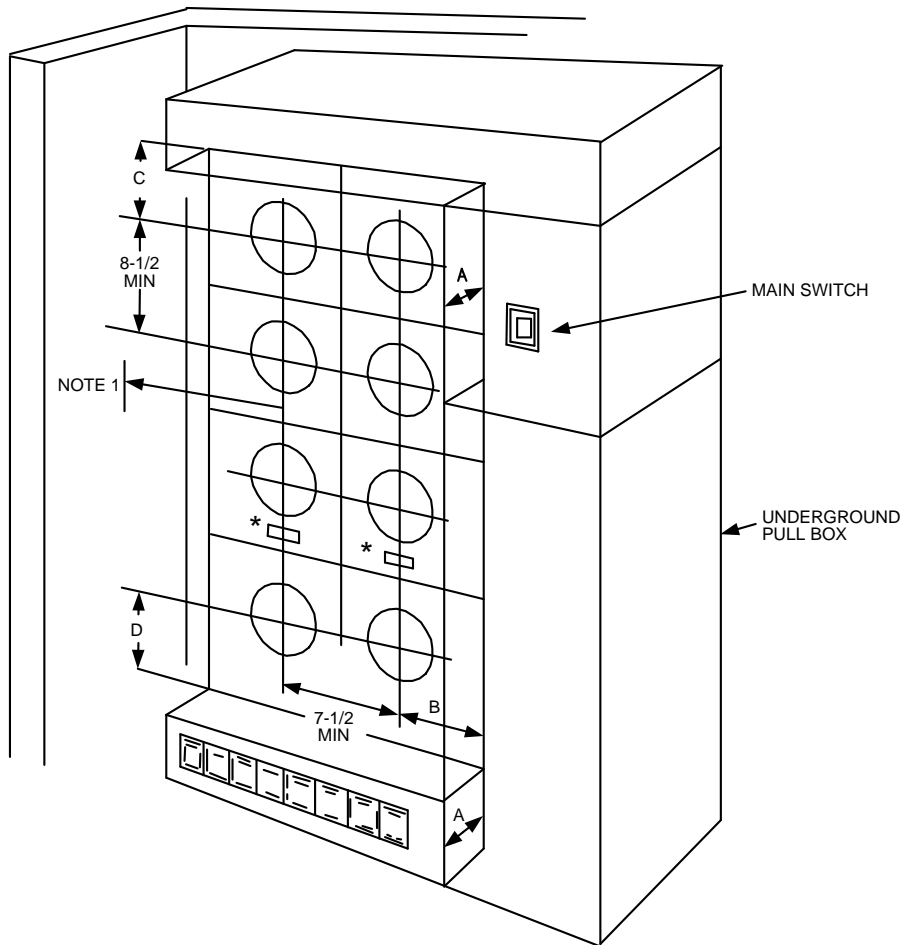
Metering Equipment: Material Requirements



**FIGURE 1
METER CONDUIT
DETAIL**



**FIGURE 2
SIDE VIEW
DETAIL**



All Dimensions Shown are in Inches

***Alternate Breaker Position below Meter Socket; see Side View Detail for Clearance Dimension**


"A" (PROTRUSIONS)	"B" MIN	"C" MIN	"D" MIN
0" (No Protrusions)	3-3/4"	4"	4-3/4"
Greater than 0" to 1 1/8"	4-1/4"	4"	4-3/4"
Greater than 1 1/8" to 2"	4-1/4"	4-1/4"	6-1/4"
Greater than 2" to 4"	6-1/4"	4-1/4"	8"
Greater than 4" to 11" Max	6-1/4"	10"	8"

	Electric Service Requirements			RPM-53
	Residential Multiple Metering Sections			
Drawn:	Eng:	Appr:	Date:	Revision: 1
DH	DH	DA	12/06	Page 1 of 2

Metering Equipment: Material Requirements

NOTES:

1. Where an adjacent wall or other obstruction extends more than 11" perpendicular from the face of the meter panel, a minimum dimension to the meter socket axis is required. For obstructions extending 11" or less from the meter panel, the side clearance shall conform to that of Dimension "B".
2. Panels shall be removable to provide access to the customer's equipment with the utility meters and tamper proof sealing rings in place. When there is more than one meter socket per panel, the minimum meter cutout opening, as detailed in Fig. 1 above shall apply.
3. Underground landing lugs shall not be placed under any socket cover.
4. See RPM-G for meter maximum and minimum heights.
5. Removable meter panel covers shall not exceed 6 square feet in area.
6. Distribution conductors shall be barriered from metering compartment.

				Electric Service Requirements		RPM-53
				Residential Multiple Metering Sections		
Drawn:	Eng:	Appr:	Date:	Revision: 1		
DH	DH	DA	12/06	Page 2 of 2		