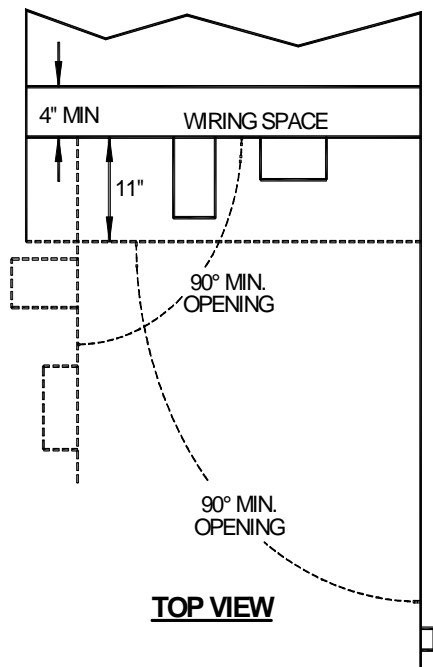
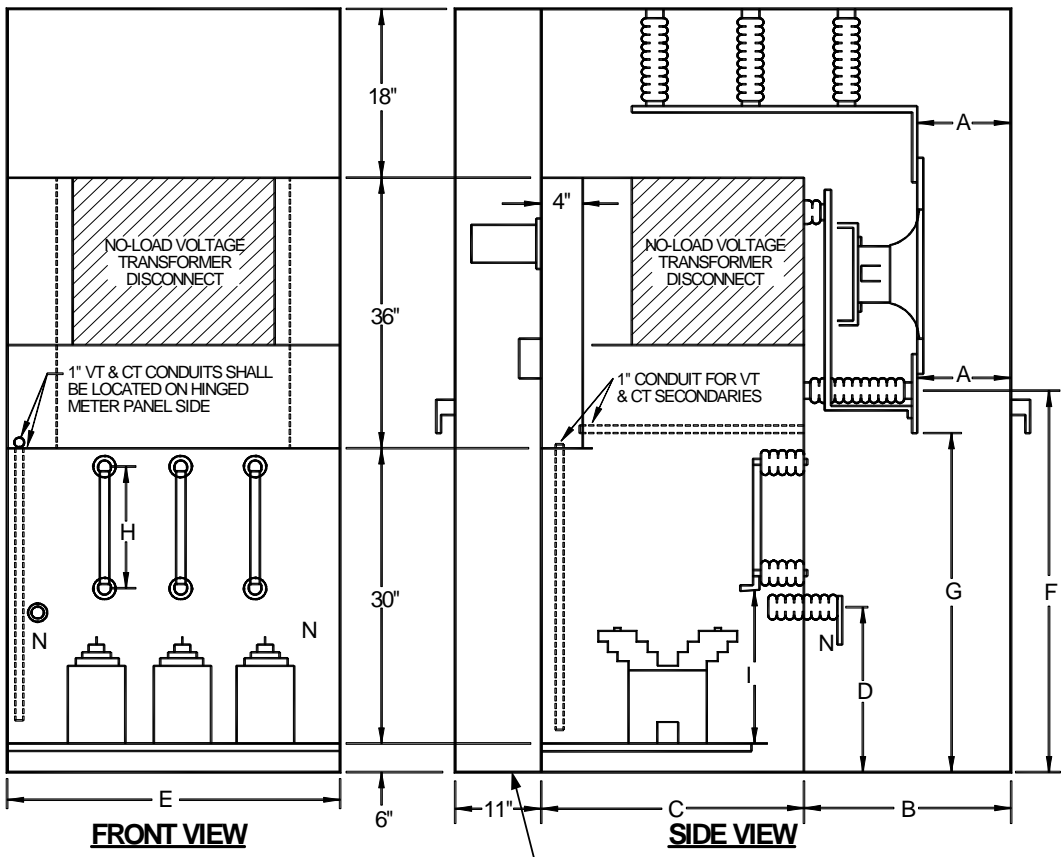



# Metering Equipment: Material Requirements



OUTDOOR NEMA 3R DOOR SHOWN


				Electric Service Requirements		RPM-401
				<b>High Voltage Metering Enclosure: 2,400-27,000 Volts</b>		
Drawn:	Eng:	Appr:	Date:			Revision: 1
DH	DH	MES	7/07			Page 1 of 4

## Metering Equipment: Material Requirements

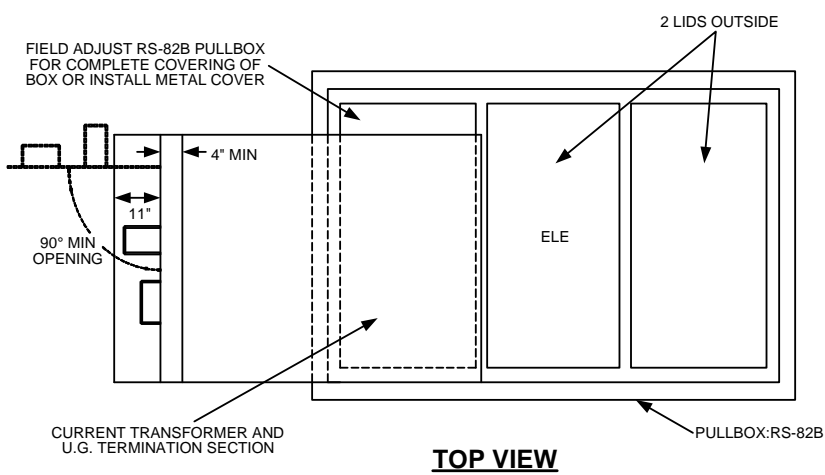
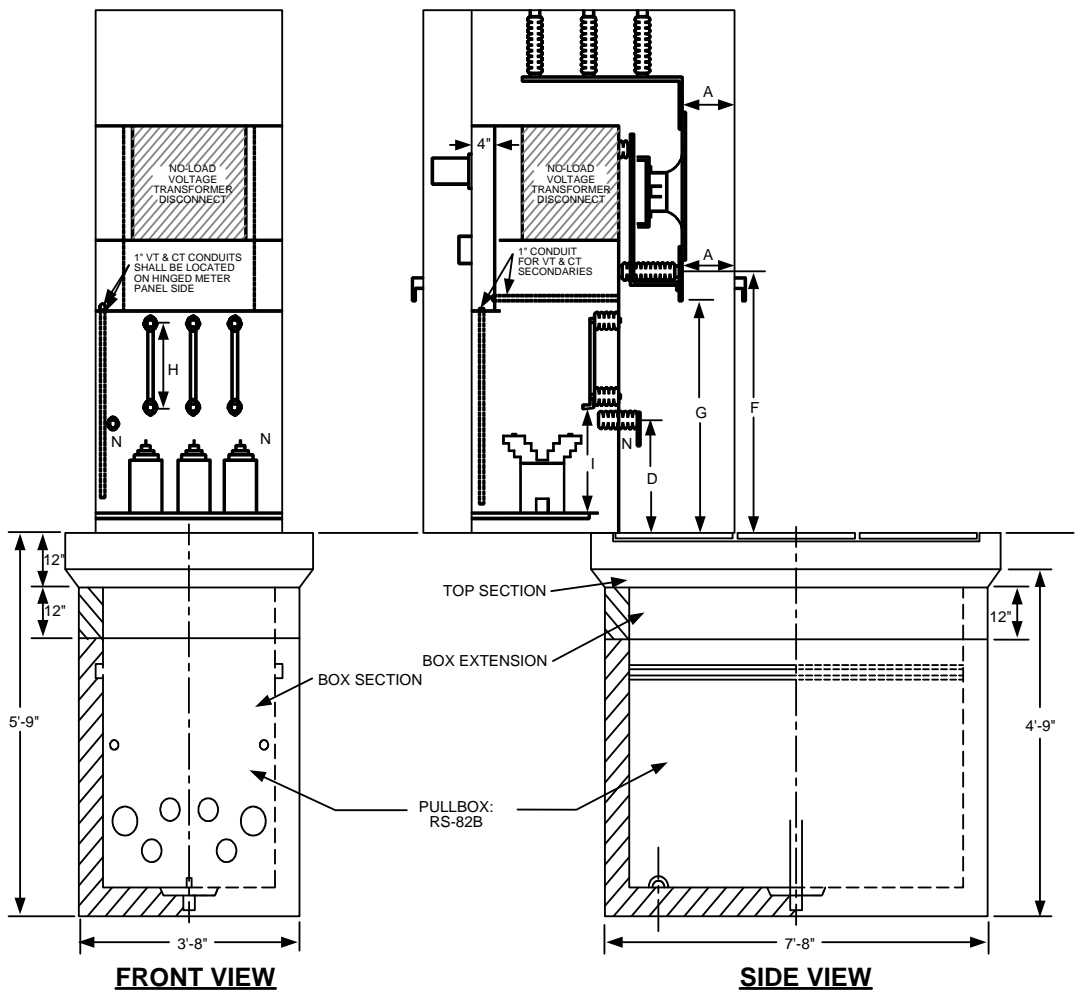
### NOTES:


1. For rear access door requirements, refer to RPM-400.
2. Consult the NVE Metering Department for wiring space requirements behind meter panel. Flush-mounted meters require a minimum, 10' wiring space.
3. Consult the NVE Metering Department for neutral bushing requirements
4. Primary taps for VTs shall be connected to line side of metering CTs.
5. Preliminary taps for VTs shall be connected to line side of metering CTs.

SPECIFICATIONS	VOLGATGE RATING			
	2400	4160/4800	7200/17000	20800/25000
MIN. BARE BUS CLEARANCE (Ø TO GROUND)	3-1/2"	3-1/2"	6"	7-1/2"
MIN. BARE BUS CLEARANCE (Ø TO Ø)	5"	5"	7-1/2"	9"
DIMENSION A	5" MIN 10" MAX	5" MIN 10" MAX	8" MIN 10" MAX	9" MIN 15" MAX
DIMENSION B	24" MIN	24" MIN	24" MIN	36" MIN
DIMENSION C	24" MIN	24" MIN	24" MIN	36" MIN
DIIIMENSION D	12" MIN	12" MIN	12" MIN	12" MIN
DIMENSION E	36" MIN	48" MIN	48" MIN	60" MIN
DIMENSIOIN F	42" MIN 48" MAX	42" MIN 48" MAX	42" MIN 48" MAX	56" MIN 60" MAX
DIMENSION G	36" MIN	36" MIN	36" MIN	48" MIN
DIMENSION H (FUSE MOUNTING CLIP CENTER)	8-1/2"	8-1/2"	11-1/2"	15"
DIMENSION H (FUSE FERRULE DIAMETER)	1-5/8"	1-5/8"	1-5/8"	1-5/8"
DIMENSION I	18"	18"	18"	CONSULT UTILITY

				Electric Service Requirements		RPM-401
				<b>High Voltage Metering Enclosure: 2,400-27,000 Volts</b>		
Drawn:	Eng:	Appr:	Date:	Revision: 1		
DH	DH	MES	7/07	Page 2 of 4		

# Metering Equipment: Material Requirements




				Electric Service Requirements		RPM-401
				<b>High Voltage Metering Enclosure: 2,400-27,000 Volts</b>		
Drawn:	Eng:	Appr:	Date:			Revision: 1
DH	DH	MES	7/07			Page 3 of 4

# Metering Equipment: Material Requirements

---

THIS PAGE INTENTIONALLY LEFT BLANK

				Electric Service Requirements		RPM-401
				<b>High Voltage Metering Enclosure: 2,400-27,000 Volts</b>		
Drawn:	Eng:	Appr:	Date:	Revision: 1		
DH	DH	MES	7/07	Page 4 of 4		