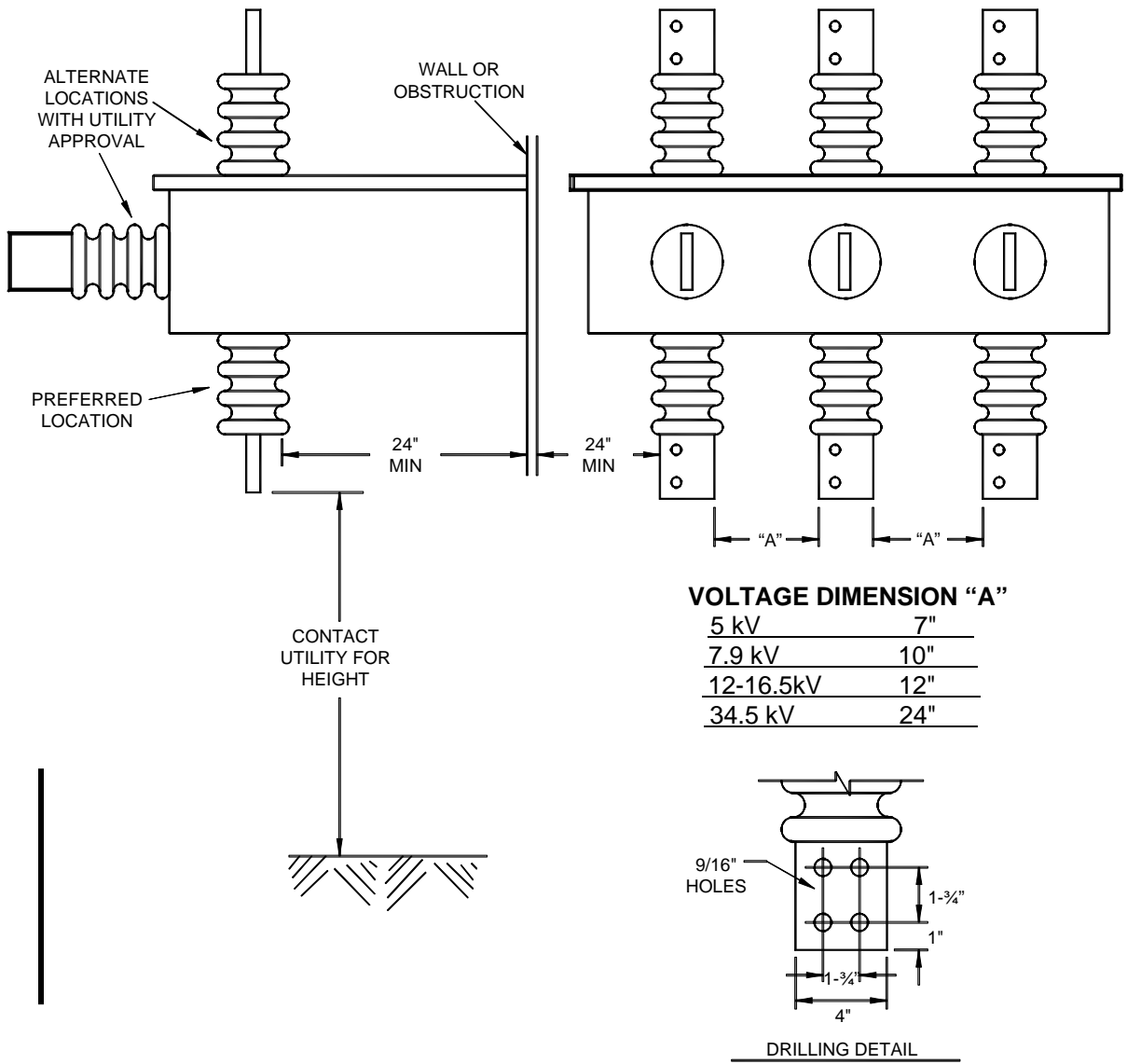


# Metering Equipment: Material Requirements




**NOTES:**

1. Number and size of lugs to be specified by utility.
2. Bushings to be spaced as shown in table above.
3. All bushings shall meet NEMA standards for creep distance, except 16.5kV which shall have 15" minimum creep distance.

				Electric Service Requirements		RPM-412
				<b>Busway Servicehead: 3 or 4 Wire 750-34,500V</b>		
Drawn:	Eng:	Appr:	Date:			Revision: 1
DH	DH	DA	2/07			Page 1 of 2

THIS PAGE INTENTIONALLY LEFT BLANK

				Electric Service Requirements		RPM-412
				<b>Busway Servicehead: 3 or 4 Wire 750-34,500V</b>		
Drawn:	Eng:	Appr:	Date:			Page 2 of 2
DH	DH	DA	2/07			