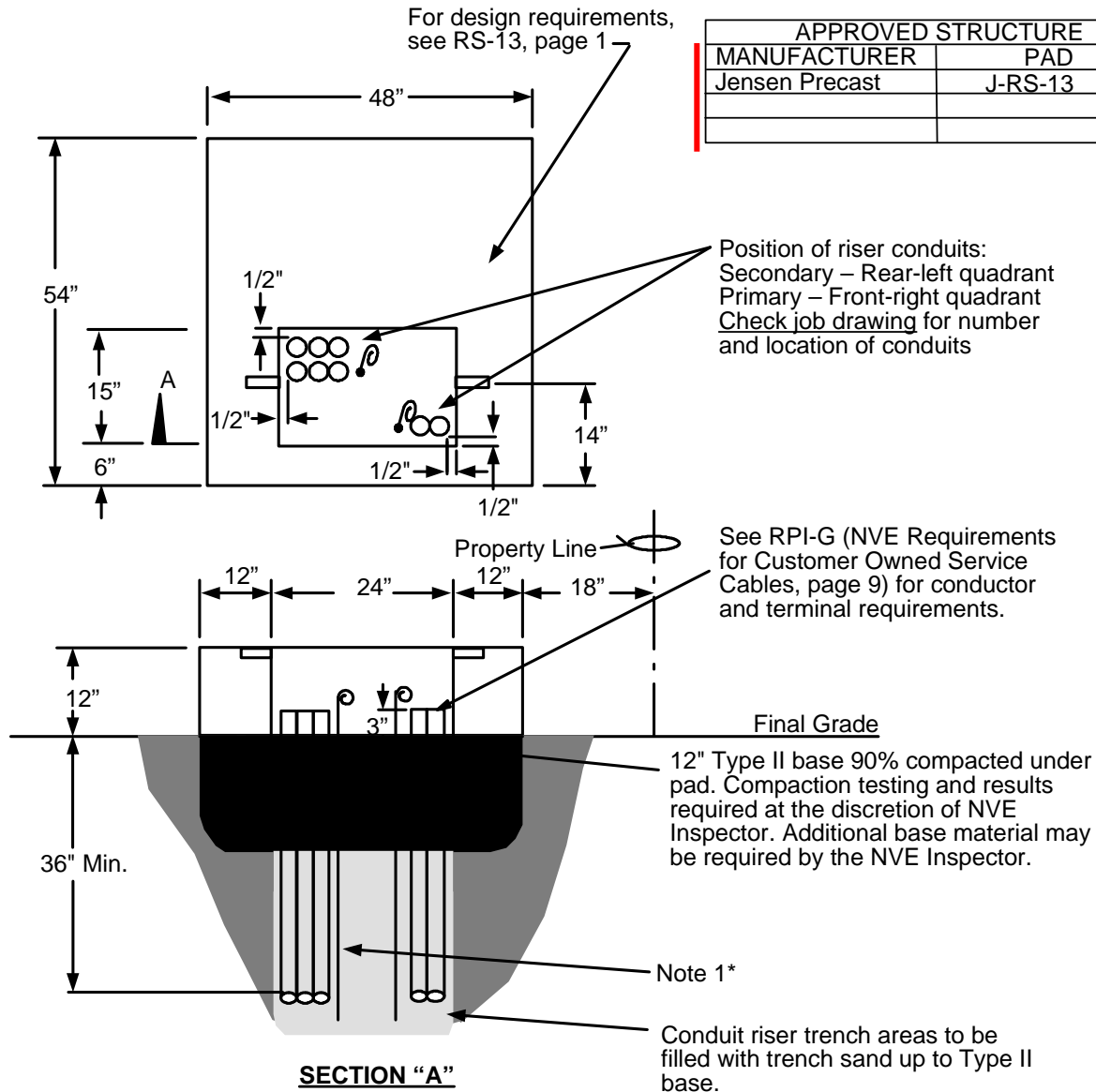


# Equipment Pads

## INSTALLATION REQUIREMENTS




### NOTES:

1. Grounding by customer shall be 2-50' #2 stranded bare copper ground wires laid in the bottom of the conduit trench in opposite directions with 2-5' tails in the pad opening.
2. For location and clearances to other structures, see: RS-5.
3. Retaining wall required when grade from bottom of pad rises or lowers more than 1' in 5' horizontally

\*Only at the discretion of NVE's inspectors and T&D Standards, a 1/2"x8' copper ground rod can be installed in accordance with the 2012 NESC C2-2012 Section 9, Grounding Methods for Electric Supply and Communications Facilities or latest version.

	Electric Service Requirements			RS-19
	<b>Commercial Transformer Pad:                  One 1Ph, 12 or 25kV</b>			
Drawn:	Eng:	Appr:	Date:	Revision: 2
JR	RD	DA	8/15	Page 1 of 2

THIS PAGE INTENTIONALLY LEFT BLANK

	Electric Service Requirements			<b>RS-19</b>
	<b>Commercial Transformer Pad: One 1Ph, 12 or 25kV</b>			
Drawn:	Eng:	Appr:	Date:	Revision: 2
JR	RD	DA	8/15	Page 2 of 2