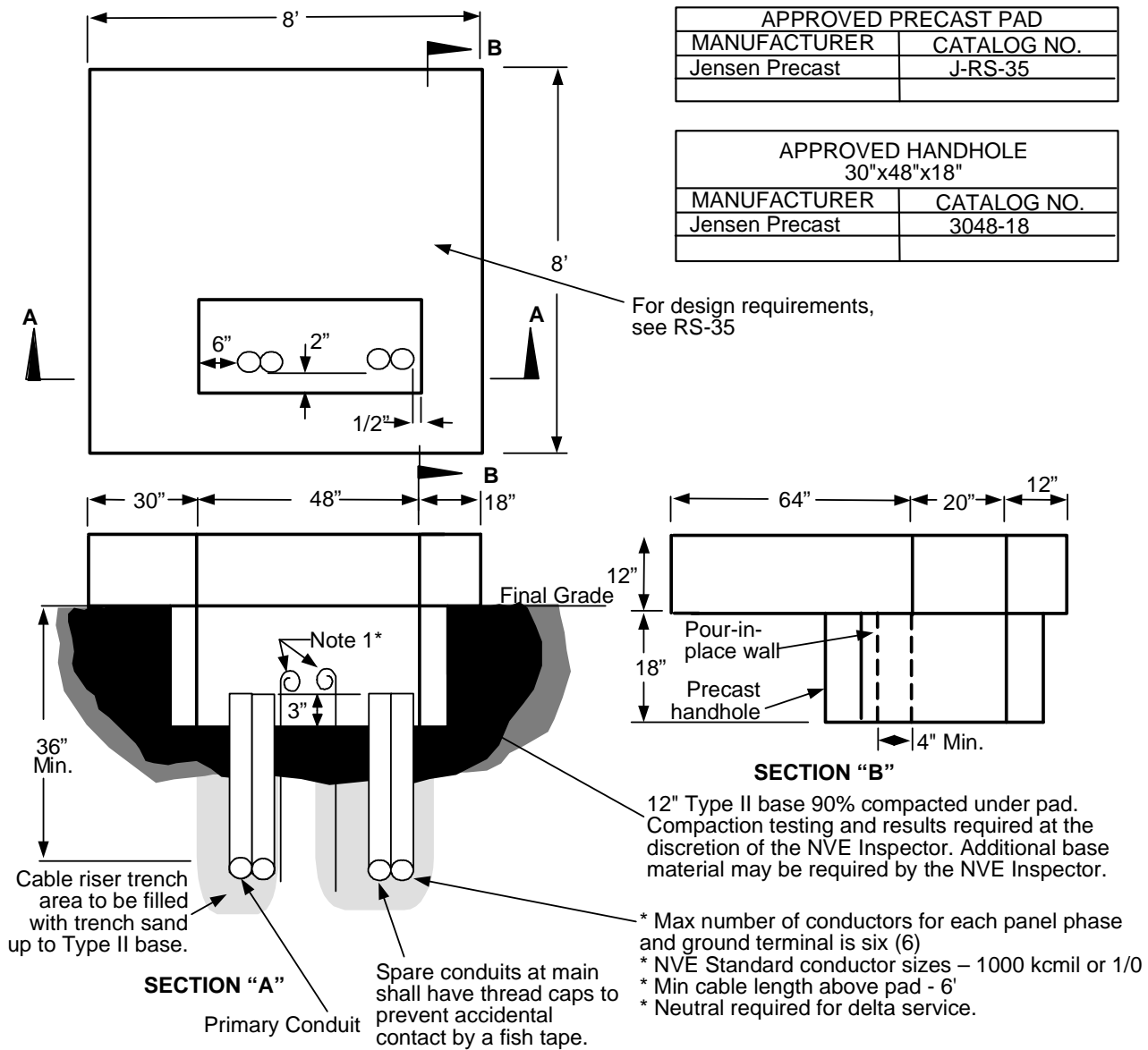


INSTALLATION REQUIREMENTS




NOTES:

1. Grounding by customer shall be 2-50' #2 stranded bare copper ground wires laid in the bottom of the conduit trench in opposite directions with 2-5' tails in the pad opening.
 2. For location and clearances to other structures, see RS-5.
 3. Retaining wall required when grade from bottom of pad rises or lowers more than 1' in 5' horizontally.
 4. All secondary conduits shall be located within 24" of the right side of the pad opening.
 5. The top of the pad shall be leveled and must clear the final grade by 12".
- * Only at the discretion of NVE's inspectors, a 1/2"x8' copper ground rod can be installed in accordance with the 2012 NESC C2-2012 Section 9, Grounding Methods for Electric Supply and Communications Facilities or latest version.

				Electric Service Requirements		RS-40
				<p align="center">Transformer Pad: 3 Ph, 12kV to 4kV Step Down</p>		
Drawn:	Eng:	Appr:	Date:			Revision: 2
JR	RD	DA	9/15			Page 1 of 2

THIS PAGE INTENTIONALLY LEFT BLANK

				Electric Service Requirements		RS-40
				Transformer Pad: 3 Ph, 12kV to 4kV Step Down		
Drawn:	Eng:	Appr:	Date:	Revision: 2		
JR	RD	DA	9/15	Page 2 of 2		