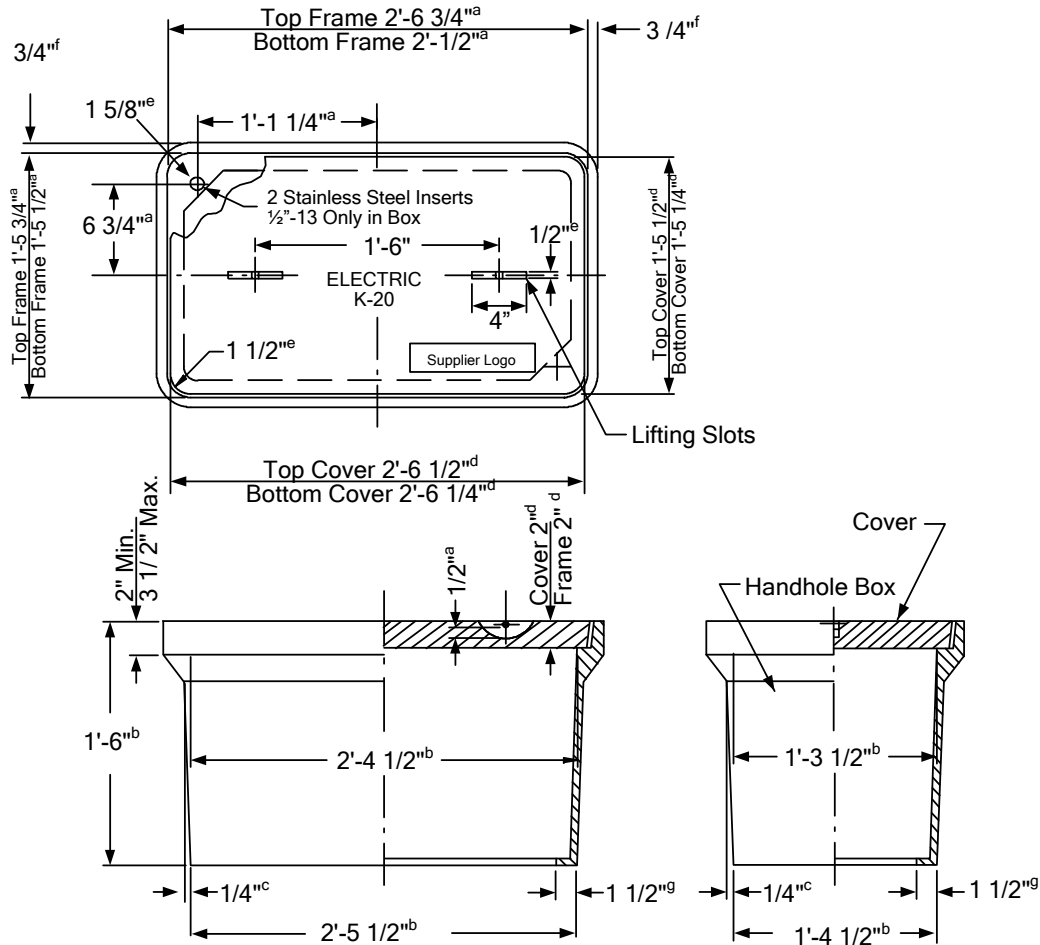


DESIGN REQUIREMENTS

TOLERANCES:

- a = +1/16", -1/16"
- b = +1/2", -1/2"
- c = +1/8", -1/4"
- d = +1/32", -1/32"
- e = +1/16", -0"
- f = +1/4", -0"
- g = +1/2", -1/4"

APPROVED HANDHOLE		
MANUFACTURER	HANDHOLE BOX	COVER
Armorcast	A6001640PC	A6001947-NP
CDR	PB24-1730-18NP	PC04-1730-02NPKTL
Quazite	PG1730B509	PG1730H50179
Polycrete (Rockway)	R-RS-1	C-RS-1
Oldcastle	PC 1730-18	1730-D T15



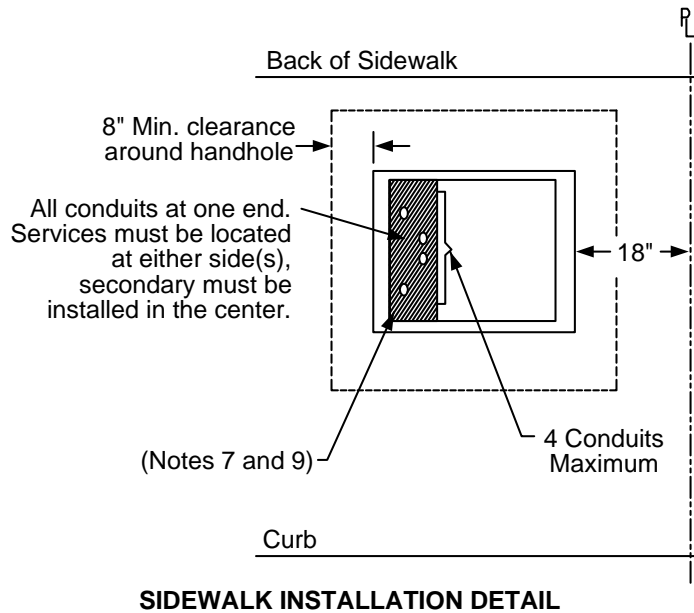
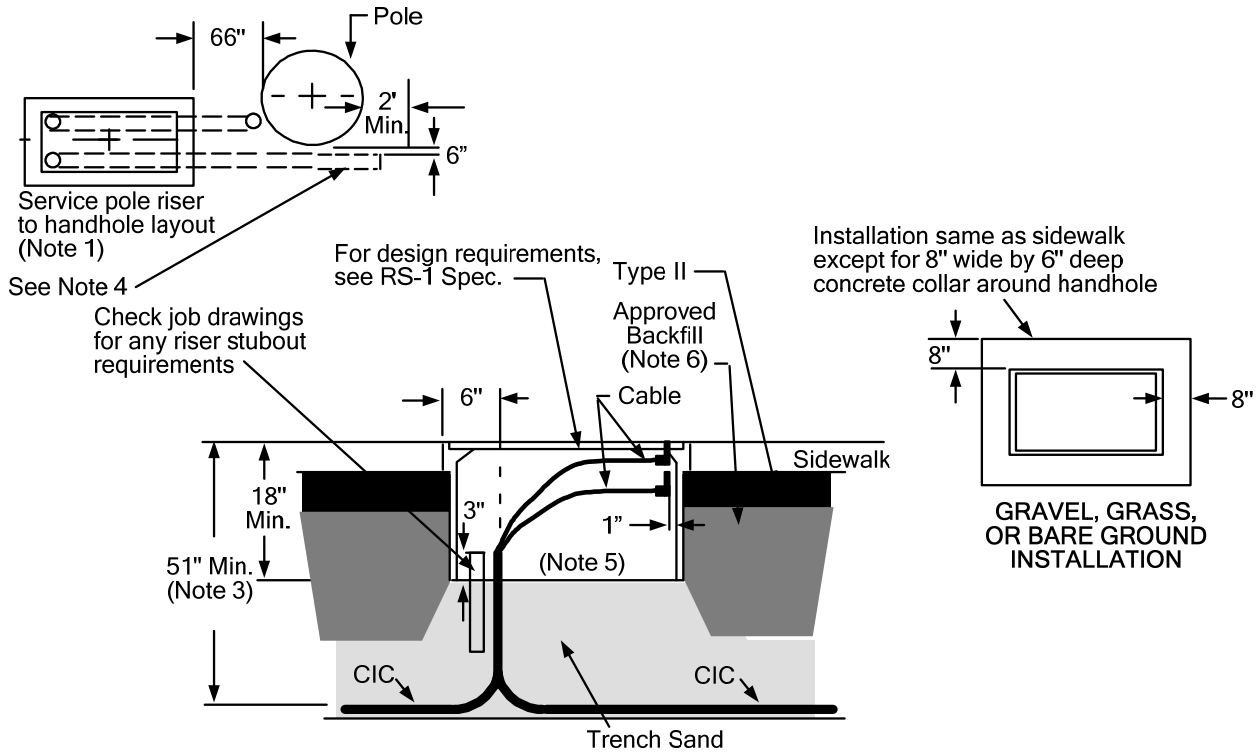
RS-1 HANDHOLE

NOTES:

- The handhole shall meet specification RS-G1.

				Electric Service Requirements		RS-1
				Handhole: Secondary Junction		
Drawn:	Eng:	Appr:	Date:	Revision: 2		Page 1 of 4
SC	SC	DA	7/12			

Vaults and Boxes




				Electric Service Requirements		RS-1
				Handhole: Secondary Junction		
Drawn:	Eng:	Appr:	Date:			Revision: 2
SC	SC	DA	7/12			Page 2 of 4

Vaults and Boxes

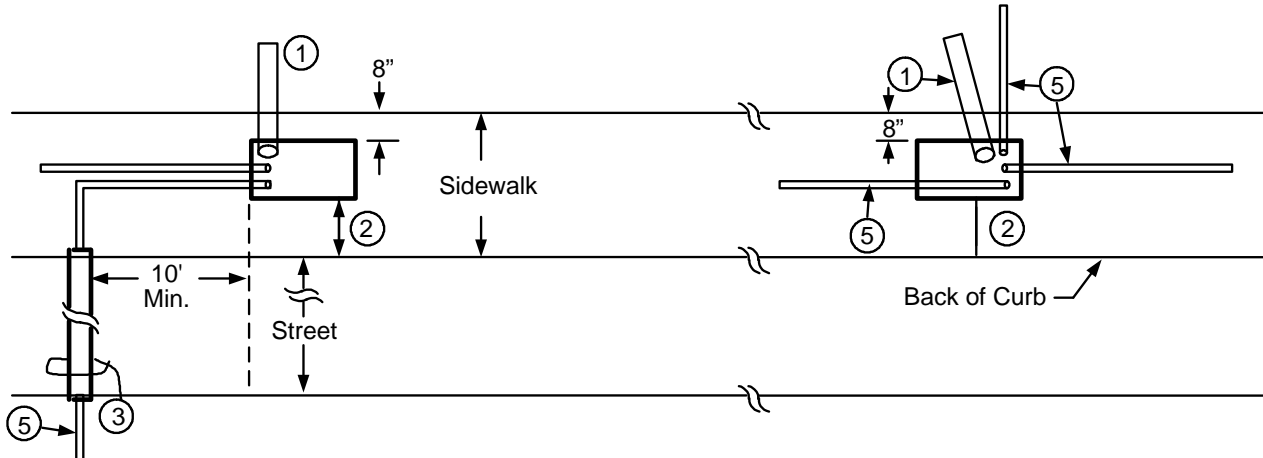
NOTES:

1. The NVE Inspector will place a grade stripe on the pole and stake location of handhole relative to the residential service pole riser.
2. If this structure does not meet all requirements or exhibits poor workmanship, it shall be rejected by NVE.
3. 51" minimum is for the handhole only.
4. A 3" PVC stubout is required if a future residential CIC system service or a 4" stubout for commercial service will be installed. The stubout must pass adjacent to the pole as illustrated.
5. Cable must be trained and cut so that the backs of the connector blocks are a minimum of 1" from the end of handhole wall as illustrated.
6. For backfill requirements see RT-1.
7. Stubouts for future services must be placed per "Sidewalk Installation Detail".
8. 9There shall be a minimum 6' clearance from the handhole to the center of a fire hydrant.
9. There shall be a minimum 1" separation between conduits to facilitate the installation of debris seals.

				Electric Service Requirements		RS-1
				Handhole: Secondary Junction		
Drawn:	Eng:	Appr:	Date:	Revision: 2		
SC	SC	DA	7/12	Page 3 of 4		

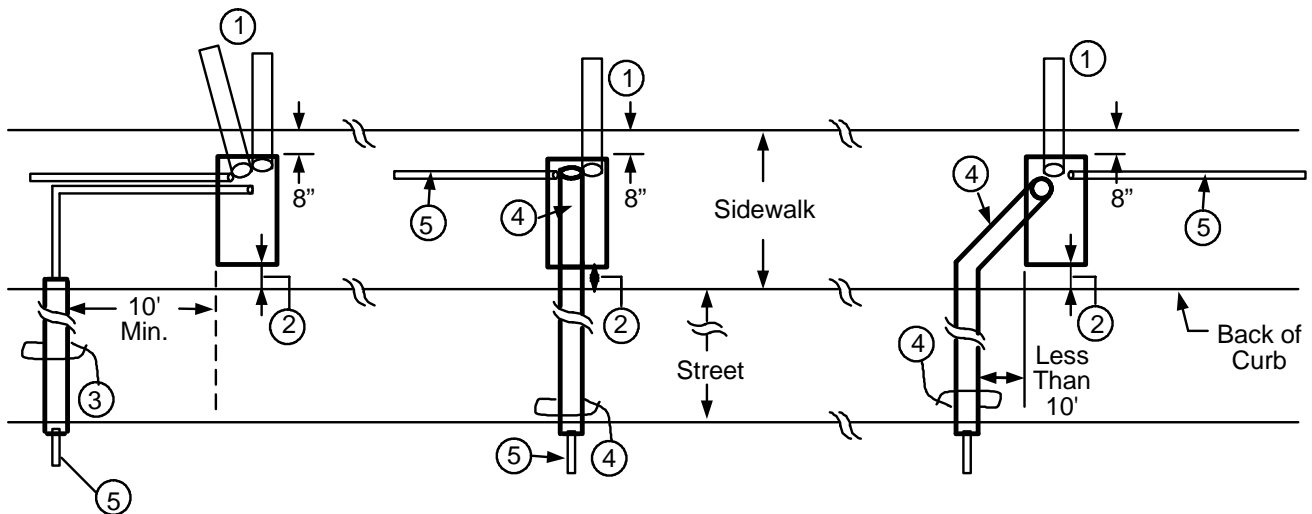
Vaults and Boxes

APPROVED CIC ROUTING HANDHOLE



Note: Circled numbers reference notes below

JUNCTION BOX PLACED PARALLEL WITH 3' MINIMUM SIDEWALK




Note: Circled numbers reference notes below

JUNCTION BOX PLACED PERPENDICULAR WITH 4' MINIMUM SIDEWALK

NOTES:

1. If there are future services, the customer shall install a 3", 36" radius, 90° Schedule 40 PVC Bend stubout for each future CIC service. This will prevent undermining the sidewalk and dislocating the handhole.
2. There shall be a minimum of 8" of concrete around the handhole in the sidewalk.
3. If the customer installs a street crossing conduit, it shall be a 4" Schedule 40 PVC conduit for each secondary.
4. If a street crossing conduit is extended into a handhole (or a pull box), a 3", 36" radius, Schedule 40 PVC bend is required.
5. Installed secondary CIC.

				Electric Service Requirements		RS-1
				Handhole: Secondary Junction		
Drawn:	Eng:	Appr:	Date:			Revision: 2
SC	SC	DA	7/12			Page 4 of 4