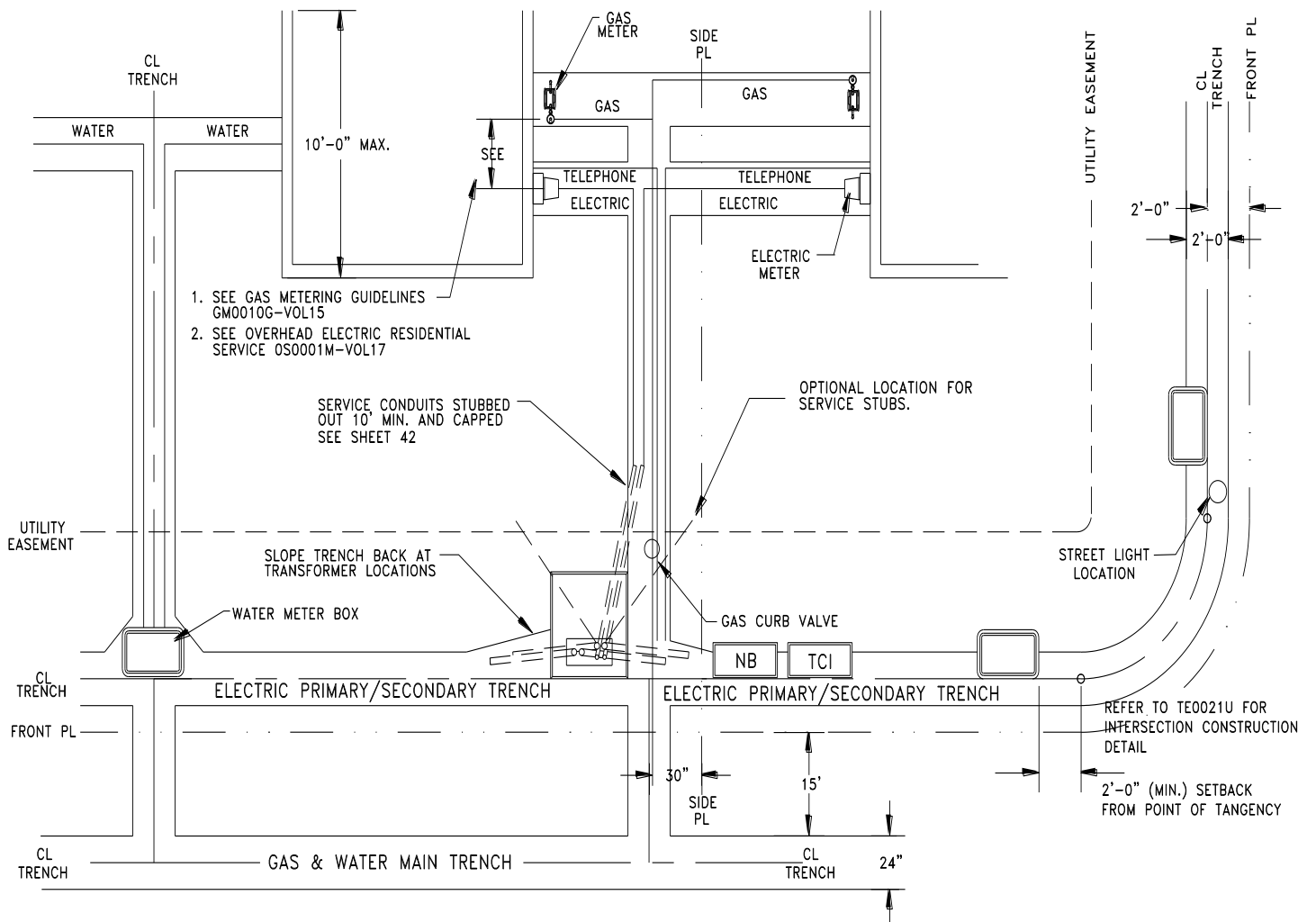


GENERAL UTILITY LOCATION DETAILS

NOTES:

1. PREFERRED ELECTRIC LOCATIONS ARE TO THE LEFT OF SIDE PROPERTY LINE WHEN LOOKING FROM STREET.
2. PREFERRED GAS LINE LOCATION IS 30" LEFT OF PROPERTY LINE.
3. GAS CURB VALVE WILL BE BEHIND ELECTRIC FACILITIES.
4. OTHER UTILITIES (NB, TCI, ETC.) WILL BE LOCATED TO THE RIGHT SIDE OF PROPERTY LINE.

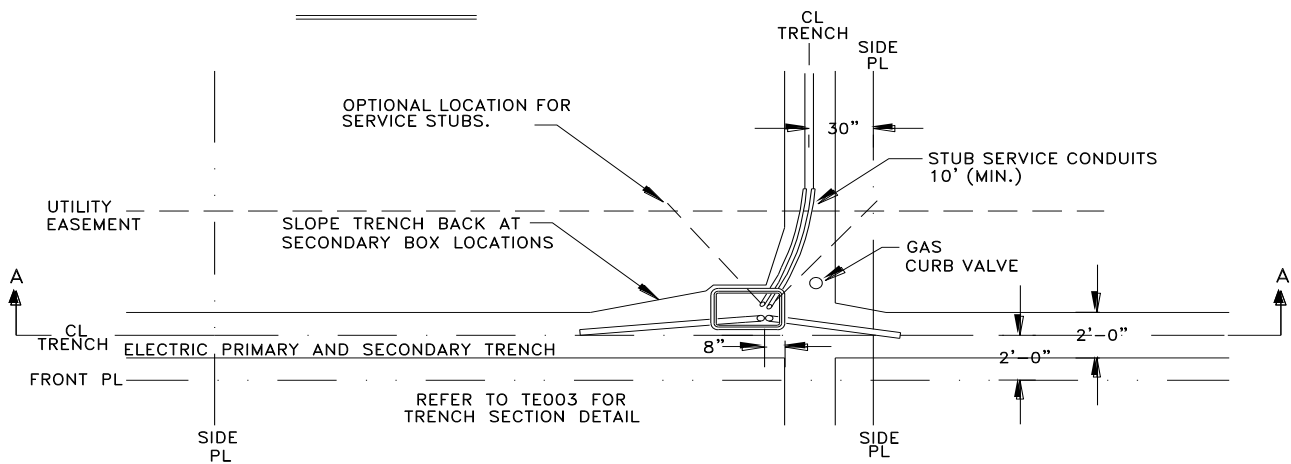
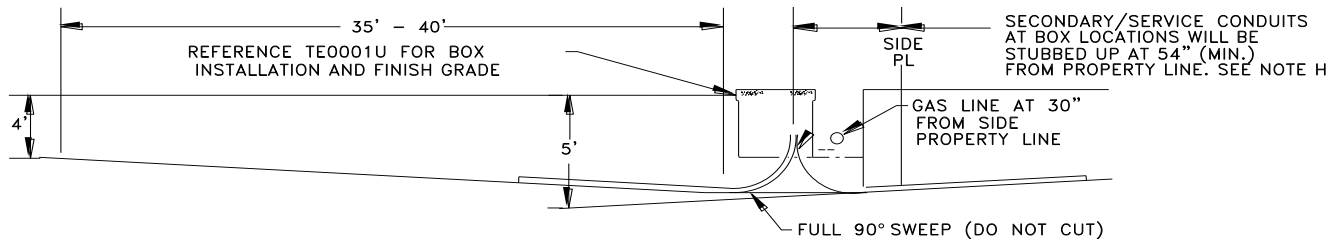
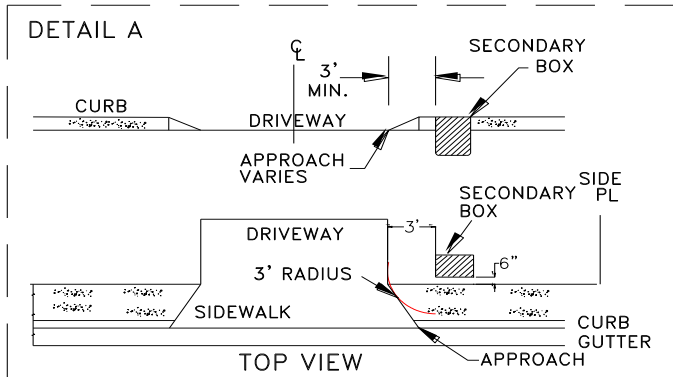


				VOLUME 17 – ENGINEERING & CONSTRUCTION STANDARD		TE0020U
				EQUIPMENT LOCATION DETAILS – RESIDENTIAL		
Drawn:	Eng:	Appr:	Date:	Revision: 4 Page 1 of 6		
JVV	MB	DA	04/16			

PERFERRED SECONDARY BOX LOCATION DETAIL
BOXES PLACED PARALLEL TO FRONT PROPERTY LINE

CONSTRUCTION NOTES:

- 1 LEAVE 4" OF CONDUIT ABOVE THE BOTTOM OF THE BOX AND CAP ALL CONDUIT ENDS. WHEN ENTERING SECONDARY BOX USE 90 SWEEPS. ALL CONDUIT SHALL BE PLACED AT THE SAME END OF BOX. A MINIMUM 4" FROM BOX SIDE WALL.
- 2 ALL BOXES WILL BE INSTALLED OR LOCATED A MINIMUM OF 3 FEET FROM THE VEHICLE ACCESS. APPROACH OF ANY DRIVEWAY AND WILL MAINTAIN A 3' RADIAL CLEARANCE FROM ALL DRIVEWAYS, (SEE DETAIL A).
- 3 IF THE NVE INSPECTOR DETERMINES THAT THE BOX WILL BE SUBJECT TO VEHICULAR TRAFFIC THE BOX WILL BE INSTALLED ON A 1-1/2" CONCRETE BASE, POURED ON 6" OF TYPE 2 BASE MATERIAL, COMPACTED TO 95%.
- 4 ALL BOX LOCATIONS SHALL BE A MINIMUM OF 4-1/2 FEET BEHIND BACK FACE OF CURB ON STREETS WHERE SIDEWALKS ARE NOT IMMEDIATELY INSTALLED, 6-1/2 FEET FROM EDGE OF PAVEMENT OR 2 FEET BEHIND PROPERTY LINE WHICHEVER IS GREATER. IF SPACE IS A LIMITATION BOX CAN BE TURNED PERPENDICULAR TO THE PROPERTY LINE.
- 5 NVE MAY REQUIRE RETAINING WALLS OR GUARDPOST INSTALLATION FOR REQUIRED SAFETY OF FACILITIES.
- 6 ALL SERVICE CONDUITS TO BE STUBBED OUT AT SAME TIME AS MAINLINE INSTALLED.
- 7 BOX WILL BE PLACED IN RELATIONSHIP TO FINISH GRADE AS REFERENCED IN TE0001U.
- 8 12" OF CLEARANCE MUST BE MAINTAINED BETWEEN THE CONDUIT & OTHER UTILITIES.

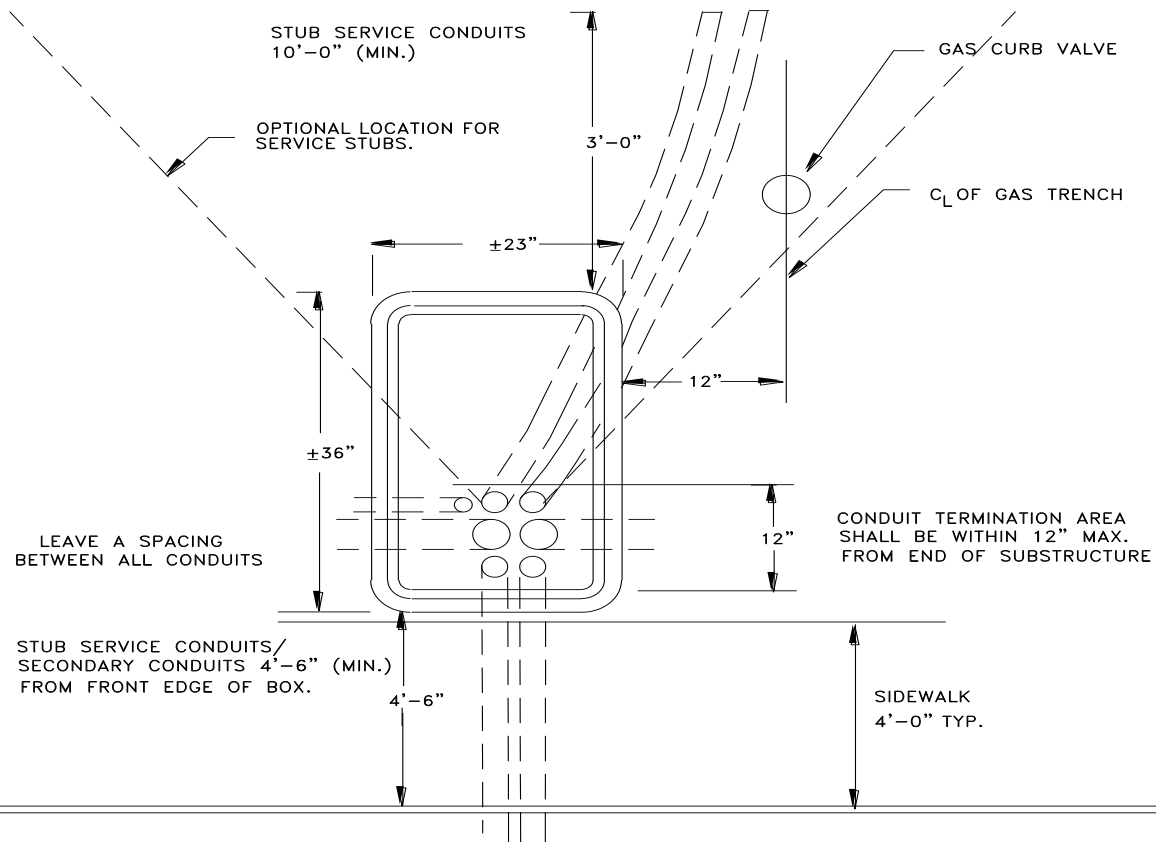


				VOLUME 17 – ENGINEERING & CONSTRUCTION STANDARD		TE0020U
				EQUIPMENT LOCATION DETAILS – RESIDENTIAL		
Drawn:	Eng:	Appr:	Date:			Revision: 4
JVV	MB	DA	04/16			Page 2 of 6

TYPICAL SPLICE BOX PLAN VIEW

CONSTRUCTION NOTES:

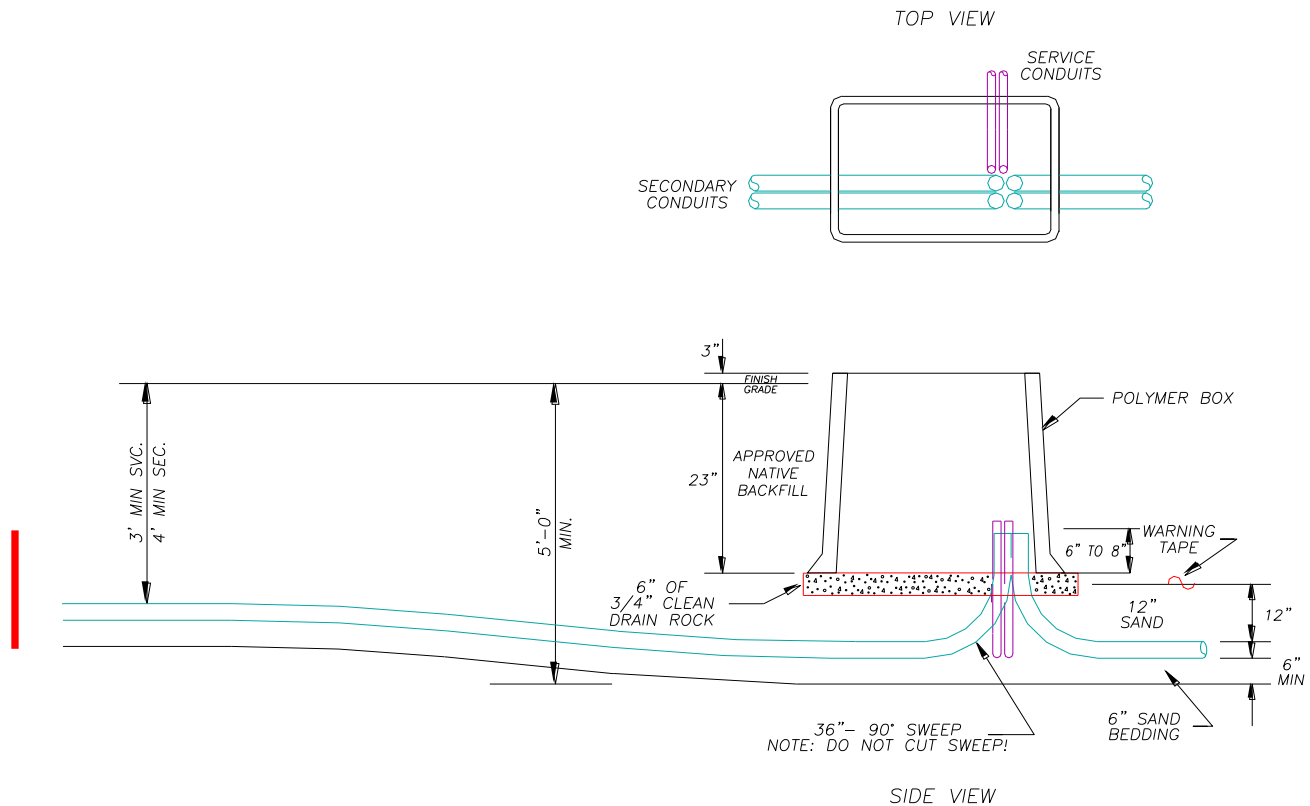
- 1 CUT CONDUIT ONLY – NOT SWEEPS (90° ELBOWS).
- 2 CONDUITS MUST ENTER BOX AT ONE END ONLY FOR MAXIMUM CABLE TRAINING ROOM.
- 3 STUB UP CONDUITS AT PROPER DISTANCE FROM PROPERTY LINE.
- 4 ALL BOXES TO BE SET ON 6" OF 3/4" CLEAN DRAIN ROCK. FOR LIGHT TRAFFIC APPLICATION THE INSTALLATION WILL BE ON A 1-1/2" CONCRETE BASE, POURED ON 6" OF TYPE 2 BASE MATERIAL COMPACTED TO 95%.
- 5 DO NOT BACKFILL WITH LARGE ROCKS OR DEBRIS THAT COULD BREAK THE BOX WHEN TAMPED.
- 6 A CONCRETE COLLAR, 12"x12" WILL BE REQUIRED WHEN INSTALLING BOXES IN TRAFFIC AREAS (ASPHALT, & UNPAVED), THE CONCRETE COLLAR WILL BE INSTALLED AROUND THE TOP SECTION OF BOX, A MIN. 2" BELOW FINISH GRADE. THE REMAINING 2" WILL MATCH FINISH GRADE. IF IN DIRT CONCRETE WILL MATCH FINISH GRADE @ BOX AND TAPER OFF.
- 7 BOX WILL BE PLACED IN RELATIONSHIP TO FINISH GRADE. AS REFERENCED IN TE0001U.
- 8 ALL GRADE ADJUSTMENTS WILL BE DONE FROM THE BOTTOM OF THE BOX. THIS WILL BE ACCOMPLISHED BY ADJUSTING AND/OR ADDING ADDITIONAL MATERIAL, ALONG WITH RE-COMPACTION AND TESTING IF NECESSARY.



TYPICAL PLAN VIEW

	VOLUME 17 – ENGINEERING & CONSTRUCTION STANDARD			TE0020U
	EQUIPMENT LOCATION DETAILS – RESIDENTIAL			
Drawn:	Eng:	Appr:	Date:	Revision: 4
JVV	MB	DA	04/16	Page 3 of 6

SPLICE BOX INSTALLATION



Notes:

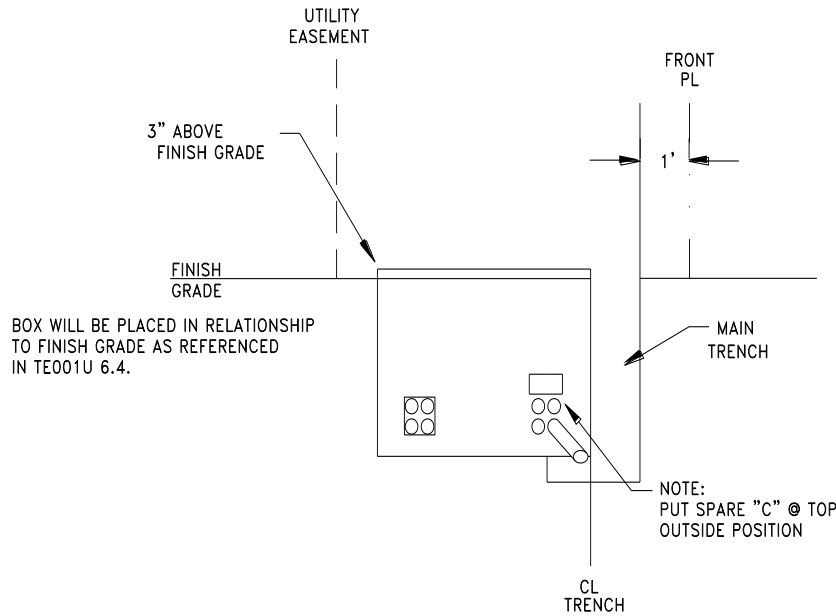
- A. Box is used in non-traffic or light traffic (parking lots, sidewalk, and driveway) areas.
- B. Non-traffic installation: Box is to be placed on 6" of 3/4" clean drain rock. Install 3" above finished grade (shown above).
- C. Light traffic installation: Box is to be installed on a 1-1/2" concrete base, poured on 6" of type 2 base material compacted to 95%. Install 1/4" below finished grade.
- D. For asphalt applications, a 12" x 4" deep concrete wrap will be installed around the top of the box.
- E. All lids are marked "ELECTRIC", and are secured with a penta-head coil type bolt.

General Notes:

- Leave 6-8" of conduit above bottom of the box. A 1/4" flat polyester pull line w/ sequential footage markings and a minimum 400 lb. breaking strength, to be installed in each conduit by customer.
- Ends of all conduits will be capped or plugged with a temporary plug.
- All conduits shall be placed at same end of box at a minimum of 4" from box side wall.

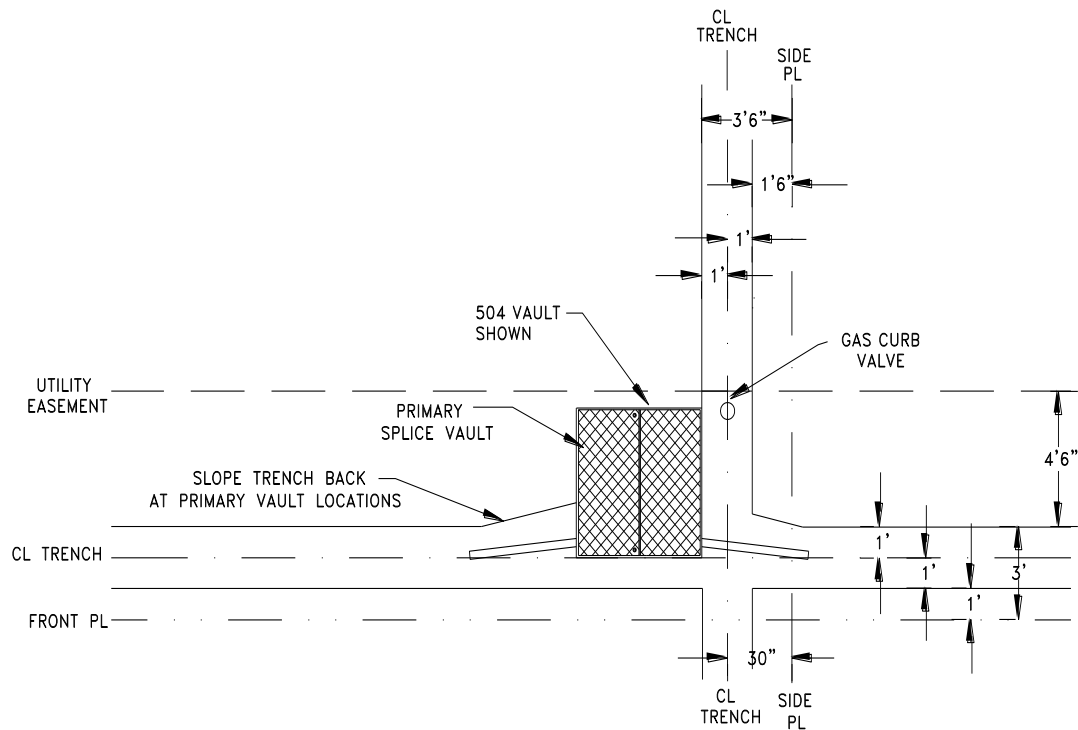
				VOLUME 17 – ENGINEERING & CONSTRUCTION STANDARD		TE0020U
				EQUIPMENT LOCATION DETAILS – RESIDENTIAL		
Drawn:	Eng:	Appr:	Date:			Revision: 4
JVV	MB	DA	04/16			Page 4 of 6

PRIMARY VAULT LOCATION DETAIL



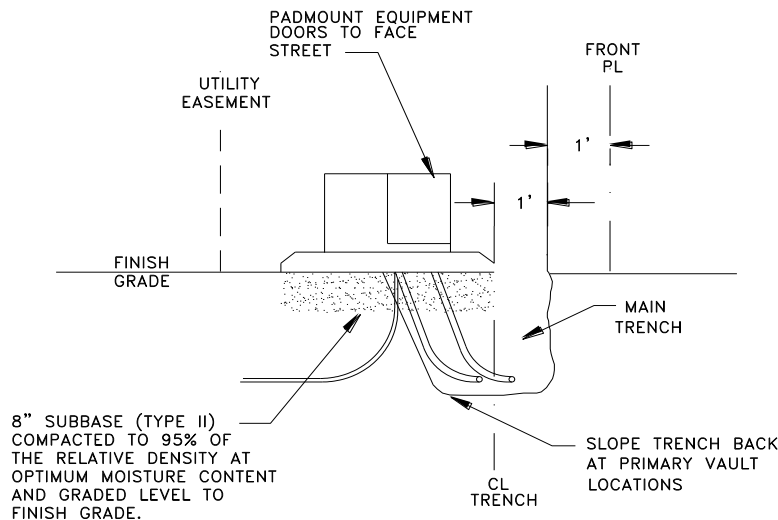
CONSTRUCTION NOTES:

- (A) CONTRACTOR TO DETERMINE AND STAKE FINISH GRADE.
- (B) ALL BOXES WILL BE INSTALLED OR LOCATED A MINIMUM OF 3 FEET FROM THE WIDEST SECTION OF THE APPROACH OF ANY DRIVEWAY, VEHICLE ACCESS OR GARAGE SIDE LOCATION.
- (C) A TRAFFIC RATED BOX AND COVER WILL BE REQUIRED WHEN CONDITIONS IN NOTE B ARE NOT MET OR WHEN DETERMINED BY THE NVE INSPECTOR THAT BOX WILL BE SUBJECTED TO VEHICLE LOADS.
- (D) ALL VAULT LOCATIONS SHALL BE A MINIMUM OF 4-1/2 FEET BEHIND BACK FACE OF CURB ON STREETS WHERE SIDEWALKS ARE NOT IMMEDIATELY INSTALLED 6-1/2 FEET FROM EDGE OF PAVEMENT OR 2 FEET BEHIND PROPERTY LINE WHICHEVER IS GREATER.
- (E) NVE MAY REQUIRE RETAINING WALLS OR GUARDPOST INSTALLATION FOR REQUIRED SAFETY OF FACILITIES.



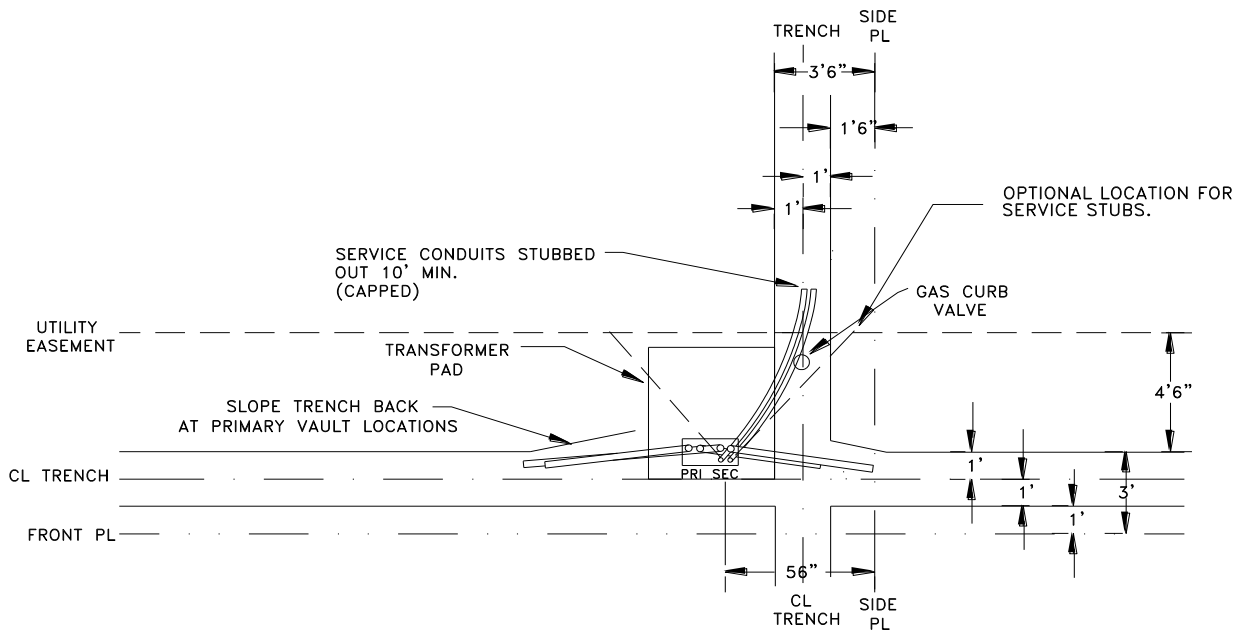
				VOLUME 17 – ENGINEERING & CONSTRUCTION STANDARD		TE0020U
				EQUIPMENT LOCATION DETAILS – RESIDENTIAL		
Drawn:	Eng:	Appr:	Date:			Revision: 4
JVV	MB	DA	04/16			Page 5 of 6

TRANSFORMER PAD LOCATION DETAIL



CONSTRUCTION NOTES:

- (A) CONTRACTOR TO DETERMINE AND STAKE FINISH GRADE.
- (B) MAINTAIN 10 FT. CLEAR LEVEL SPACE IN FRONT OF ALL PADMOUNT EQUIPMENT DOORS.
- (C) NO FENCE, COVER OR STRUCTURE TO BE BUILT WITHIN 3'-0" OR 30" OF TRANSFORMER. REFERENCE TE0040U NOTE: 15
- (D) FOR TRANSFORMER GROUNDING DETAIL SEE GD04U. VOLUME 5, TECHNICAL DATA.
- (E) ALL TRANSFORMER PADS WILL BE INSTALLED A MINIMUM OF 3 FEET FROM THE EDGE OF ANY DRIVEWAY, CURB OR VEHICLE ACCESS.
- (F) ALL PAD LOCATIONS SHALL BE A MINIMUM OF 4-1/2 FEET BEHIND BACK FACE OF CURB ON STREETS WHERE SIDEWALKS ARE NOT IMMEDIATELY INSTALLED 6-1/2 FEET FROM EDGE OF PAVEMENT OR 2 FEET BEHIND PROPERTY LINE WHICHEVER IS GREATER.
- (G) NVE MAY REQUIRE RETAINING WALLS OR GUARDPOST INSTALLATION FOR THE SAFETY OF THE EQUIPMENT
- (H) SECONDARY/SERVICE CONDUITS AT TRANSFORMER LOCATIONS WILL BE STUBBED UP AT 56" MIN. FROM PROPERTY LINE.
- (I) PRIMARY CONDUITS AT TRANSFORMER WILL BE STUBBED UP AT 71".



TRANSFORMER PAD LOCATION DETAIL

				VOLUME 17 – ENGINEERING & CONSTRUCTION STANDARD		TE0020U
				EQUIPMENT LOCATION DETAILS – RESIDENTIAL		
Drawn:	Eng:	Appr:	Date:			Revision: 4
JVV	MB	DA	04/16			Page 6 of 6