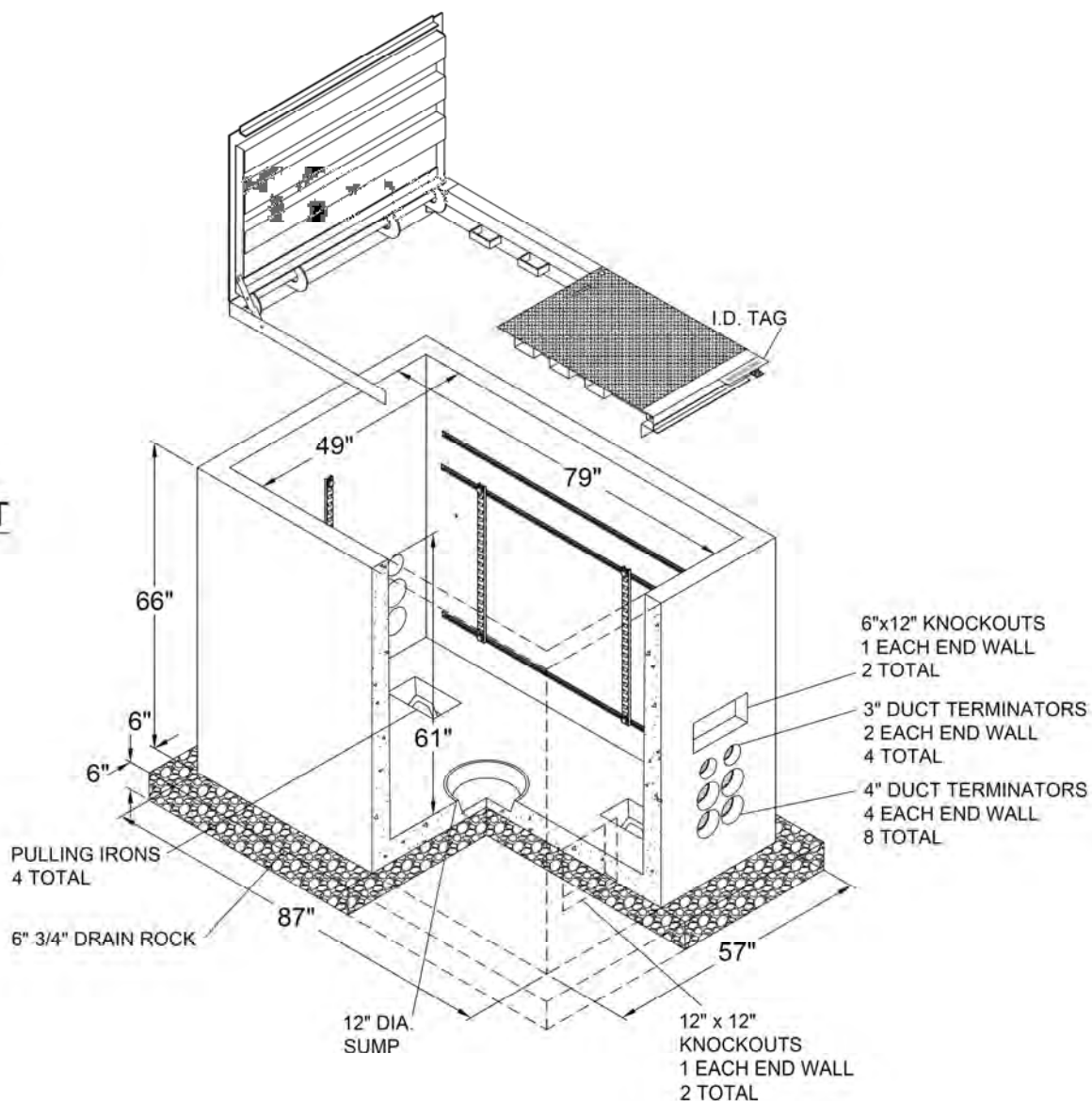


LID "A"

24-1167

557 VAULT

24-1045

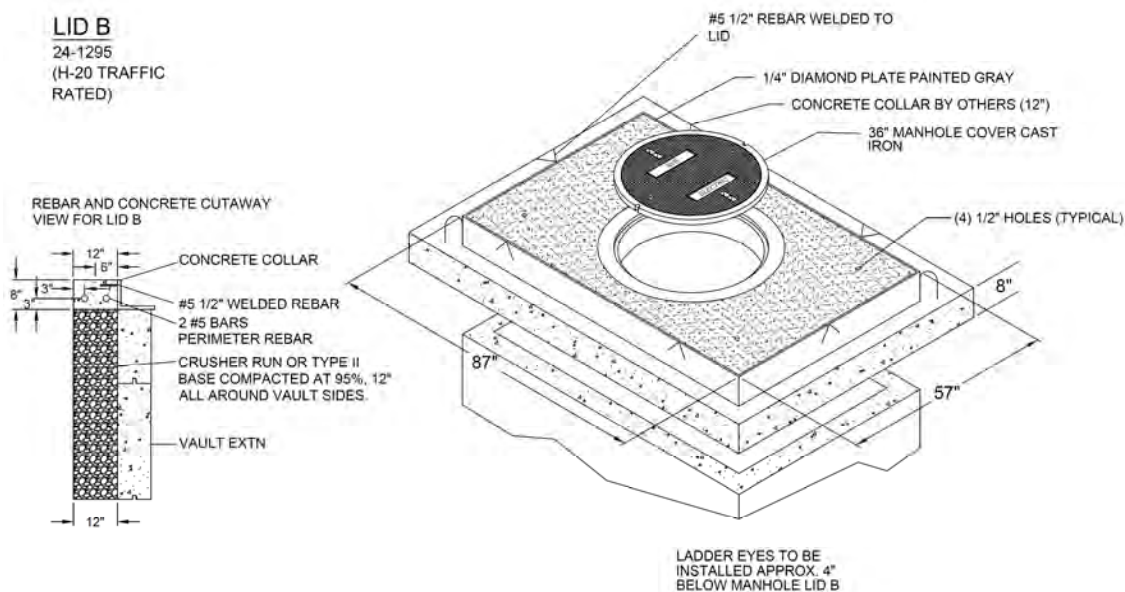


Designers: Maximum conductor information is given in CAB09U, Volume 5.

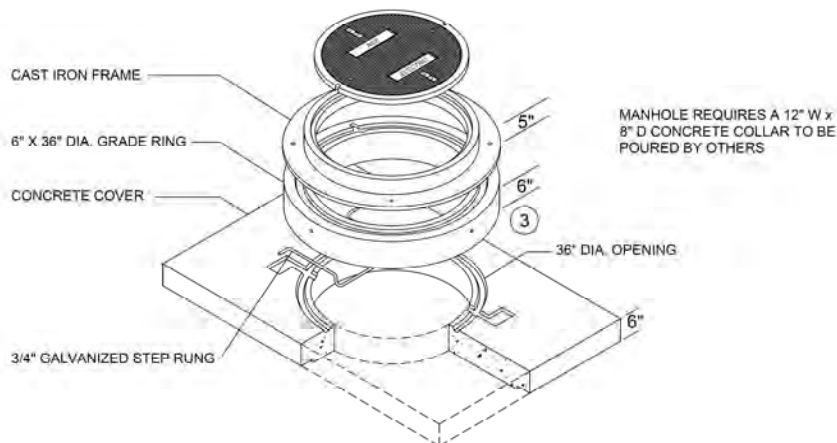
STK#	DESCRIPTION
24-1167	LID A
24-1045	557 Vault
24-1295	LID B
24-1290	LID B-1
24-0050	6" RISER
24-0466	18" EXTENSION

LID B

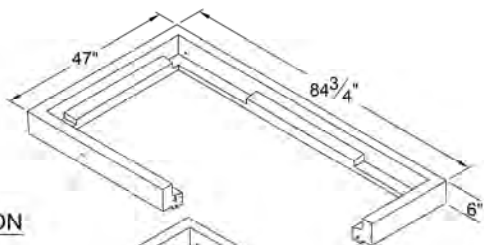
24-1295
(H-20 TRAFFIC
RATED)

**LID B-1**

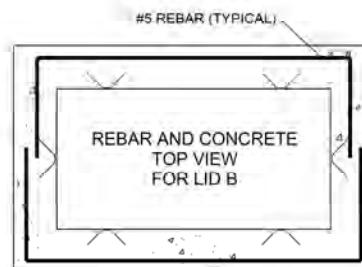
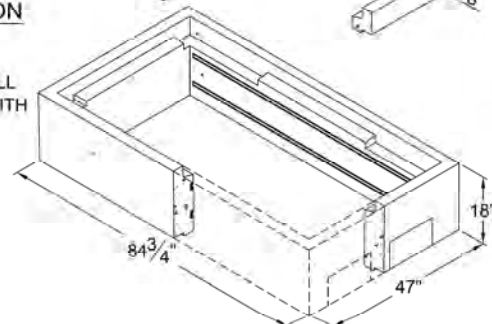
24-1290
(FOR AREAS TO BE
PAVED) (H-20 RATED)

**6" RISER**

24-0050
(OPTIONAL)

**18" EXTENSION**

24-0466
NOTE: 18"
EXTENSION SHALL
BE INSTALLED WITH
LID "B-1"



Volume 17: Electric Service Requirements

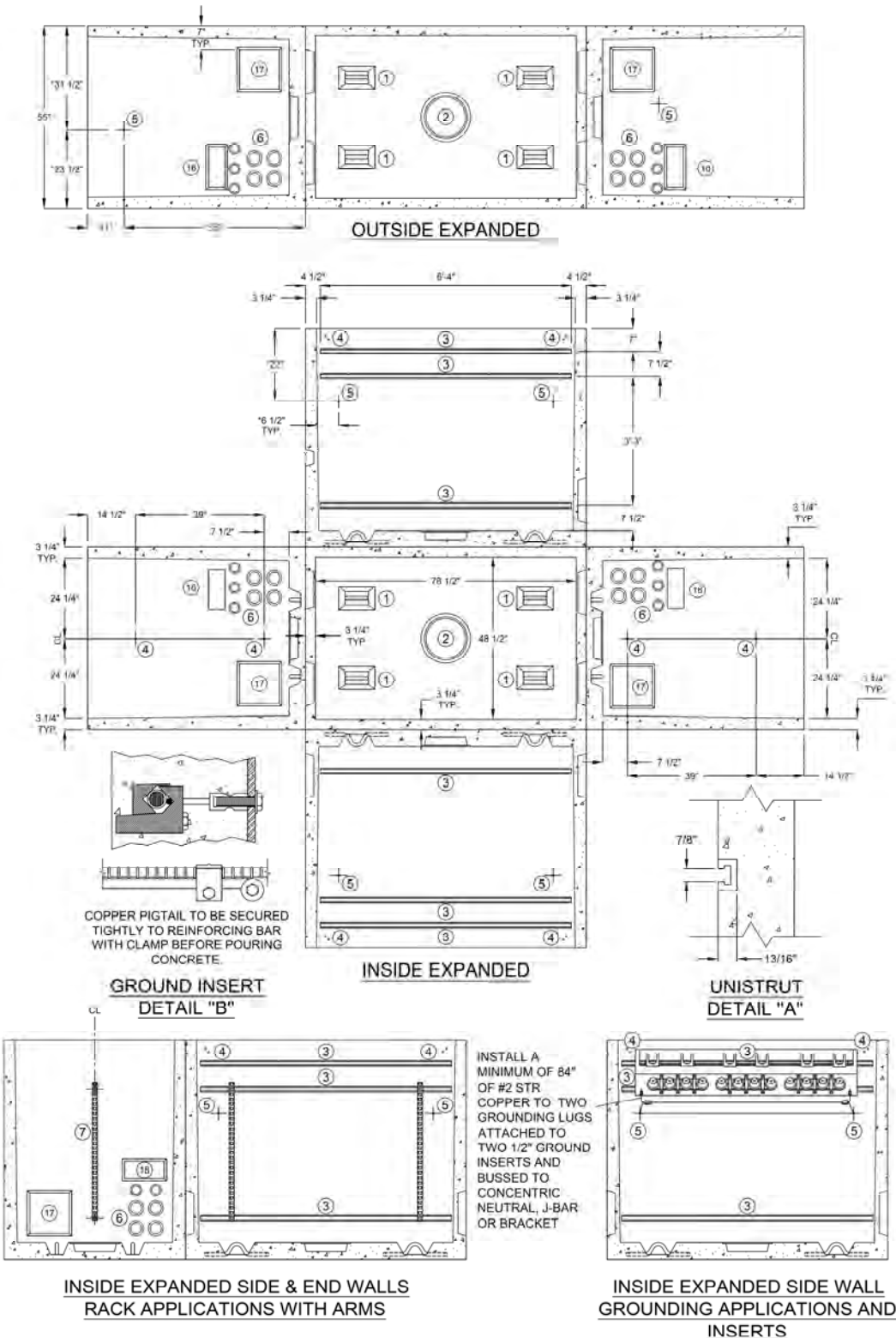
557 Vault Concrete Primary 49" X 79" X 61" I.D.

VB0071U

Drawn:	Eng:	Appr:	Date:
PR	NP	HW	3/25

Revision: 05
Page 2 of 4


EXPANDED VIEWS & GROUNDING GRID INSTALLATION DETAIL



Material List Supplied by Vault Manufacturer		
Description		QTY
1	Pulling Iron	4
2	12" Diameter Sump	1
3	76" Long Unistrut	6
4	1/2" Racking Insert	12
5	1/2" Grounding Insert, 4 Inside - 2 Outside	6
6	3" Duct Terminator (Each End)	4
	4" Duct Terminator	8
7	28 Hole Rack (41 3/4" Long)	6
8	Spring Nut	8
9	1/2 X 1 1/2" Bolt	13
10	1/2" Washer	12
11	1/2" Brass Ground Washer, 1 Top Outside	1
12	15" Cable Steps	6
13	Ladder Up	1
14	Ladder	1
15	Mounting Brackets with Lid "C-1"	4
16	Adjustable Bracket Clips with Lid "B-1"	2
17	12" X 12" Knockout	2
18	6" X 12" Knockout	2

557 VAULT CONSTRUCTION NOTES

- Vault to be used for H-20 traffic design loading. All live loads shall be for HS-20-44 (MS-18) as per AASHTO Standard Specification.
Note: If lid B-1 is used a minimum of 12" of vault cover is required.
- Vault excavation and backfill to conform to NVE. Specification SUB01X.
- Butyl rubber or neoprene gasket seal required between vault sections and/or extensions.
- Additional 6" extension needed if vault is placed in or adjacent to collector or major street right of way.
- Uni-strut and 1/2" inserts will be cast into vault. (See Details A/B).
- Lids to be marked "NVE ELECTRIC".
- All weights to be clearly marked.
- Cable steps: 6-15" steps are supplied with vault.
- Grounding: See expanded view for grounding applications and inserts.
- Ladder and ladder-up required, See Standard VB0105U.
- Ladder mounting eyes to be installed.

				Volume 17: Electric Service Requirements		VB0071U
				557 Vault Concrete Primary 49" X 79" X 61" I.D.		
Drawn:	Eng:	Appr:	Date:			Revision: 05
PR	NP	HW	3/25			Page 4 of 4