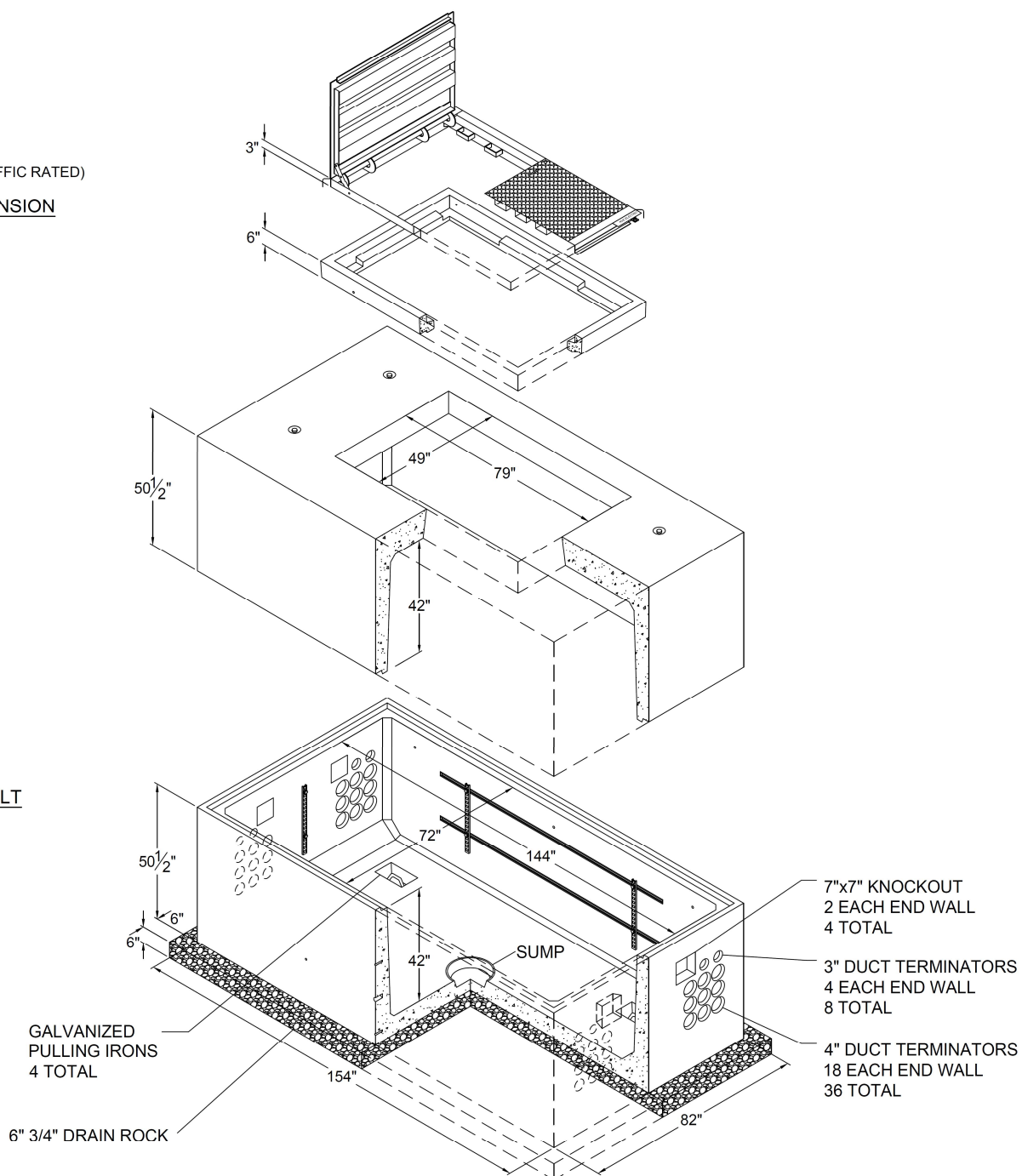



LID A
24-1167
(NON TRAFFIC RATED)

6" EXTENSION
24-0050



Designers: Maximum conductor information is given in CAB09U, Volume 5.

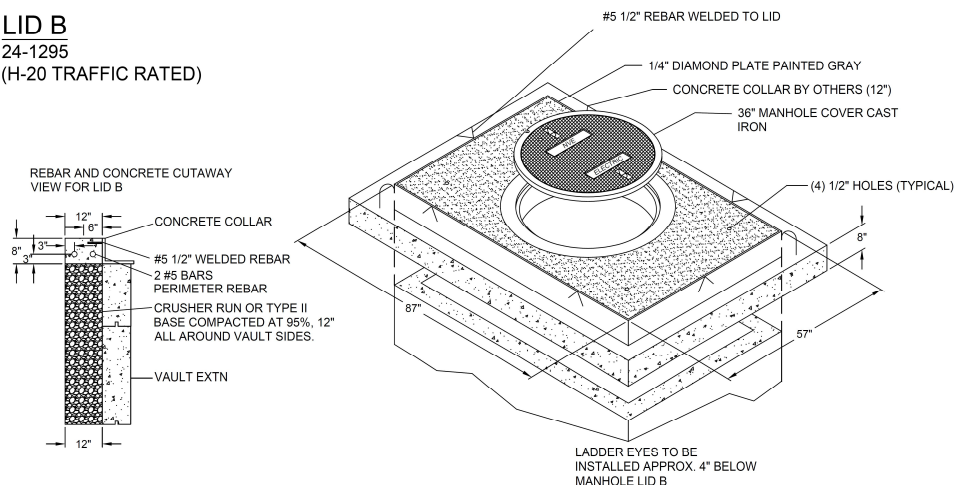
STK#	DESCRIPTION
24-1167	LID A
24-1295	LID B
24-1305	LID B -1
24-1060	612 VAULT
24-0050	6" EXTENSION
24-0466	18" EXTENSION

				Volume 17: Electric Service Requirements		VB0085U
				612 Vault Concrete Primary 6' X 12' X 7' I.D.		
Drawn:	Eng:	Appr:	Date:			Revision: 8
PR	NP	HW	3/25			Page 1 of 6

LID B

24-1295

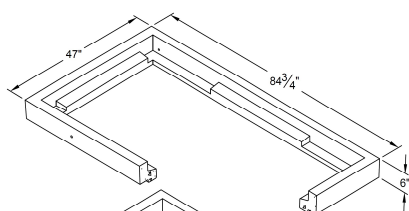
(H-20 TRAFFIC RATED)



6" RISER

24-0050

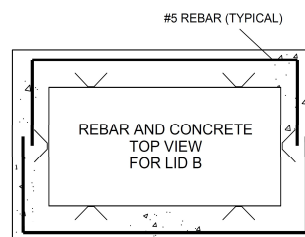
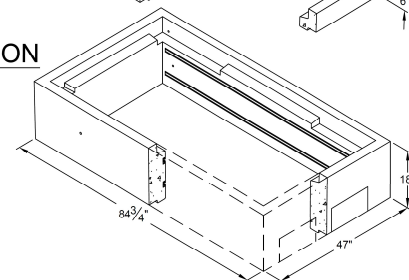
(OPTIONAL)



18" EXTENSION

24-0466

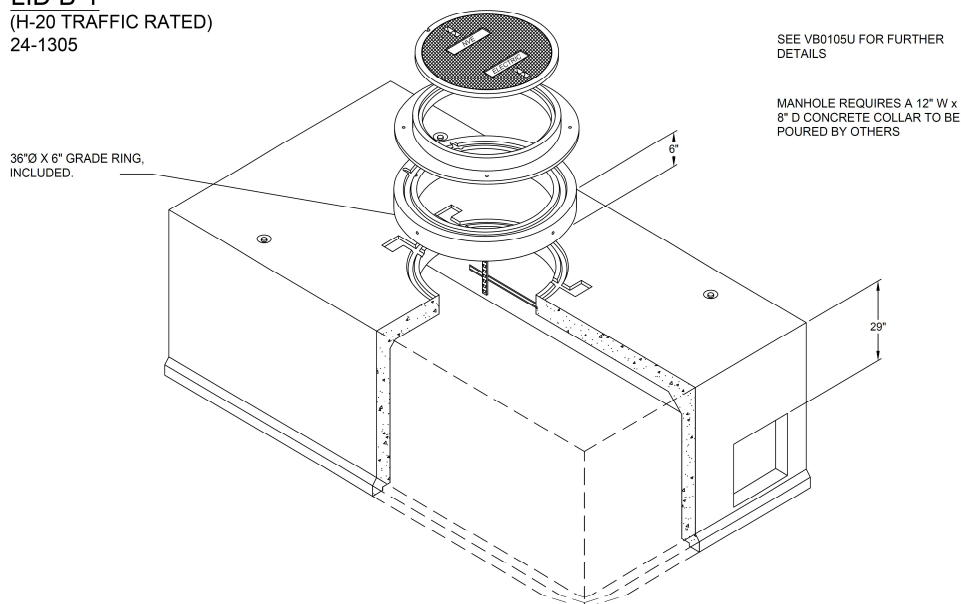
(OPTIONAL)



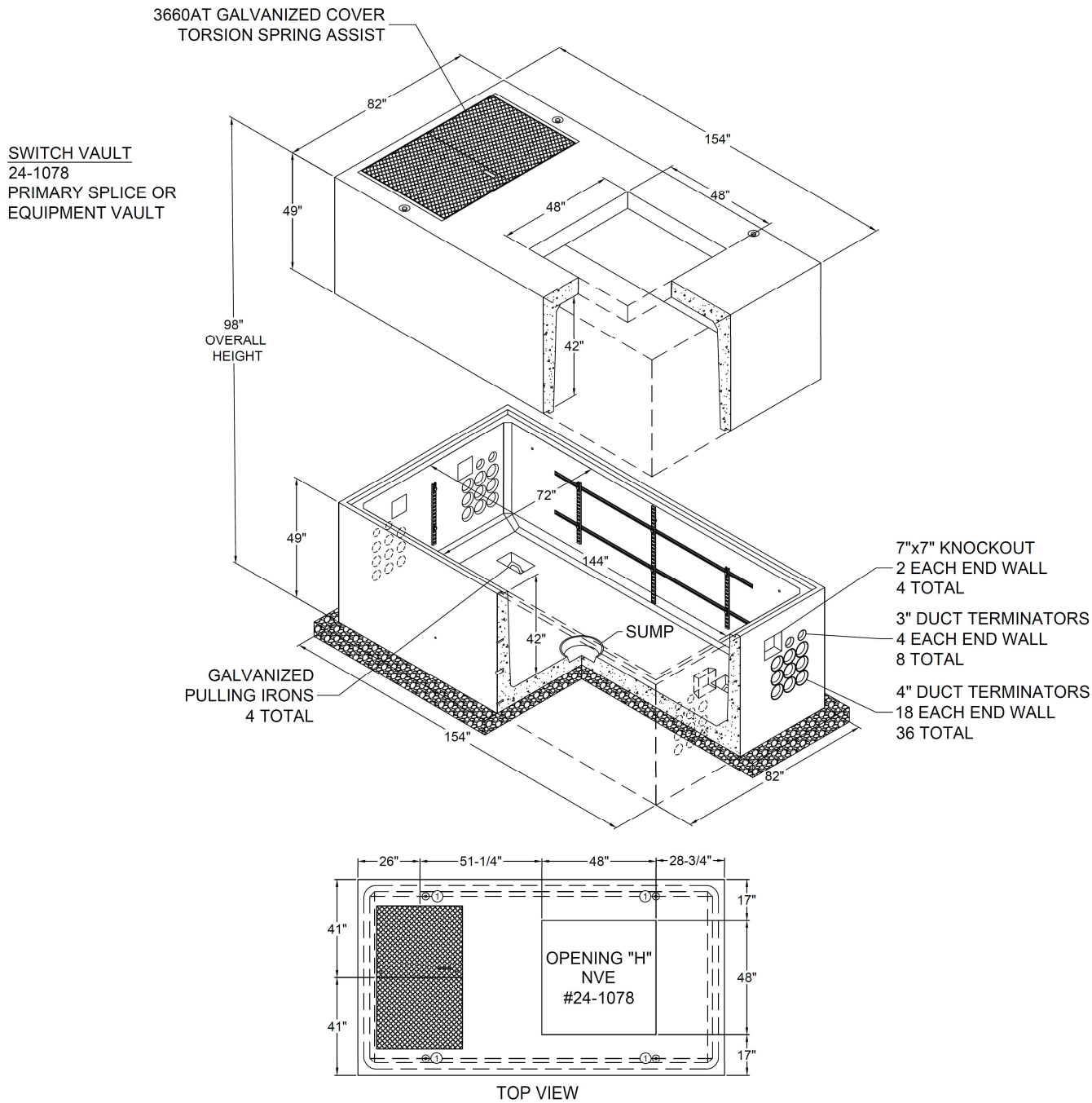
LID B-1

(H-20 TRAFFIC RATED)

24-1305



SWITCH VAULTS



Volume 17: Electric Service Requirements

612 Vault Concrete Primary 6' X 12' X 7' I.D.

VB0085U

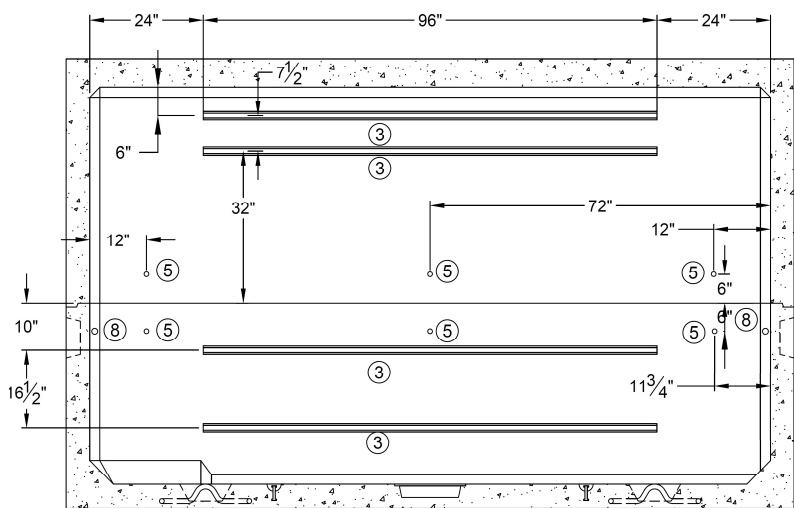
Revision: 8

Page 3 of 6

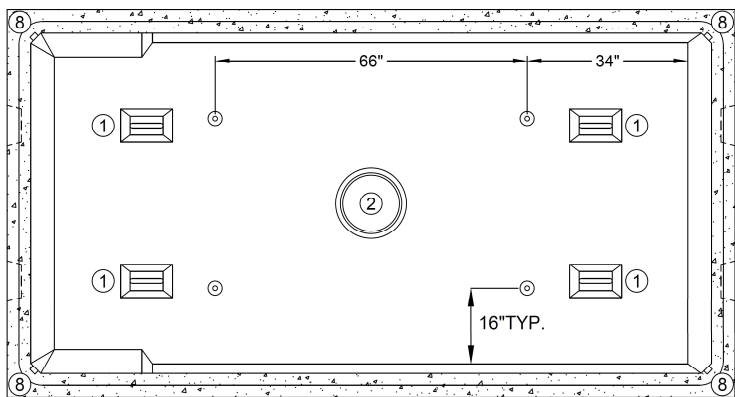
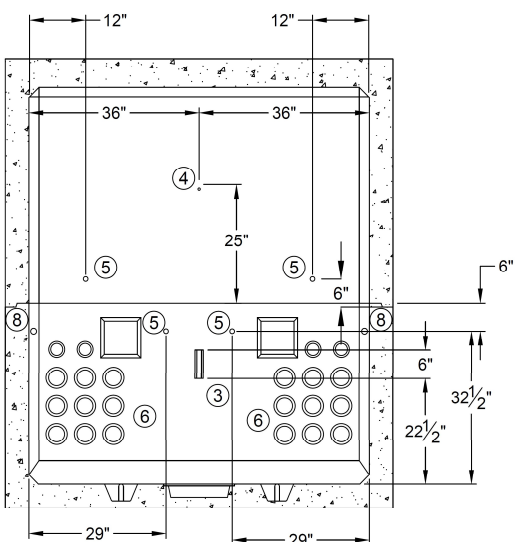
Drawn:	Eng:	Appr:	Date:
PR	NP	HW	3/25

612 VAULT EXPANDED VIEWS

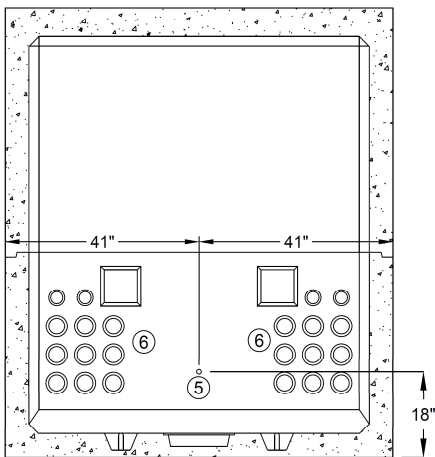
EXPANDED INSIDE TOP SIDE VIEW



EXPANDED INSIDE TOP
AND BOTTOM END VIEW

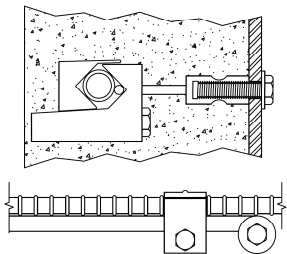


EXPANDED INSIDE BOTTOM SIDE VIEW



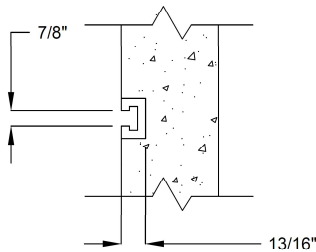
OUTSIDE BOTTOM & TOP END VIEW

GROUNDING INSERTS



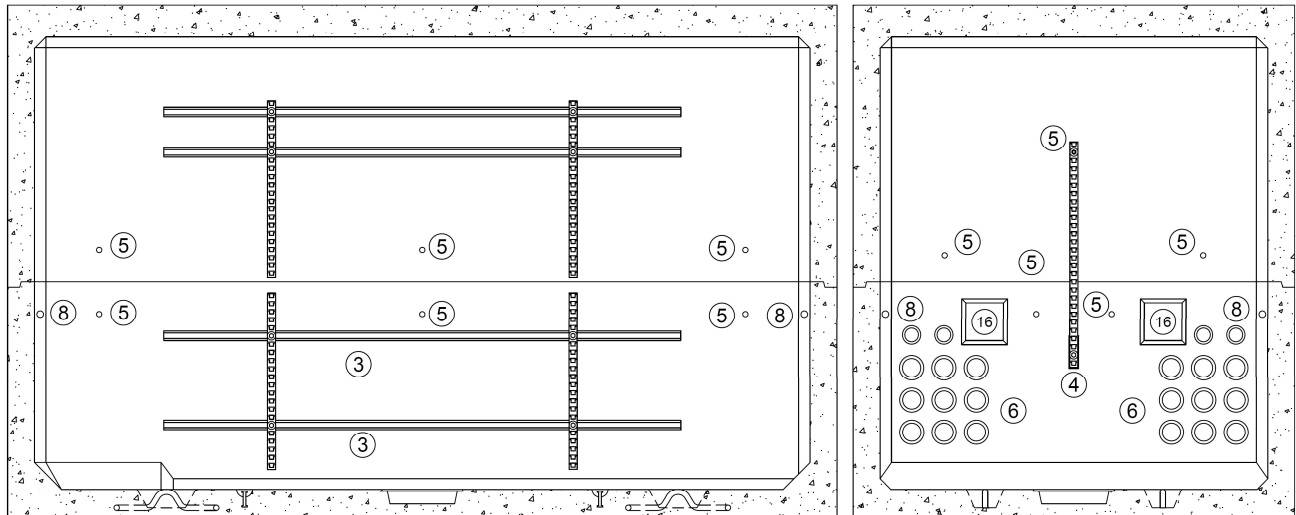
COPPER PIGTAIL TO BE SECURED
TIGHTLY TO REINFORCING BAR
WITH CLAMP BEFORE POURING
CONCRETE.

GROUND INSERT
DETAIL "B" NTS



UNISTRUT
DETAIL "A" NTS

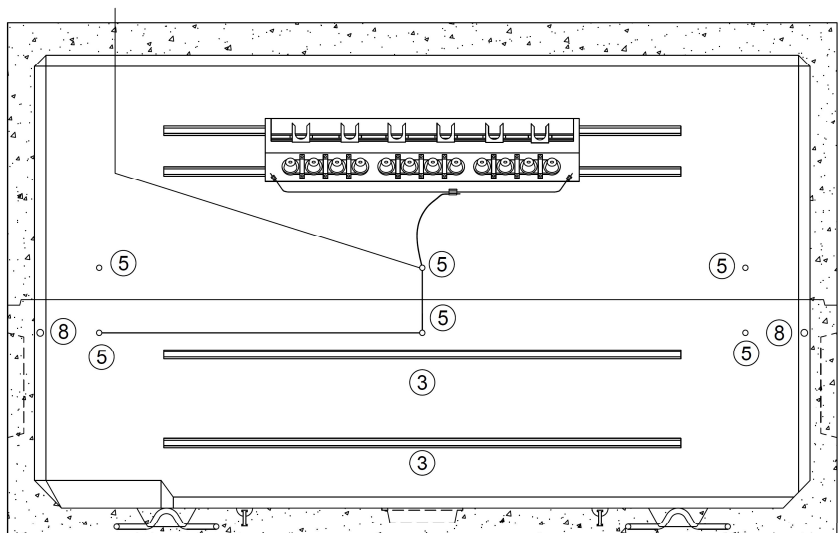
GROUNDING GRID INSTALLATION DETAIL




INSIDE EXPANDED SIDE & END WALLS
RACK APPLICATIONS WITH ARMS

SPLICE (J-BAR) ONLY: INSTALL A MINIMUM OF 14FT OF 2/0 COPPER TO THREE GROUNDING LUGS ATTACHED TO THREE 1/2" GROUNDING INSERTS AND BUS TO CONCENTRIC NEUTRAL, J-BAR OR BRACKET.

EQUIPMENT INSTALLATION: INSTALL 45' OF 2/0 COPPER GROUND GRID, TIE TO ALL SECTIONS AND LOOP THROUGH 10 GROUNDING LUGS ATTACHED TO 1/2" GROUNDING INSERTS AROUND VAULT AND BUS TO TRANSFORMER, CONCENTRIC NEUTRAL, J-BAR OR BRACKET.




INSIDE EXPANDED SIDE WALLS
GROUNDING APPLICATIONS AND INSERTS

				Volume 17: Electric Service Requirements		VB0085U
				612 Vault Concrete Primary 6' X 12' X 7' I.D.		
Drawn:	Eng:	Appr:	Date:			Revision: 8
PR	NP	HW	3/25			Page 5 of 6

MATERIAL LIST supplied by Vault Manufacturer		
	DESCRIPTION	QTY
1	Pulling iron	4
2	12" diameter sump	1
3	96" long unistrut side walls	8
	6" long unistrut end walls	2
4	1/2" racking insert	2
5	1/2" grounding insert, 20 inside - 2 outside	22
6	3" duct terminator 4 (each end)	8
	4" duct terminator 18 (each end)	36
7	22-hole rack (32 3/4" long) side top & bottom	8
	28-hole rack (41 3/4" long) end	2
8	5/8" inserts for wire training corners	4
9	Spring nut	18
10	1/2 x 1 1/2" bolt	21
11	1/2" washer	20
12	1/2" brass ground washer, 1 top outside	1
13	15" Cable Step	12
14	Ladder up	1
15	Ladder	1
16	7" x 7" knockout	4

612 VAULT CONSTRUCTION NOTES:

- Vault to be used for H-20 traffic design loading. All live loads shall be for HS-20 - 44 (MS-18) as per AASHTO standard Specification. If lid B or B-1 is used, a minimum of 12" of vault cover is required.
- Vault excavation and backfill to conform to NVE Specification SUB01X.
- Butyl rubber or neoprene gasket seal required between vault sections and/or extensions.
- A 6" extension is installed on all vaults for elevation and lid options.
- Uni-strut and 1/2" inserts will be cast into vault. (See Details A/B).
- Lids to be marked "NVE ELECTRIC".
- All weights to be clearly marked.
- Grounding: See expanded view for grounding applications and inserts.
- 2/0 CU (# 17-0910) grounding grid is needed if equipment is placed in vault. Wire needs to be ordered separately (approx. 42').
- Ladder and ladder-up required. See NVE Standard VB0105U. Ladder mounting eyes to be installed on lids A and B.
- Vault has different top sections and covers depending on the stock number and usage requested.
- Ladder, knockouts, strut, racking, and duct terminators per Current NVE standards.
- Design load: Incidental H-20 traffic suitable for off street locations away from high density traffic.
- Complete design and product information contact Jensen Precast.
- Dimensions may vary from drawing: Contact the manufacturer for exact dimensions.
- 24-1305 Includes a 6" grade ring and manhole.
- Installation: Box to be placed on 6" of 3/4" clean drain rock.
- Lid is not centered coordinated positioning with NVE inspector.

				Volume 17: Electric Service Requirements		VB0085U
				612 Vault Concrete Primary 6' X 12' X 7' I.D.		
Drawn:	Eng:	Appr:	Date:			Revision: 8
PR	NP	HW	3/25			Page 6 of 6