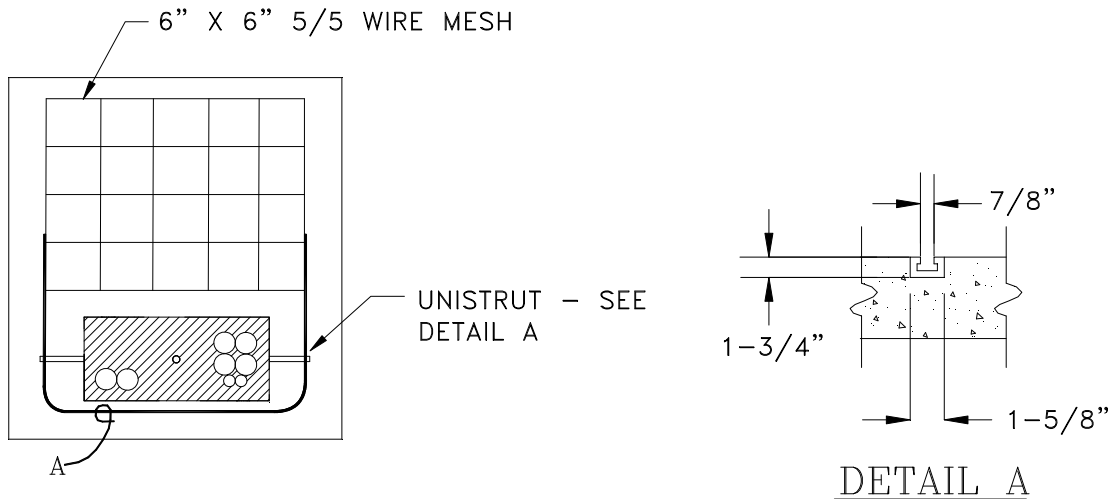


CONSTRUCTION NOTES:

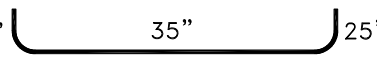
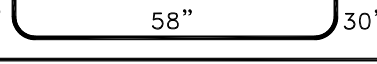
Refer to Construction Standards PE0001U and PE0003U for spacings and sizing details.

- NVE Stock # 24-0692 supports a max. weight of 2000 lbs.
- NVE Stock # 24-0694 supports a max. weight of 5700 lbs.
- Field cast pads as follows:
 1. Compact and level area of proposed pad.
 2. Pad location, forms, layout must be inspected and approved by NVE prior to pouring concrete (3000 psi at 28 days).
 3. Shaded 'conduit' areas to be free and clear of concrete.
 4. Reinforcing steel to conform to ASTM 615, #4 rebar will be grade 60.
 5. Top of pad shall receive a smooth and level trowel finish. Corners and edges shall be rounded or beveled.



TOP VIEW

NON-PREFERRED: POURED IN PLACE PADS

| REINFORCEMENT STEEL | | | | | | |
|------------------------------------|------|---|----------------|--------|--------------|--------|
| PAD | UNIT | CONFIGURATION | # REQ'D. | LENGTH | TOTAL LENGTH | WEIGHT |
| 24-0692 (1 PHASE 25-167 KVA) | A | 25"  35" 25" | 1 | 7'-1" | 7'-1" | 4.7 |
| | | CONCRETE APPROX. = .5 CU. YD. | TOTAL #4 REBAR | | 7'-1" | 4.7 |
| 24-0694 (3 PHASE 75-500 KVA) | A | 30"  58" 30" | 1 | 9'-10" | 9'-10" | 6.6 |
| | | CONCRETE APPROX. = .75 CU. YD. | TOTAL #4 REBAR | | 9'-10" | 6.6 |

| | | | | | |
|---|---|-------|-------|----------------------------|---------------|
|  | VOLUME 17 – ENGINEERING & CONSTRUCTION STANDARD | | | | PAD01X |
| | TRANSFORMER/SWITCH PAD – FIELD CAST REQUIREMENTS | | | | |
| Drawn: | Eng: | Appr: | Date: | | |
| RN | MB | DA | 9/11 | Revision: 5 Page 1 of 1 | |