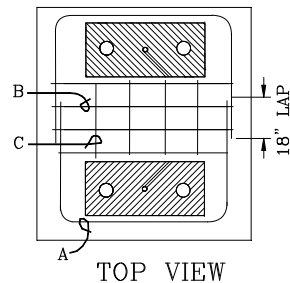


CONSTRUCTION NOTES:


Refer to Construction Standards PE0012U through PE0015U for spacing and sizing details.

- NVE Stock #24-0726 supports a max. weight of 2600 lbs.
- NVE Stock #24-0728 supports a max. weight of 2800 lbs.
- NVE Stock #24-0732 supports a max. weight of 3500 lbs.
- NVE Stock #24-0736 supports a max. weight of 3800 lbs.
- Field cast pads as follows:
 1. Compact and level area of proposed pad.
 2. Pad location, forms, layout must be inspected and approved by NVE prior to pouring concrete (3000 psi at 28 days).
 3. Shaded 'conduit' areas to be free and clear of concrete.
 4. Reinforcing steel to conform to ASTM 615, #4 rebar will be grade 60.
 5. Top of pad shall receive a smooth and level trowel finish. Corners and edges shall be rounded or beveled.



NON-PREFERRED: POURED IN PLACE PADS

REINFORCEMENT STEEL						
PAD	UNIT	CONFIGURATION	# REQ'D.	LENGTH	TOTAL LENGTH	WEIGHT
24-0726 PE0012U	A	42" U 48" U 42"	2	11'-0"	22'-0"	22.9
	B	52"	4	4'-4"	17'-4"	18.1
	C	26"	4	2'-2"	8'-8"	9.0
	CONCRETE APPROX. = .35 CU. YD.			TOTAL #5 REBAR	48'-0"	49.9
24-0728 PE0013U	A	42" U 62" U 42"	2	12'-2"	24'-4"	25.4
	B	65"	4	5'-5"	21'-8"	22.6
	C	26"	4	2'-2"	8'-8"	9.0
	CONCRETE APPROX. = .4 CU. YD.			TOTAL #5 REBAR	54'-8"	57.01
24-0732 PE0014U	A	42" U 76" U 42"	4	13'-4"	26'-8"	27.8
	B	18" U 79" U 18"	4	6'-7"	26'-4"	27.5
	C	26"	6	2'-2"	13'-0"	13.6
	CONCRETE APPROX. = .65 CU. YD.			TOTAL #5 REBAR	66'-0"	68.9
24-0736 PE0015U	A	42" U 86" U 42"	4	14'-2"	56'-8"	59.1
	B	89"	4	7'-5"	29'-8"	30.9
	C	26"	8	2'-2"	17'-4"	18.1
	CONCRETE APPROX. = .75 CU. YD.			TOTAL #5 REBAR	103'-8"	108.1

	VOLUME 17 – ENGINEERING & CONSTRUCTION STANDARD	PAD03X								
	3Ø SWITCH PAD FIELD CAST REQUIREMENTS									
<table border="1" style="width: 100%; border-collapse: collapse;"> <tr> <td style="width: 25%;">Drawn:</td> <td style="width: 25%;">Eng:</td> <td style="width: 25%;">Appr:</td> <td style="width: 25%;">Date:</td> </tr> <tr> <td style="text-align: center;">RN</td> <td style="text-align: center;">MB</td> <td style="text-align: center;">DA</td> <td style="text-align: center;">9/11</td> </tr> </table>	Drawn:	Eng:	Appr:	Date:	RN	MB	DA	9/11		Revision: 4 Page 1 of 1
Drawn:	Eng:	Appr:	Date:							
RN	MB	DA	9/11							