

1. Table of Contents


1.	Table of Contents	1
2.	Purpose	1
3.	General Installation Requirements	1

2. Purpose

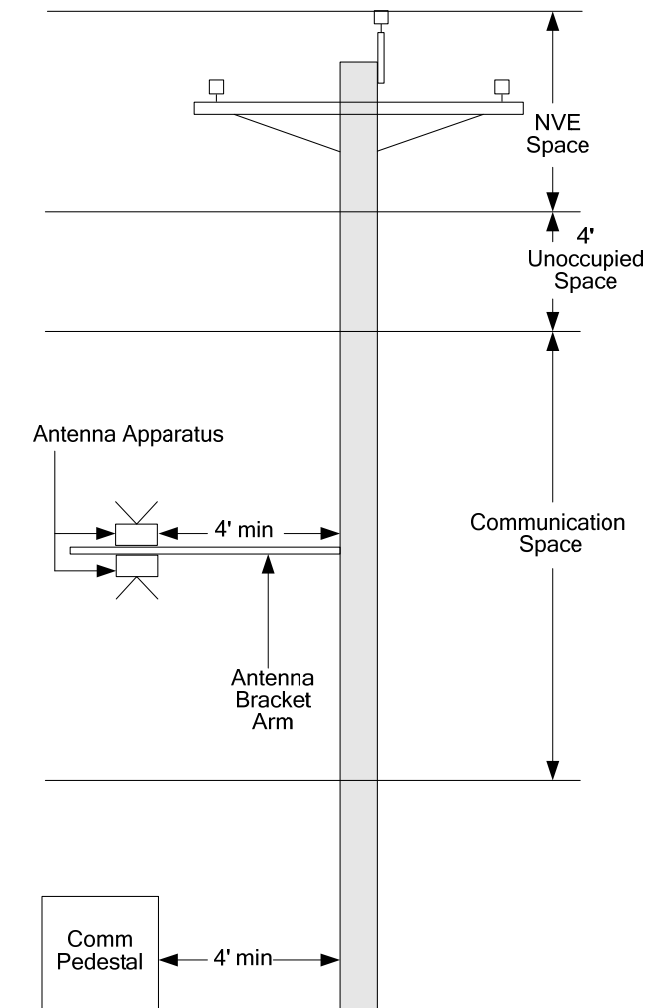
The following list covers the basic requirements for a communications antenna site installation on a wood distribution power pole; it does not include all requirements for installation.

3. General Installation Requirements

1. Installation is on a "clean" pole. The pole is not encumbered by an air break switch, transformers, capacitor banks, regulators, dead-end guys, or a three-phase dip. A guy-stub pole may be used with prior approval.
2. Zoning, clearance and building permit(s), where required, are obtained by customer.
3. Estimated electrical load information of the installation shall be provided to NVE.
4. A structural analysis report stamped by a Nevada Civil P.E. shall be provided to NVE. Contact the NVE Joint Use Department for a complete list of the structural analysis requirements.
5. All work shall be done by qualified linemen except within the communications space. Only NVE or NVE qualified workers may enter or work in the NVE supply space.
6. Only the antenna and mounting bracket or cross arm used to stand the antenna off from the pole and the riser conduit for the antenna cables shall be allowed on the pole. All other ancillary equipment shall be located within a separate pedestal.
7. Communications equipment pedestals must not block access to the pole. The preferred location is nearby on adjacent private property. Conduits shall be run underground between the pole and the cabinet. **The absolute minimum distance from the communications pedestal to the pole is 4 feet.**
8. The telecommunications equipment owner shall incur the cost of removing the equipment from a pole in the event that the equipment is abandoned.
9. The telecommunications company must notify NVE at least 45 days in advance when an outage will be required to service an installed antenna.
10. A disconnect switch with a visible air break on the electrical service to the antenna site shall be provided to allow the antenna, pedestal, and ALL other customer owned associated telecommunications equipment at the site to be de-energized. This switch shall be installed by the customer and will be used to de-energize all customer owned equipment at the site in the event NVE deems it necessary to do so in order to operate the electric system or work on nearby facilities. NVE Metering Department **must** be consulted well in advance for approval of the location of the switch. The installation shall be required to meet all other applicable NVE Standards.


				Electric Service Requirements		RE-7
				Telecommunication Antenna Attachment to Wood Distribution Pole		
Drawn:	Eng:	Appr:	Date:			Revision: 0A
DC	SC	DA	02/14			Page 1 of 2

Poles: Attachments



Notes:

1. **ALL** installations must be approved by NVE, including **but not limited to** the antenna, the mounting arm and bracket, and the pedestal.
2. Customer to provide and install all materials.
3. Antenna shall be installed within the communications space on wood distribution poles.
4. Under no circumstances shall anyone other than NVE qualified workers enter the NVE supply space.
5. Only one antenna assembly shall be mounted on the antenna bracket or mounting arm. The assembly may contain multiple antennas, but the distance from the pole to the closest point of the antenna assembly shall be no less than 4 feet
6. Metal bracket arms shall be self-supporting and bonded to pole ground with a #6 S.D. bare copper conductor. If no pole ground is present, bracket shall be grounded with #6 soft-drawn solid copper to a minimum 6' x 1/2" copper-clad ground rod driven into ground at base of the pole; the first 8' of ground wire from base of pole to be covered with Wood, PVC or HDPE wire molding. All antenna support arms must be attached such that they do not encroach into the climbing space. NVE must approve all bracket/arm designs and all designs must accommodate 100% No-Fall climbing practices adopted by NVE.
7. Communication line clearances shall conform to the requirements of the latest edition of the NESC.

				Electric Service Requirements		RE-7
				Telecommunication Antenna Attachment to Wood Distribution Pole		
Drawn:	Eng:	Appr:	Date:			Revision: 0A
DC	SC	DA	02/14			Page 2 of 2