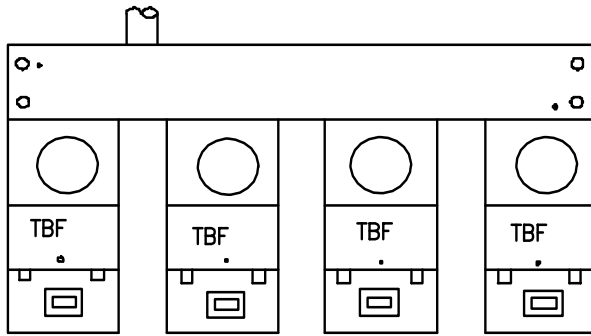
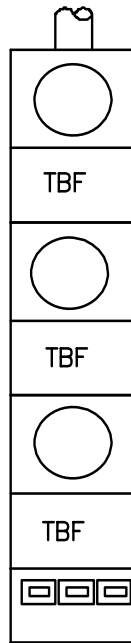


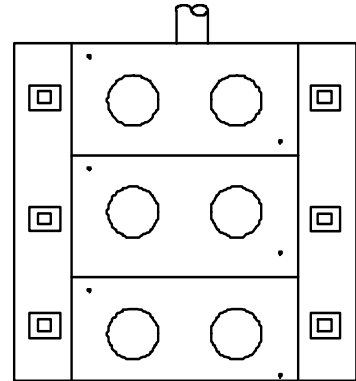
Metering Equipment: Installation Requirements



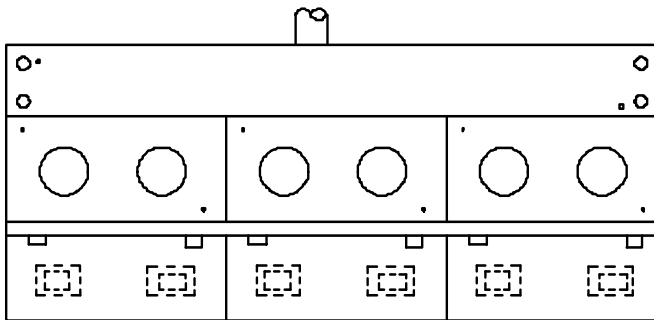
**FIGURE 1
COMMERCIAL**



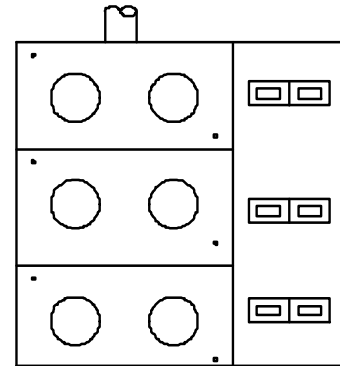
**FIGURE 2
COMMERCIAL**



**FIGURE 3
RESIDENTIAL**




**FIGURE 4
RESIDENTIAL**



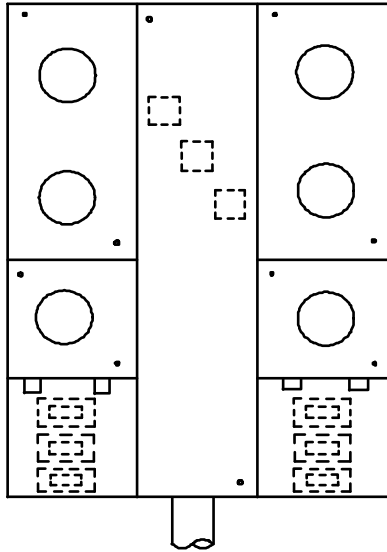
**FIGURE 5
RESIDENTIAL**

OVERHEAD INSTALLATIONS

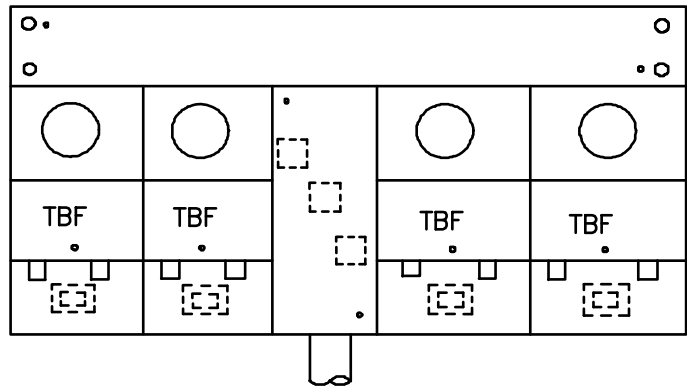
TBF – Test Bypass Facilities

				Electric Service Requirements		RPI-28
				<h3>Typical Meter Arrangements</h3>		
Drawn:	Eng:	Appr:	Date:			Revision: 1
MS	MS	DA	12/06			Page 1 of 2

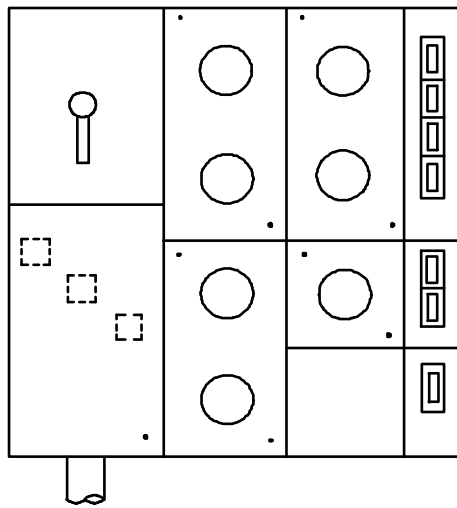
Metering Equipment: Installation Requirements



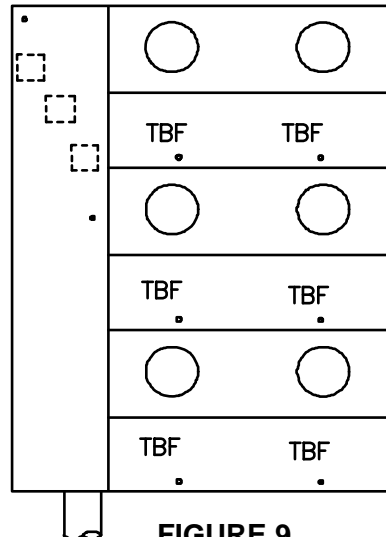
**FIGURE 6
RESIDENTIAL**



**FIGURE 7
COMMERCIAL**



**FIGURE 8
RESIDENTIAL**




**FIGURE 9
COMMERCIAL**

UNDERGROUND INSTALLATIONS

TBF – Test Bypass Facilities

NOTES:

1. Refer to Standards RPI-2 and RPI-G for meter clearances and general metering requirements.
2. See local codes and ordinances for requirements of main switches.
3. NVE will secure termination section with a Mitey Lock security device or an approved locking/sealing device and an NVE seal, as appropriate.
4. Each meter socket shall be marked to identify the residential or commercial unit it serves. Refer to RPI-G for specific marking requirements.

				Electric Service Requirements		RPI-28
				Typical Meter Arrangements		
Drawn:	Eng:	Appr:	Date:			Revision: 1
MS	MS	DA	12/06			Page 2 of 2