

Metering Equipment: Installation Requirements

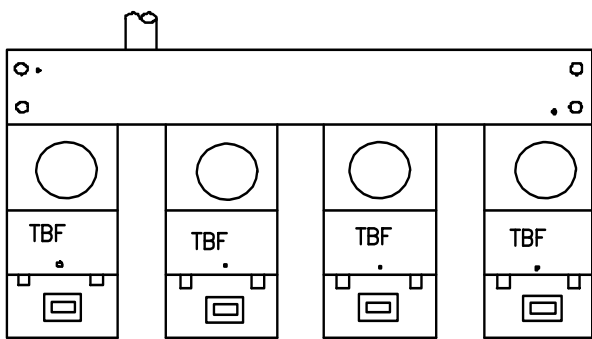


FIGURE 1
COMMERCIAL

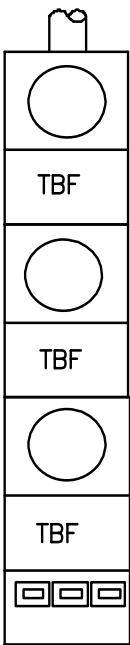


FIGURE 2
COMMERCIAL

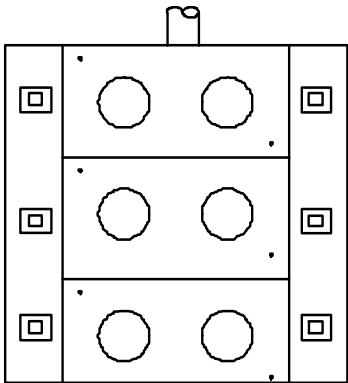


FIGURE 3
RESIDENTIAL

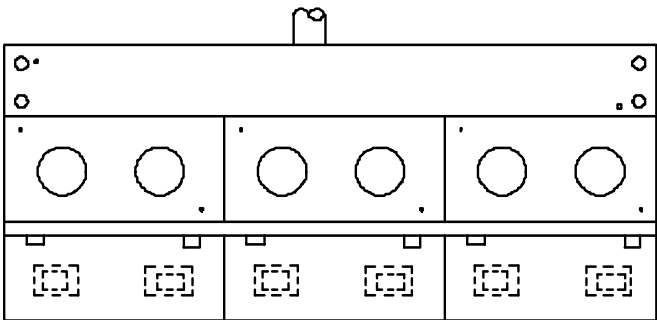


FIGURE 4
RESIDENTIAL

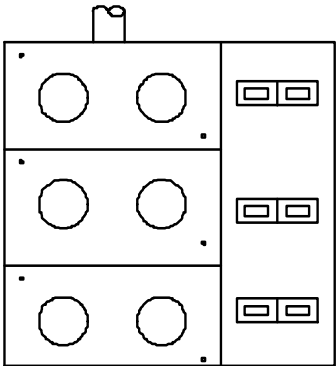
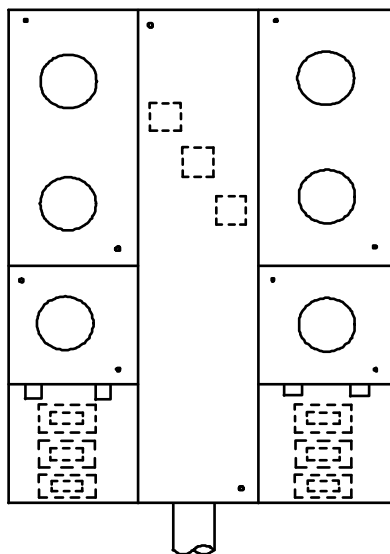


FIGURE 5
RESIDENTIAL

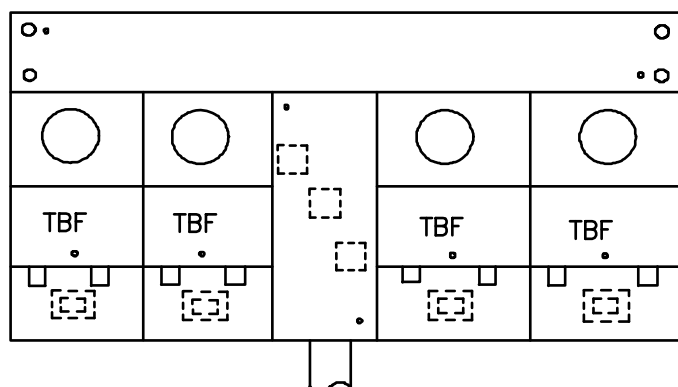
OVERHEAD INSTALLATIONS

TBF – Test Bypass Facilities

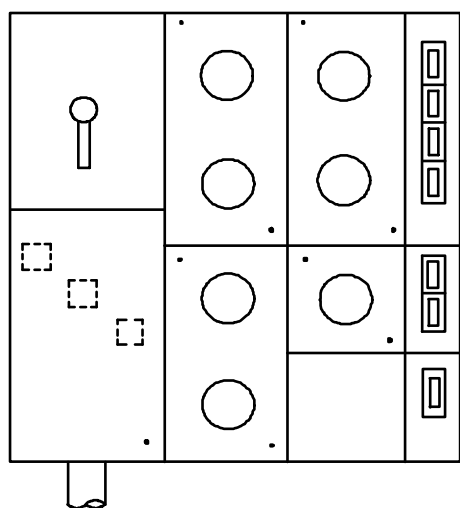
Metering Equipment: Installation Requirements



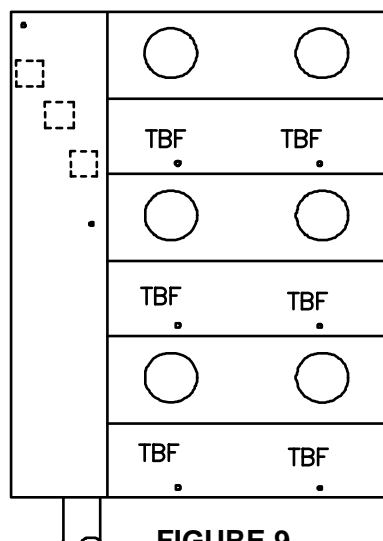
**FIGURE 6
RESIDENTIAL**



**FIGURE 7
COMMERCIAL**



**FIGURE 8
RESIDENTIAL**




**FIGURE 9
COMMERCIAL**

UNDERGROUND INSTALLATIONS

TBF – Test Bypass Facilities

NOTES:

1. Refer to Standards RPI-2 and RPI-G for meter clearances and general metering requirements.
2. See local codes and ordinances for requirements of main switches.
3. NVE will secure termination section with a Mitey Lock security device or an approved locking/sealing device and an NVE seal, as appropriate.
4. Each meter socket shall be marked to identify the residential or commercial unit it serves. Refer to RPI-G for specific marking requirements.

				Electric Service Requirements		RPI-28
				Typical Meter Arrangements		
Drawn:	Eng:	Appr:	Date:			Revision: 1
MS	MS	DA	12/06	Page 2 of 2		