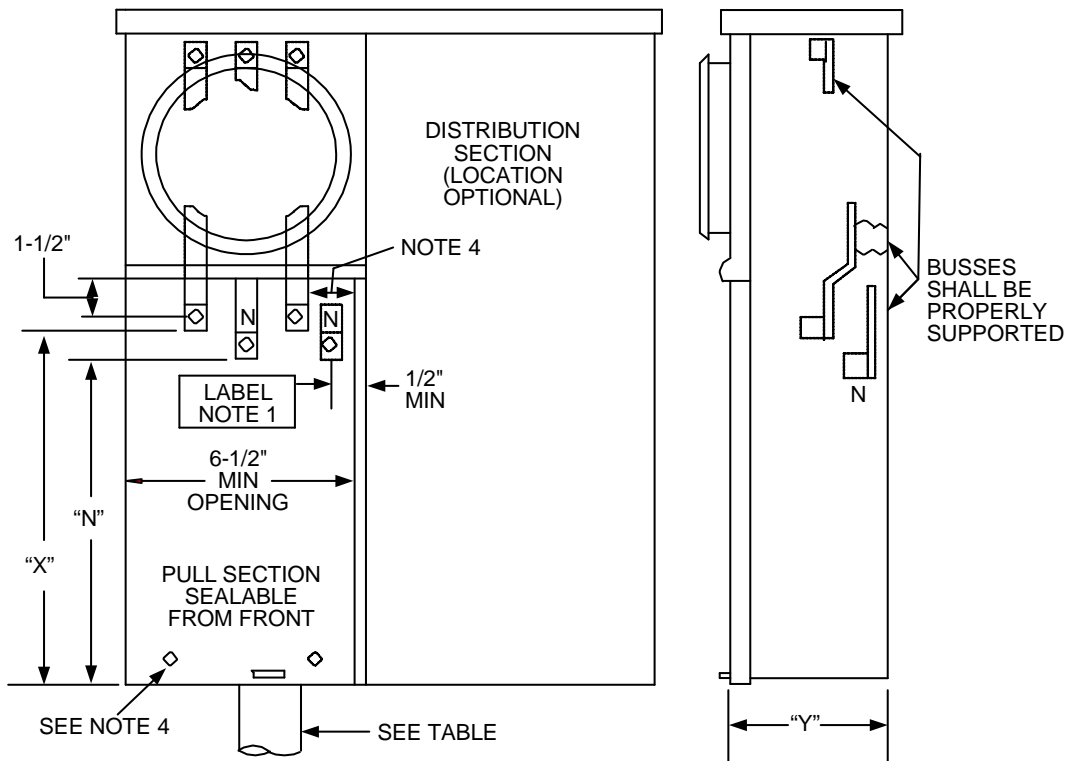


Metering Equipment: Material Requirements




Maximum Ampacity	Lugs to Accept AL Conductor Size	Required Set Screws	"X" Min. Dim.	"N" Min. Dim.	"Y" Min. Dim.	Conduit Range
125	#4, 2/0 AWG	Allen Screw	8"	6"	4"	2-1/2" – 3"
225	#4, 2/0 AWG	Allen Screw	11"	8-1/2"	5-1/2"	2-1/2" – 3"

All dimensions shown are in inches.


NOTES:

1. This equipment may be constructed for overhead, underground, or for combination overhead/underground service applications. When constructed as an OH/UG device, a yellow caution label (2" x 3" minimum) shall be installed below the terminations in the pull section reading "CAUTION: BUS ENERGIZED AT ALL TIMES".
2. Provide a bonding screw or jumper if the neutral terminal is insulated from the enclosure
3. A minimum, radial clearance of 1-1/2 inches shall be provided between hot bus terminals and ground or neutral surfaces.
4. Termination section cover shall be removable and sealable and have provisions for the installation of securing screw on the front of the panel.

				Electric Service Requirements		RPM-1
				Residential Combination Meter Panel: 225A Maximum		
Drawn:	Eng:	Appr:	Date:			Revision: 1
DH	DH	DA	10/06			Page 1 of 2

Metering Equipment: Material Requirements

THIS PAGE INTENTIONALLY LEFT BLANK

				Electric Service Requirements		RPM-1
				Residential Combination Meter Panel: 225A Maximum		
Drawn:	Eng:	Appr:	Date:	Revision: 1		
DH	DH	DA	10/06	Page 2 of 2		