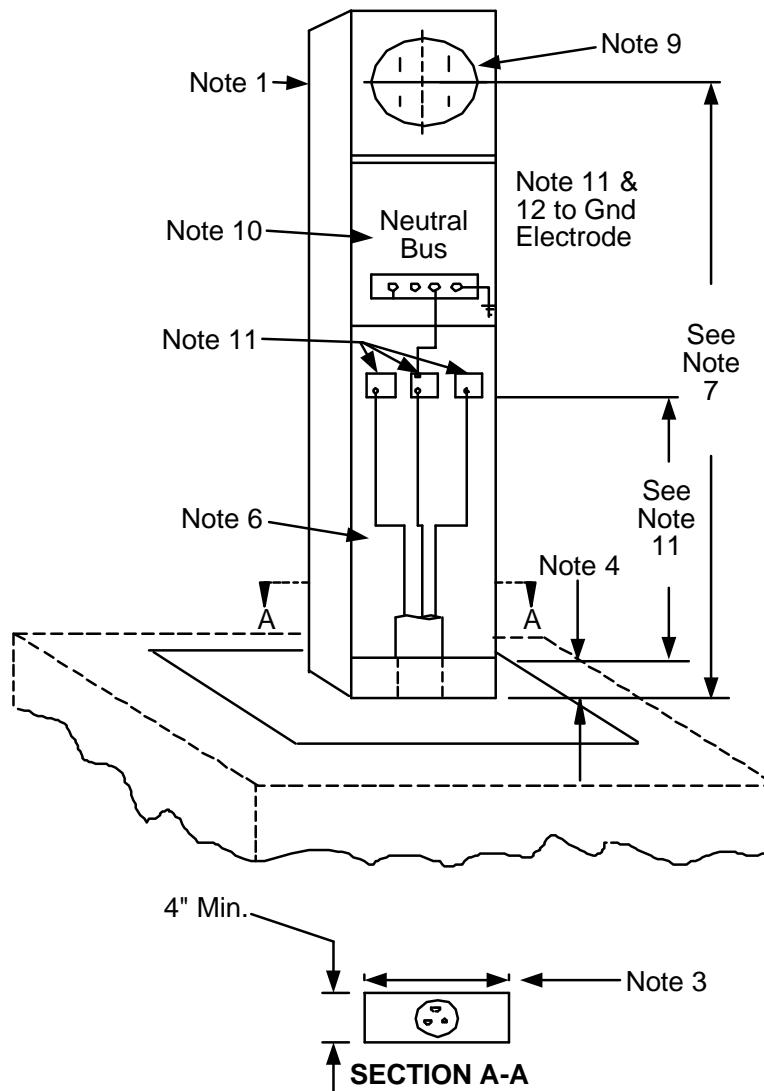


# Metering Equipment: Material Requirements

200 Amps, 240 Volts Maximum, Single or Double Meter Post




All Dimensions Shown are in Inches

## NOTES:

### General Construction:

1. The meter socket shall be sealable and have a minimum rating of 100 amperes.
2. Construction, material, and corrosive-resistant finish shall be approved by a EUSERC recognized test laboratory.
3. Minimum width of access opening shall be 7-1/2".
4. A fixed panel shall extend 2" minimum to 6" maximum above grade.

				Electric Service Requirements		<b>RPM-7</b>
				<b>Typical UG Service &amp; Meter Post for Mobile Home or Non-Commercial Use</b>		
Drawn:	Eng:	Appr:	Date:			Revision: 1
DH	DH	DA	11/06			Page 1 of 2

## Metering Equipment: Material Requirements

5. Base shall be suitable for mounting on a concrete foundation with four (4) ½” diameter bolts per sheet RS-70.
6. Adequate ventilation shall be provided to inhibit the condensation of moisture within the enclosure.
7. The minimum meter height shall be 36” above the grade line when the meter is enclosed, or 48” when exposed.
8. The service cable pull and terminating section shall be accessible from either front or rear of the post by removing an 8” minimum width sealable panel (or panels). The removable panel (or panels) shall extend from the top of the fixed panel (See Note 3) and when removed, allow full access to the terminating lugs. The service cable pull and terminating section space shall be restricted to serving agency use.
9. If the meter is enclosed, the enclosing cover shall be hinged and self-supporting, equipped with a reading window and be removable for meter testing or inspection.
10. The service main disconnect and power outlet section shall have barriers installed to prevent access to the service cable pull and termination section and to un-metered conductors which connect to the socket.

### Service Terminating Facilities:


11. Service termination lugs shall be twin No. 2 to 350 MCM aluminum bodied set screw type for use with 5/16” Allen wrench. The minimum height of lug is 18” above grade line; the maximum is 36”. A minimum 12” opening shall be maintained from the termination lugs to any fixed panel below the lugs. Space between termination lugs or between phase termination lugs and sides of pedestal shall be 1-1/2”. Insulation barriers are required when this space is reduced.

### Grounding Facilities:

12. An accessible equipment grounding lug shall be provided.

### Metering Facilities:

13. The meter socket base shall be fabricated with components tested by a EUSER- recognized test laboratory and shall be provided with a sealing ring. The meter socket shall be mounted on support and attached to meter panel. The socket shall be factory-wired with the conductors located in a separate or barriered raceway from the service terminating lugs to the meter socket. The conductors which extend to the meter socket shall be connected at the service terminating lugs independently of the connection for the service lateral conductors.

				Electric Service Requirements		<b>RPM-7</b>
				<b>Typical UG Service &amp; Meter Post for Mobile Home or Non-Commercial Use</b>		
Drawn:	Eng:	Appr:	Date:			Revision: 1
DH	DH	DA	11/06			Page 2 of 2