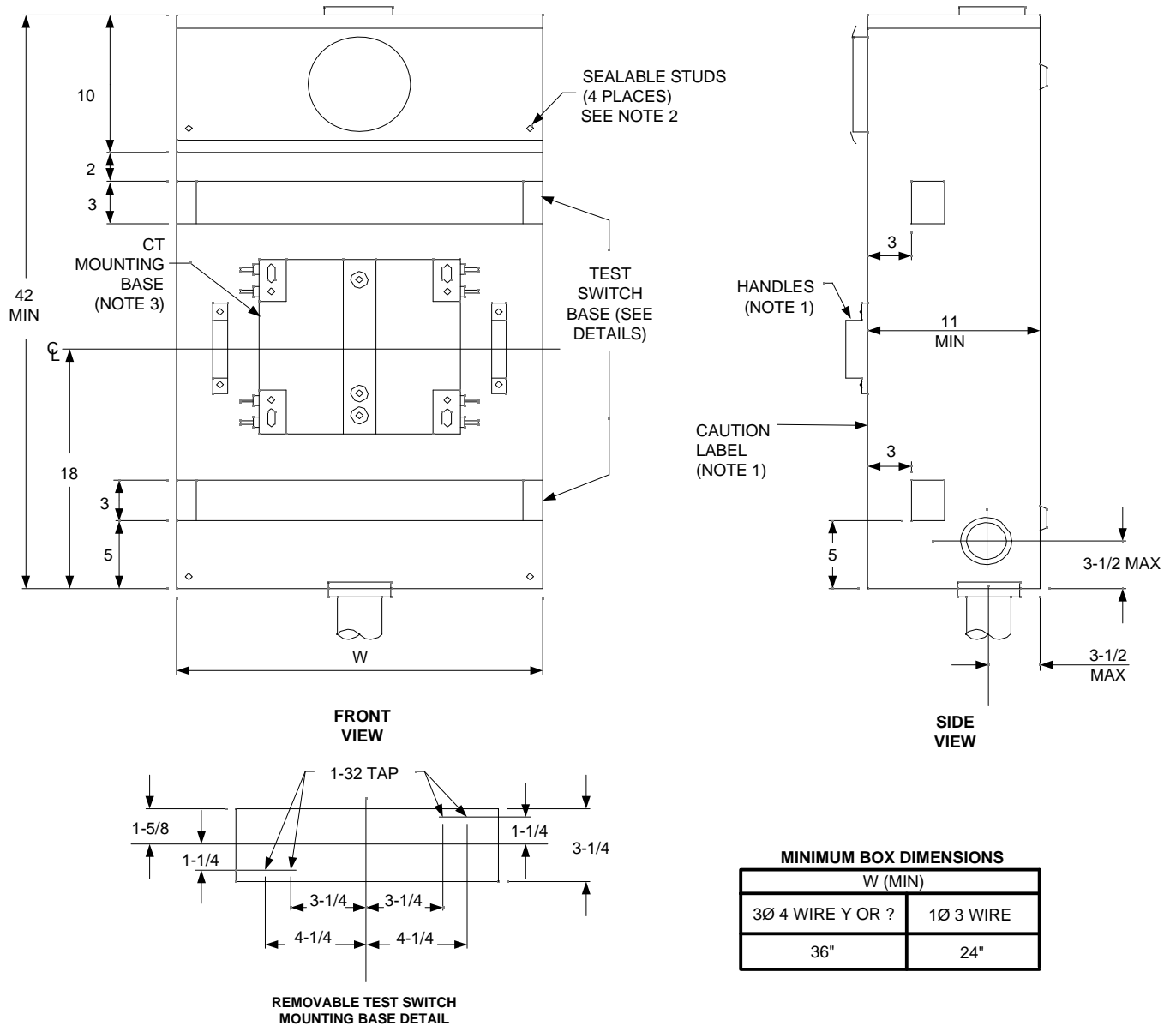



Metering Equipment: Material Requirements



All Dimensions Shown are in Inches


NOTES:

- Effective July 1, 2009, all cabinet access covers shall be hinged.
- All panels and covers shall be sealable and all securing screws shall be captive.
- Current-transformer compartment cover shall have handle(s) and a caution label reading "Do Not Break Seals, No Fuses Inside".
- See drawings RPM-28, RPM-28A, RPM-29, and RPM-29A for C.T. mounting base details.
- 600 Amps Maximum is allowed for 1 phase, 3 wire services, while 800 Amps Maximum is allowed for 3 phase, 4 wire.

				Electric Service Requirements		RPM-13
				Combination CT Cabinet/Meter Socket for Overhead Service		
Drawn:	Eng:	Appr:	Date:			Revision: 2
DH	ME	KL	02/23/09			Page 1 of 2

Metering Equipment: Material Requirements

THIS PAGE INTENTIONALLY LEFT BLANK

				Electric Service Requirements		RPM-13
				Combination CT Cabinet/Meter Socket for Overhead Service		
Drawn:	Eng:	Appr:	Date:	Revision: 2		
DH	ME	KL	02/23/09	Page 2 of 2		