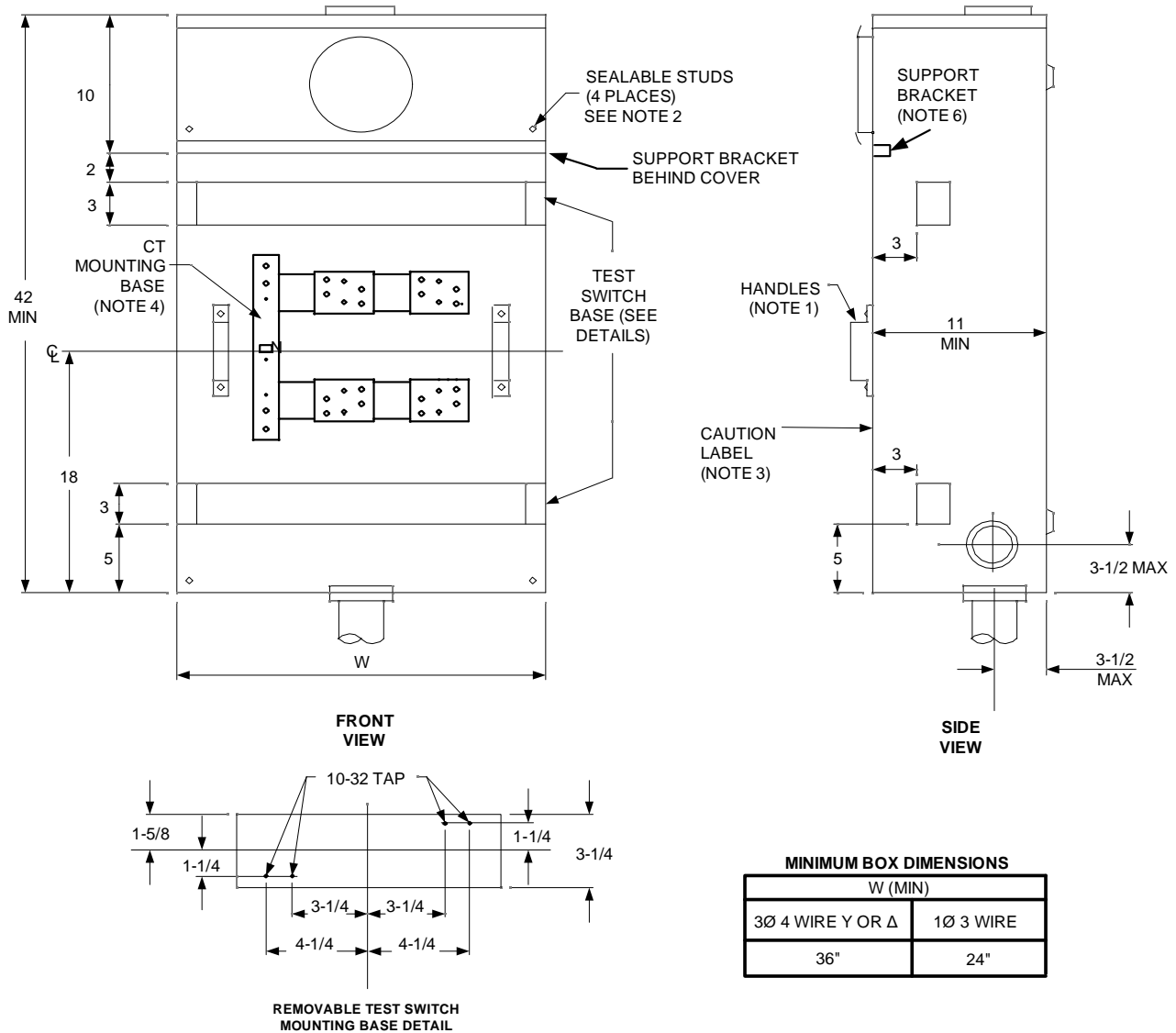



Metering Equipment: Material Requirements



All Dimensions Shown are in Inches


NOTES:

- Effective July 1, 2009, all cabinet access covers shall be hinged and have two lifting handles.
- All panels and covers shall be sealable and all securing screws shall be captive.
- Current-transformer compartment cover shall have handle(s) and a caution label reading "Do Not Break Seals, No Fuses Inside".
- See drawings RPM-28A and RPM-29A for C.T. mounting base details.
- 600 Amps Maximum is allowed for 1 phase, 3 wire services, while 800 Amps Maximum is allowed for 3 phase, 4 wire.
- A panel support bracket shall be provided as shown for the meter and current transformer panels. The meter panel shall be attached to the bracket with securing screws to prevent the panel from pulling out when the meter is removed from the socket.

				Electric Service Requirements		RPM-13
				Combination CT Cabinet/Meter Socket for Overhead Service		
Drawn:	Eng:	Appr:	Date:			Revision: 3
JR	JR	DA	05/19			Page 1 of 2

Metering Equipment: Material Requirements

THIS PAGE INTENTIONALLY LEFT BLANK

	Electric Service Requirements			RPM-13
	Combination CT Cabinet/Meter Socket for Overhead Service			
Drawn:	Eng:	Appr:	Date:	Revision: 3
JR	JR	DA	05/19	Page 2 of 2