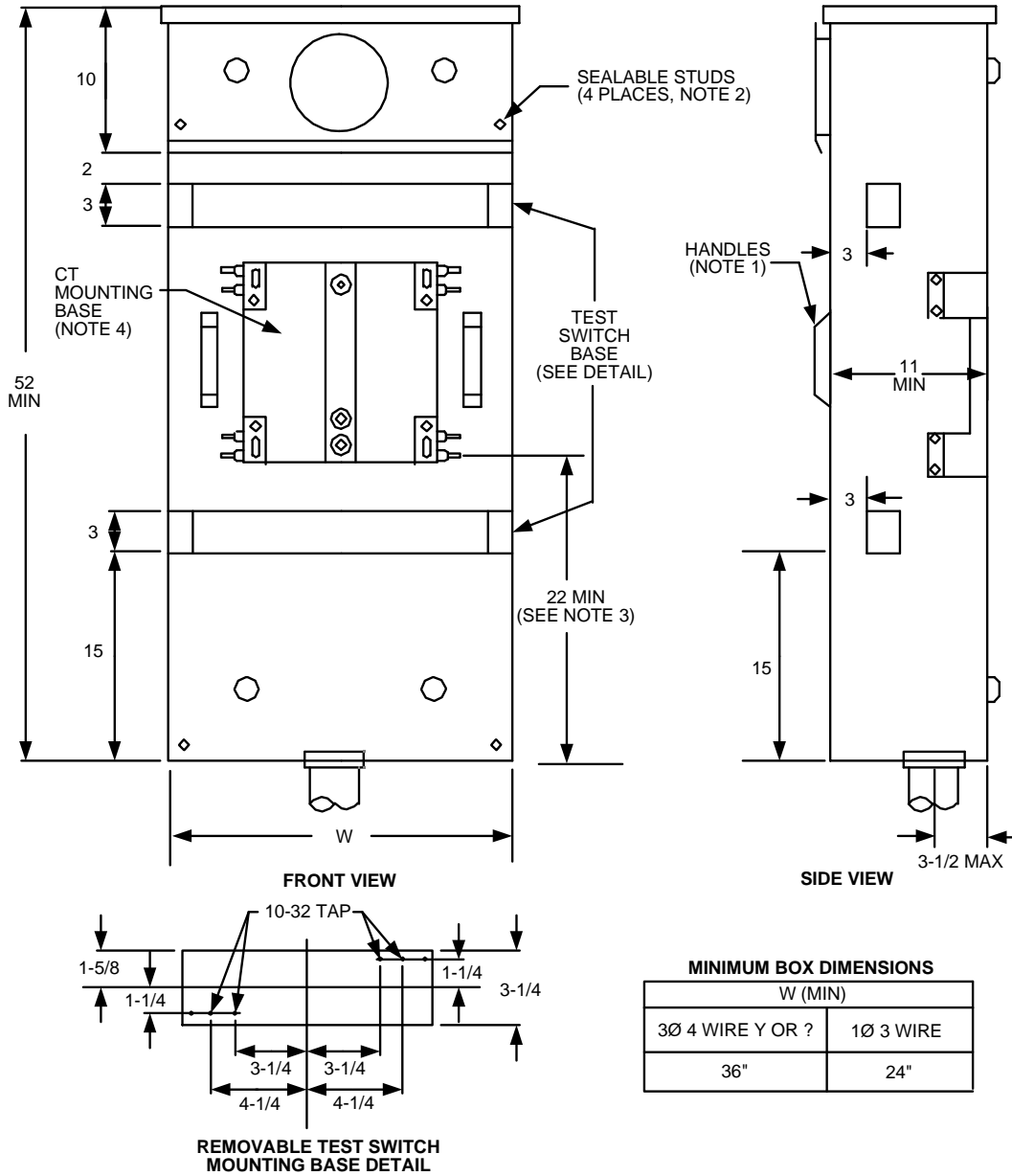



Metering Equipment: Material Requirements




NOTES:

1. Effective July 1, 2009, all cabinet access covers shall be hinged.
2. All panels and covers shall be sealable and securing screws shall be captive.
3. Current-transformer compartment cover shall have handle(s) and a caution label reading: "Do Not Break Seals, No Fuses Inside"
4. See drawings RPM-28,28A, 29, and RPM-A for CT, mounting base details.
5. The height of the lowest neutral cable termination bolt may be reduced to 20" minimum.
6. 600 Amps maximum is allowed for 1phase, 3 wire services, while 800 Amps maximum is allowed for 3 phase, 4 wire.

				Electric Service Requirements		RPM-14
				Combination CT Cabinet/Meter Socket for Underground Service		
Drawn:	Eng:	Appr:	Date:			Revision: 2
DH	ME	KL	02/23/09			Page 1 of 2

Metering Equipment: Material Requirements

THIS PAGE INTENTIONALLY LEFT BLANK

				Electric Service Requirements		RPM-14
				Combination CT Cabinet/Meter Socket for Underground Service		
Drawn:	Eng:	Appr:	Date:			Revision: 2
DH	ME	KL	02/23/09			Page 2 of 2