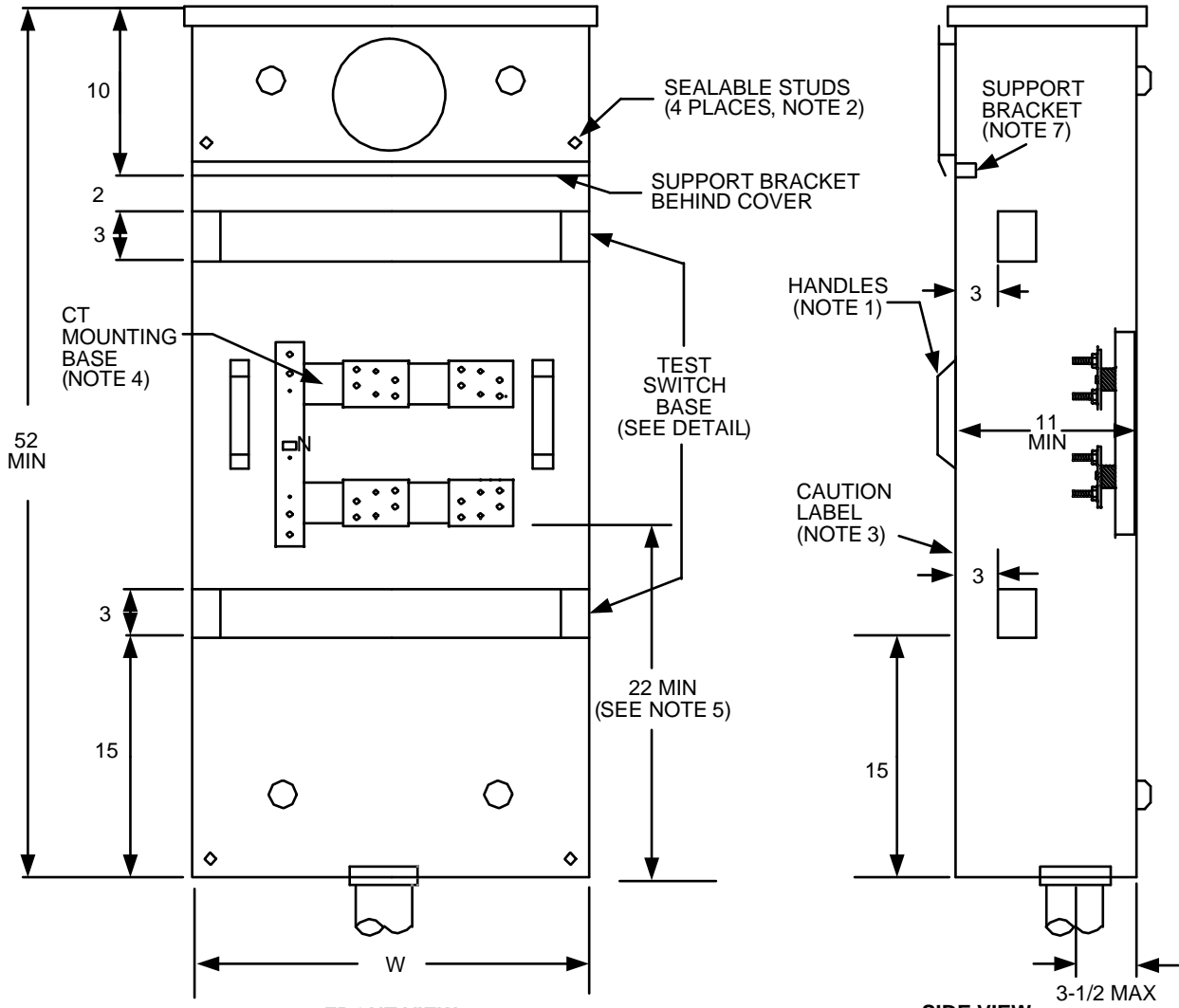



Metering Equipment: Material Requirements



MINIMUM BOX DIMENSIONS

W (MIN)	
3Ø 4 WIRE Y OR Δ	1Ø 3 WIRE
36"	24"

	Electric Service Requirements				RPM-14
	Combination CT Cabinet/Meter Socket for Underground Service				
Drawn:	Eng:	Appr:	Date:		
JR	JR	DA	05/19	Revision: 3 Page 1 of 2	

Metering Equipment: Material Requirements

NOTES:

1. Effective July 1, 2009, all cabinet access covers shall be hinged and have two lifting handles.
2. All panels and covers shall be sealable and securing screws shall be captive.
3. Current-transformer compartment cover shall have handle(s) and a caution label reading: "Do Not Break Seals, No Fuses Inside"
4. See drawings RPM-28A and RPM-29A for CT, mounting base details.
5. The height of the lowest neutral cable termination bolt may be reduced to 20" minimum.
6. 600 Amps maximum is allowed for 1phase, 3 wire services, while 800 Amps maximum is allowed for 3 phase, 4 wire.
7. A panel support bracket shall be provided as shown for the meter and current transformer panels. The meter shall be attached to the bracket with securing screws to prevent the panel from pulling out when the meter is removed from the socket.

				Electric Service Requirements		RPM-14
				Combination CT Cabinet/Meter Socket for Underground Service		
Drawn:	Eng:	Appr:	Date:			Revision: 3
JR	JR	DA	05/19			Page 2 of 2