

# Metering Equipment: Material Requirements

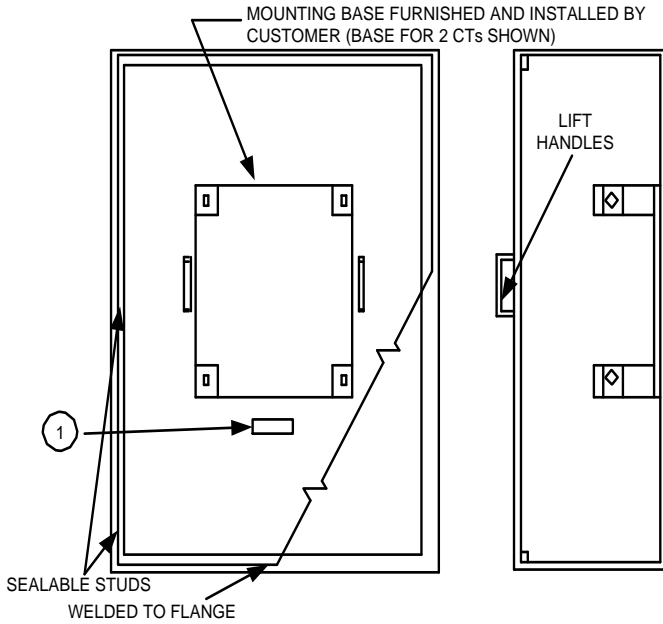


FIGURE 1.  
CABINET SHOWING STUD MOUNTED COVER

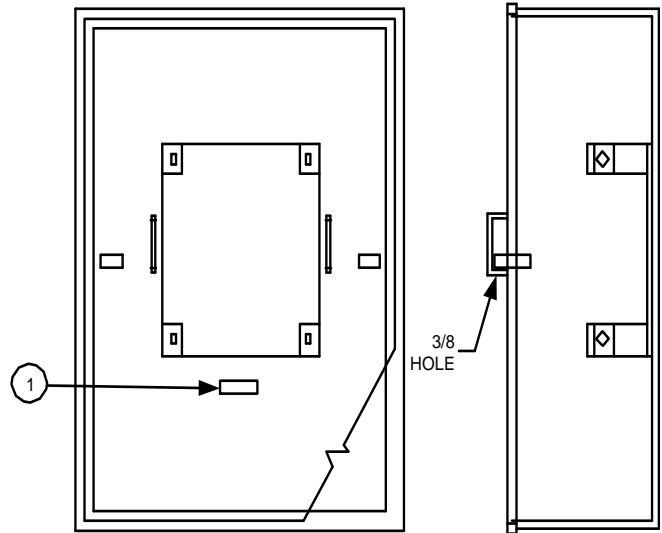


FIGURE 2.  
CABINET SHOWING FLANGED  
COVER FASTENED BY SEALABLE  
RIVET LATCHES

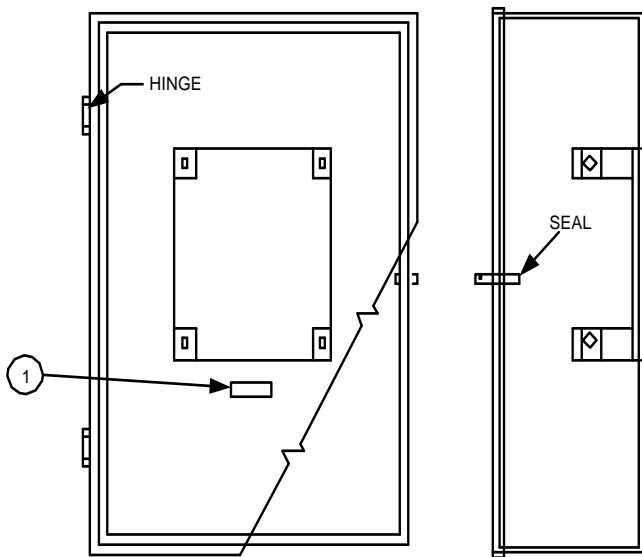


FIGURE 3.  
HINGED, FLANGED COVER

TABLE 1

TYPE OF SERVICE	MIN CABINET SIZE	MOUNTING BASE
1Ø 3 WIRE	24"W x 48"H x 12"D	RPM-28A
3Ø 4 WIRE	36"W x 48"H x 12"D	RPM-29A


1 CAUTION SIGN

DO NOT BREAK SEAL  
NO FUSES INSIDE

All Dimensions Shown are in Inches

## NOTES:


1. Effective July 1, 2009, covers shall be sealable and hinged.
2. Customer shall furnish lugs and connect cable to current-transformer mounting base.
3. Current-transformer cabinet shall not be used as a splicing chamber.
4. When exposed to weather, cabinet shall be weather tight.
5. Grounding lug for minimum No. 8 wire shall be provided internally, for use of utility.

				Electric Service Requirements		RPM-16
				<b>Current Transformer Cabinet: 400A Maximum</b>		
Drawn:	Eng:	Appr:	Date:			Revision: 3
GV	JR	DA	12/18			Page 1 of 2

# Metering Equipment: Material Requirements

---

THIS PAGE INTENTIONALLY LEFT BLANK

				Electric Service Requirements		<b>RPM-16</b>
				<b>Current Transformer Cabinet: 400A Maximum</b>		
Drawn:	Eng:	Appr:	Date:	Revision: 3		
GV	JR	DA	12/18	Page 2 of 2		