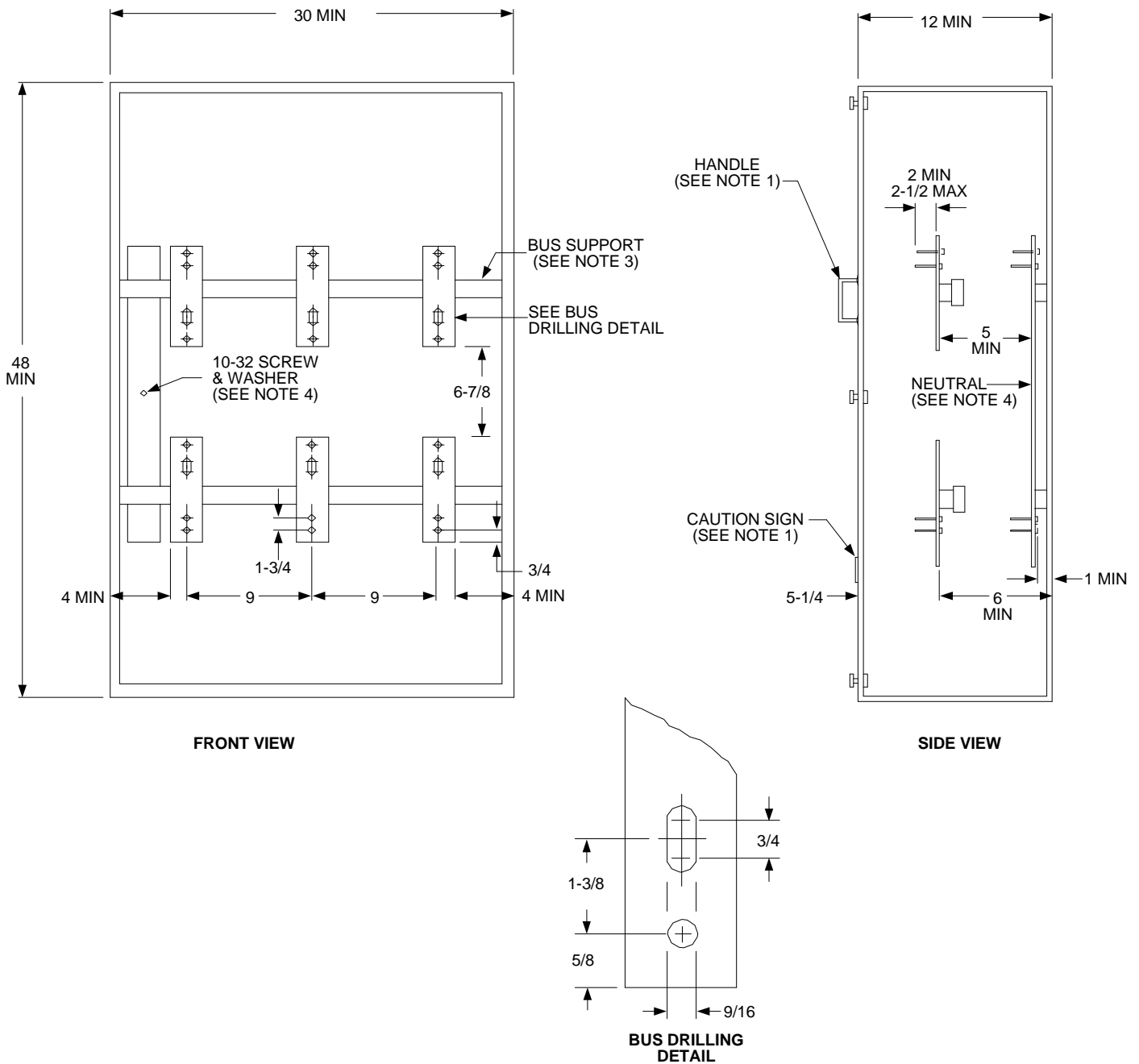



# Metering Equipment: Material Requirements



All Dimensions Shown are in Inches

## NOTES:


1. Effective July 1, 2009, all cabinet access covers shall be hinged (no removable covers).
2. The cover shall be sealable, equipped with two handles, and have a caution label reading "Do Not Break Seals – No Fuses Inside". The covers shall also be equipped with a device to hold the cover in the open position at 90 degrees or more.
3. Hinged covers shall be sealed on the unsupported side. All securing screws shall be captive.

				Electric Service Requirements		<b>RPM-18</b>
				<b>Current Transformer Cabinet:</b> <b>3Ø, 4 Wire, 800A Maximum</b>		
Drawn:	Eng:	Appr:	Date:			Revision: 2
DH	ME	KL	2/23/09x			Page 1 of 2

## Metering Equipment: Material Requirements

---

4. The bus support bar shall be rigid to prevent misalignment of the bus units with the cables in place. Bus units shall be anchored to prevent turning.
5. The neutral bus may be located at either side and shall be provided with 10-32 screw and washer. As an alternate, an insulated, bondable double lug may be provided in place of the neutral bus.
6. Each cable terminating position shall consist of two ½” steel bolts extending from 2” minimum to 2-1/2” maximum from the mounting surface and spaced on 1-3/4” vertical centers. Each bolt shall be furnished with a spring washer and a nut. The spring washer may be either a cone type (Belleville) or a split-ring washer and a flat washer. All parts shall be plated to prevent corrosion.
7. For meter enclosure details, see RPM-39.
8. [Obsolete specification after July 1, 2009, per Note 1] Removable covers shall be limited to a maximum size of 9 square feet in area. Sealing provisions for removable covers shall consist of two drilled out and wing nut assemblies located on opposite sides of the cover.

				Electric Service Requirements		<b>RPM-18</b>
				<b>Current Transformer Cabinet: 3Ø, 4 Wire, 800A Maximum</b>		
Drawn:	Eng:	Appr:	Date:			Revision: 2
DH	ME	KL	2/23/09x			Page 2 of 2