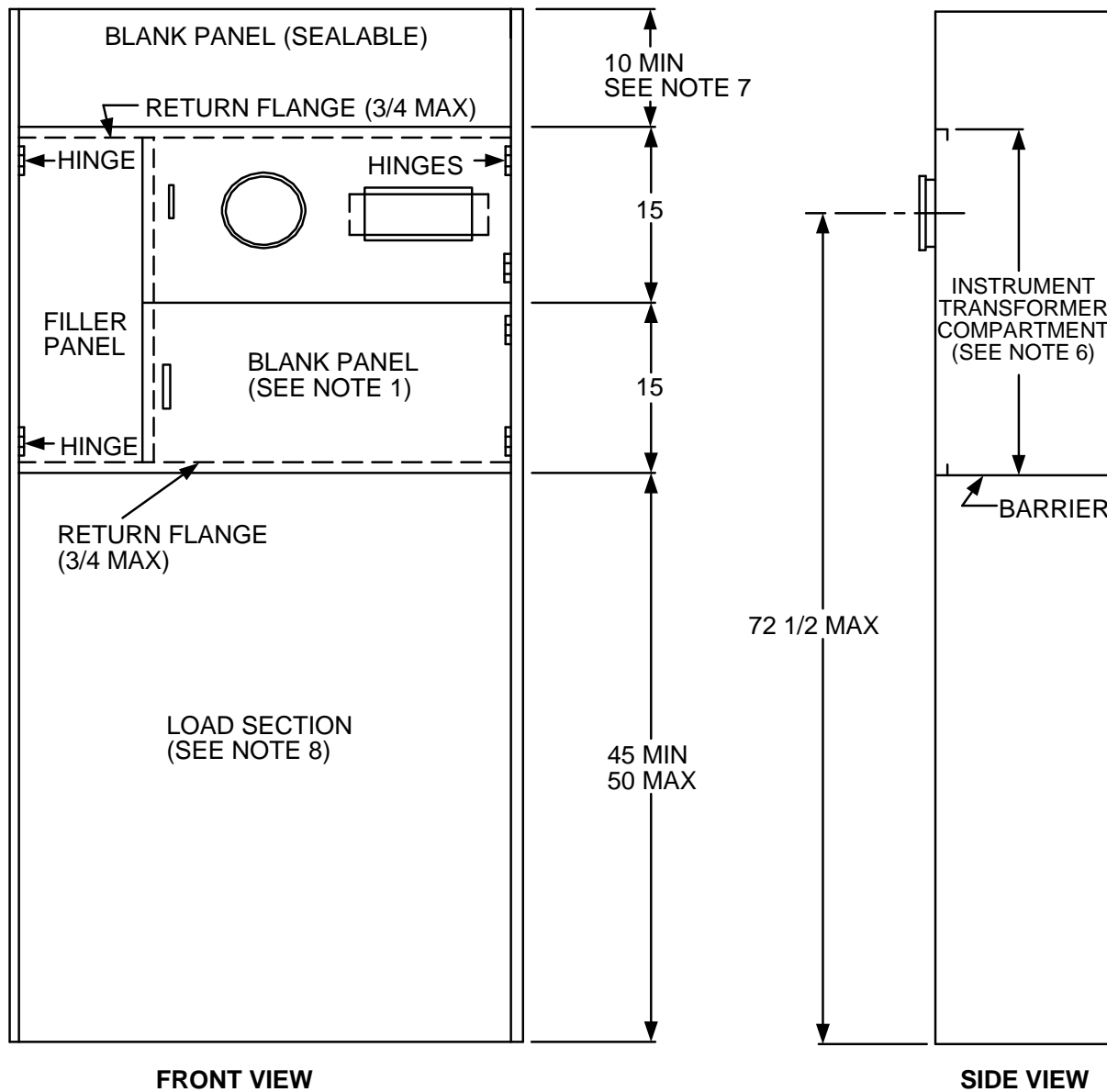



Metering Equipment: Material Requirements



All Dimensions Shown are in Inches


NOTES:

1. Socket meter panel with blank meter panel shown. Consult Meter Department regarding alternate meter panel arrangements. Blank meter panel shall be constructed of 12 gauge (minimum) steel. See RPM-32 and RPM-33 for socket meter panel details.
2. Filler panels shall be used where the service section width exceeds the meter panel width. Meter panels, either socket or blank, shall not be hinged to hinged filler panels. Non-hinged filler panels shall not extend into the required instrument-transformer compartment access opening.
3. Meter panels and filler panels shall be equipped with stops to prevent inward swinging beyond the front surface of the service section.

				Electric Service Requirements		RPM-26
				Standard Switchboard Service Section with Instrument Transformer Compartment & Filler Panel		
Drawn:	Eng:	Appr:	Date:	Revision: 1		
DH	DH	DA	1106	Page 1 of 2		

Metering Equipment: Material Requirements

4. Hinges shall be readily interchangeable, left or right, on the job site.
5. Removable or hinged panels enclosing unmetered bus or cable shall be sealable. All securing screws shall be captive.
6. For requirements regarding instrument-transformer compartments, see
0-1000 Amps See RPM-19 and RPM-20
1001-3000 Amps See RPM-22
3001 Amps and above See RPM-24
7. Dimension may be reduced if the service section is supplied from horizontal cross bussing or bus duct.
8. When used as a utility terminating section in a bottom-fed service section, see RPM-27, Figure 3.
9. For outdoor applications, see RPM-54 for weatherproof enclosure requirements.

				Electric Service Requirements		RPM-26
				Standard Switchboard Service Section with Instrument Transformer Compartment & Filler Panel		
Drawn:	Eng:	Appr:	Date:			Revision: 1
DH	DH	DA	1106			Page 2 of 2