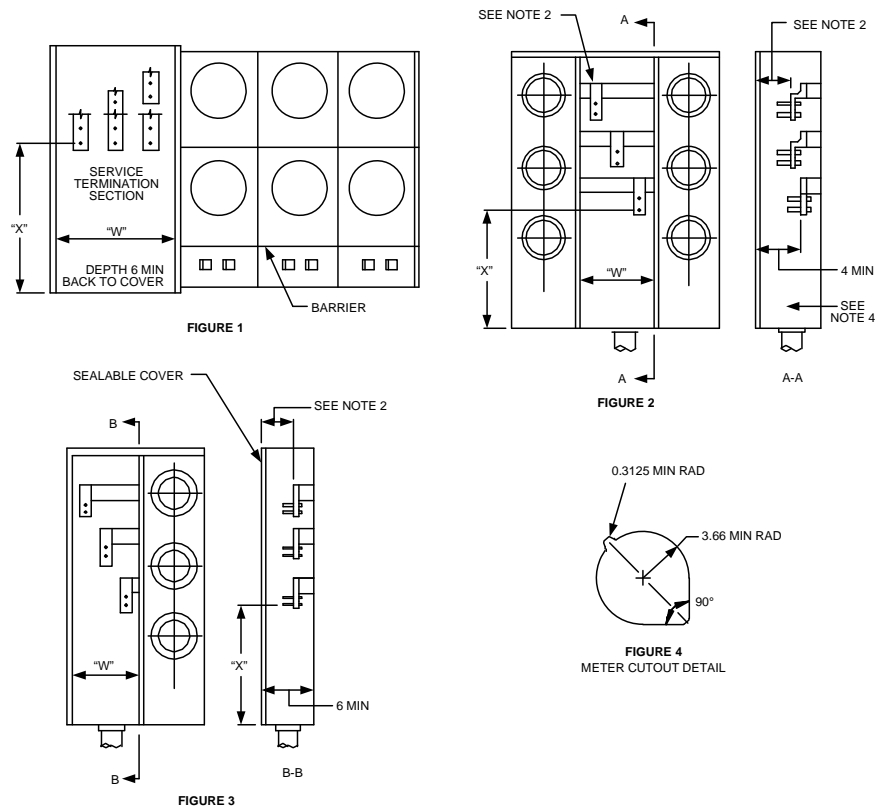


Metering Equipment: Material Requirements




All Dimensions Shown are in Inches

Typical Arrangement for Underground Service Terminating Facilities

Equipment Rating	"X" Dimension	"W" Dimension
0 - 200 Amps	11" Min	10-1/2"
201 - 600 Amps	22" Min	10-1/2"


NOTES:

- Termination enclosure covers shall be:
 - Independent of other service equipment and removable without disturbing adjacent panels
 - Sealable, provided with two lifting handles, and be limited to 9 square feet in area.
- Terminating facilities for service supply conductors shall be provided as follows:
 - For equipment rated 200 amps, terminations may be aluminum-bodied, pressure-type lugs with a range of 1/0 AWG through 250 MCM.
 - For equipment rated 201-600 amps, terminations shall be single-position studs complying with RPM-47.
- The neutral terminating position shall be identified.
- Where service supply conductors cross over horizontal bussing, the bus shall be barriered or fully insulated. The shaded space shown in the terminating enclosure is reserved for the service supply conductors.

				Electric Service Requirements		RPM-42
				Combo Term Enclosure/Multi Meter 1Ø, 3 Wire, 600A Max		
Drawn:	Eng:	Appr:	Date:	Revision: 1		
DH	DH	DA	2/07	Page 1 of 2		

Metering Equipment: Material Requirements

5. Meter Panels shall be removable to provide access to the customer's equipment with utility meters and tamper proof rings in place. Where there is more than one meter socket per panel, the minimum cutout opening as detailed in Figure 4 shall apply.
6. Dimension "W" is the minimum access opening for the terminating enclosure.

				Electric Service Requirements		RPM-42
				Combo Term Enclosure/Multi Meter 1Ø, 3 Wire, 600A Max		
Drawn:	Eng:	Appr:	Date:			Revision: 1
DH	DH	DA	2/07			Page 2 of 2