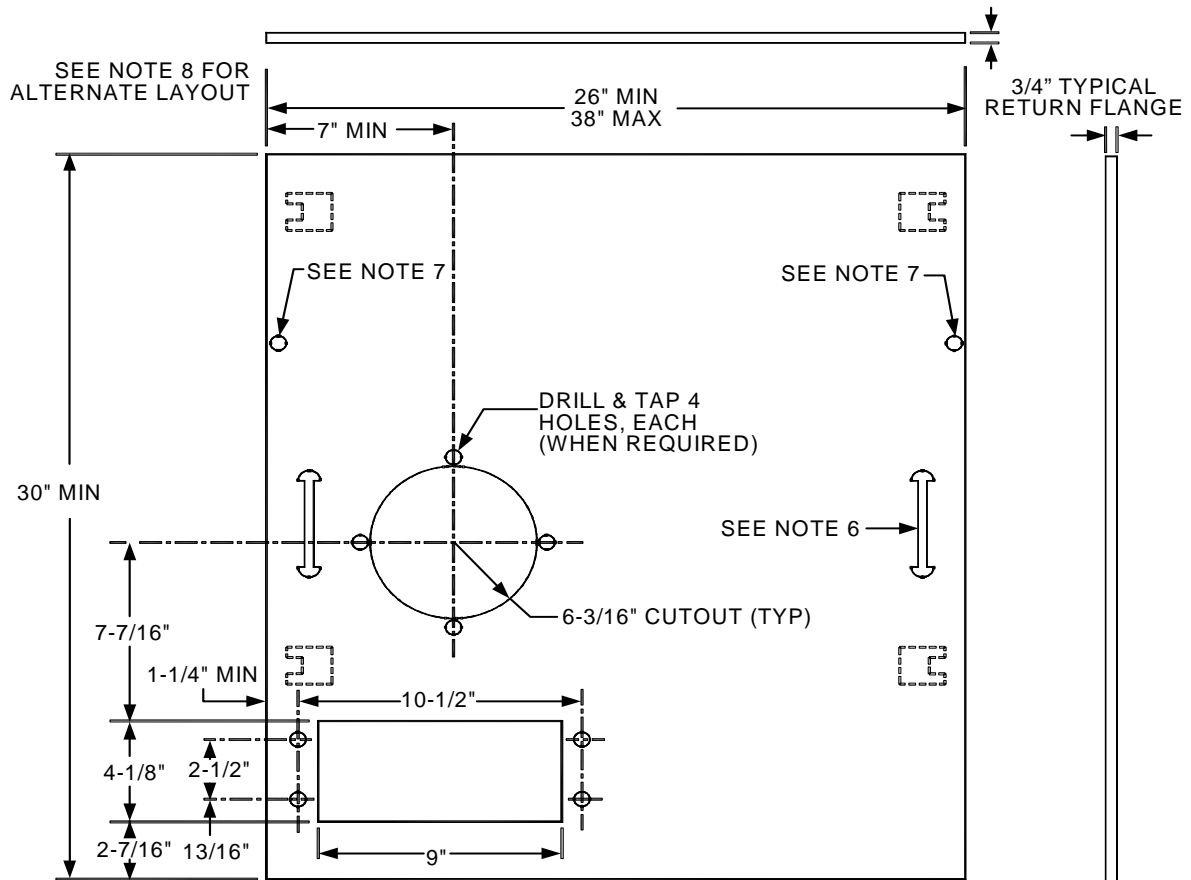
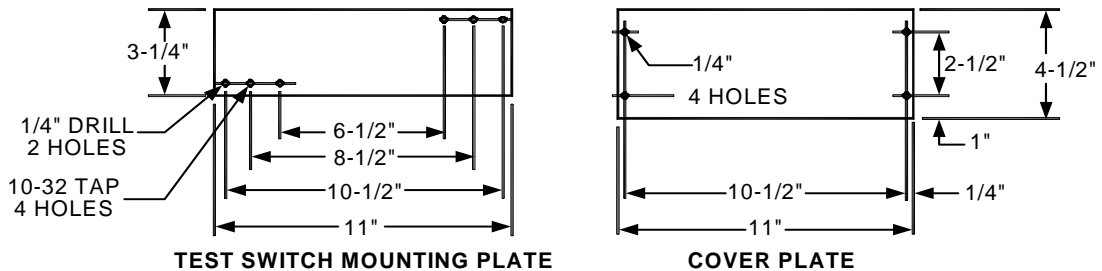


# Metering Equipment: Material Requirements



NOTE: TAP ALL HOLES 10/32 EXCEPT AS NOTED



## NOTES:


1. The panel shall be constructed of 12 gauge (min.) steel and furnished with meter sockets, sealing rings, slotted openings, a removable plate for installation of a secondary test switch, and a cover plate. Slotted openings and removable plate edges shall be smooth to prevent damage to meter wiring.
2. The removable plates shall be attached to the rear of the panel with screws that do not protrude through the face of the panel.
3. Meter sockets shall be designed for back connection.

				Electric Service Requirements		RPM-403
				<b>Hinged Meter Panel w/ Single Socket for 2,400-27,000V Service</b>		
Drawn:	Eng:	Appr:	Date:			Revision: 1
DH	DH	MES	7/07			Page 1 of 2

## Metering Equipment: Material Requirements

---

4. Hinges shall be readily interchangeable, right or left, on panel and permit the panel to open 90° with meter and test facilities in place. For recessed or enclosed meter panels refer to drawing RPM-407. Clevis or removable pin type hinges shall be removable from the top.
5. The panel shall support a 25 pound load applied at the unsupported end when fully opened with a maximum sag of 1/8".
6. The panel shall have a handle attached to both sides.
7. All securing and sealing screws on panel shall be captive. Stud and wing nuts shall be sealable when used.
8. Consult NVE for panel widths more than 36" and see RPM-G for meter socket requirements.

				Electric Service Requirements		<b>RPM-403</b>
				<b>Hinged Meter Panel w/ Single Socket for 2,400-27,000V Service</b>		
Drawn:	Eng:	Appr:	Date:			Revision: 1
DH	DH	MES	7/07			Page 2 of 2