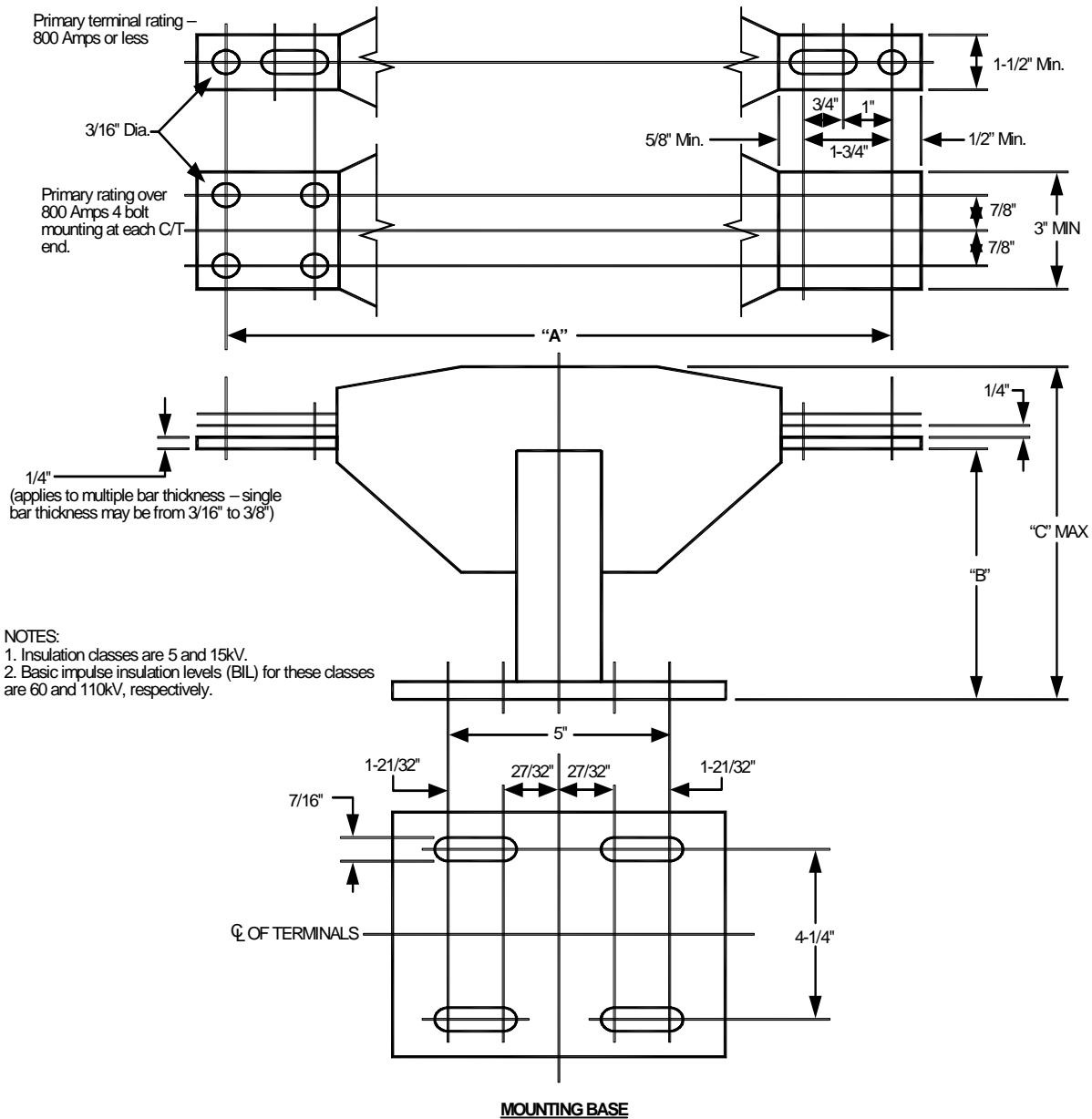


Metering Equipment: Material Requirements




INSULATION CLASS KV	DIMENSIONS (INCHES)					
	"A" AMPERES		"B" AMPERES		"C" (MAX) AMPERES	
	10-800	1200-2000	10-800	1200-2000	10-800	1200-2000
5.0	14	---	5-3/4	---	8	---
15.0	22	---	9	---	11-1/4	---

* Unless otherwise indicated tolerance, plus or minus 1/16"

	Electric Service Requirements			RPM-408
	Indoor CT Dimensions for Metering Purposes: 5kV through 15kV			
Drawn:	Eng:	Appr:	Date:	Revision: 1
DH	DH	DA	2/07	Page 1 of 2

Metering Equipment: Material Requirements

THIS PAGE INTENTIONALLY LEFT BLANK

				Electric Service Requirements		RPM-408
				Indoor CT Dimensions for Metering Purposes: 5kV through 15kV		
Drawn:	Eng:	Appr:	Date:	Revision: 1		
DH	DH	DA	2/07	Page 2 of 2		