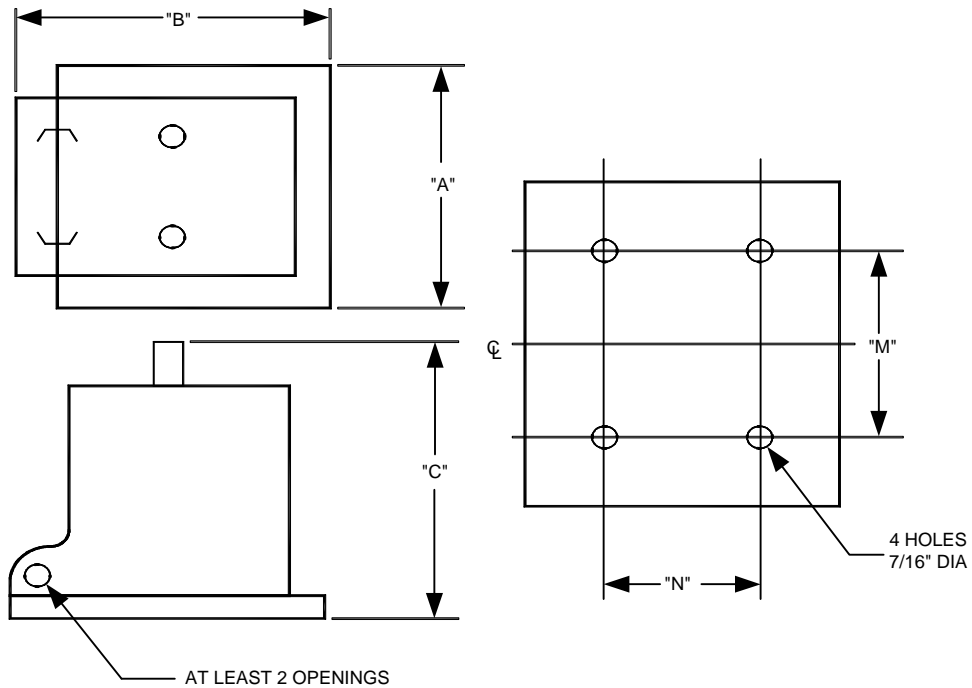


# Metering Equipment: Material Requirements



INSULATION CLASS KV	DIMENSIONS (INCHES*) WITHOUT MOUNTING BRACKET				
	MAXIMUM OVERALL DIMENSIONS			MOUNTING DIMENSIONS	
	"A"	"B"	"C"	"M"	"N"
5.0	11-1/2	13	13	8-1/2	6-1/4
8.7	14-1/2	15-1/2	18-1/2	10	8-5/8
15.0	14-1/2	15-1/2	18-1/2	10	8-5/8

\* Unless otherwise indicated tolerance, plus or minus 1/16 inch.


INSULATION, RATIO, VOLTAGE, AND BIL DATA			
INSULATION CLASS KV	MARKED RATIO	PRIMARY VOLTAGE RATING, VOLTS	KV BIL
5.0	20:1	2400	60
5.0	35:1	4200	60
5.0	40:1	4800	60
8.7	35:1	4200	75
8.7	40:1	4800	75
15.0	60:1	7200	110
15.0	70:1	6400	110
15.0	100:1	12000	110
15.0	120:1	14400	110
15.0	150:1	16500	110

	Electric Service Requirements			RPM-410
	<b>Voltage Transformer (VT) Dimensions: 5kV through 15kV Outdoor</b>			
Drawn:	Eng:	Appr:	Date:	Revision: 1
DH	DH	DA	2/07	Page 1 of 2

# Metering Equipment: Material Requirements

---

THIS PAGE INTENTIONALLY LEFT BLANK

				Electric Service Requirements		RPM-410
				<b>Voltage Transformer (VT) Dimensions: 5kV through 15kV Outdoor</b>		
Drawn:	Eng:	Appr:	Date:	Revision: 1		
DH	DH	DA	2/07	Page 2 of 2		