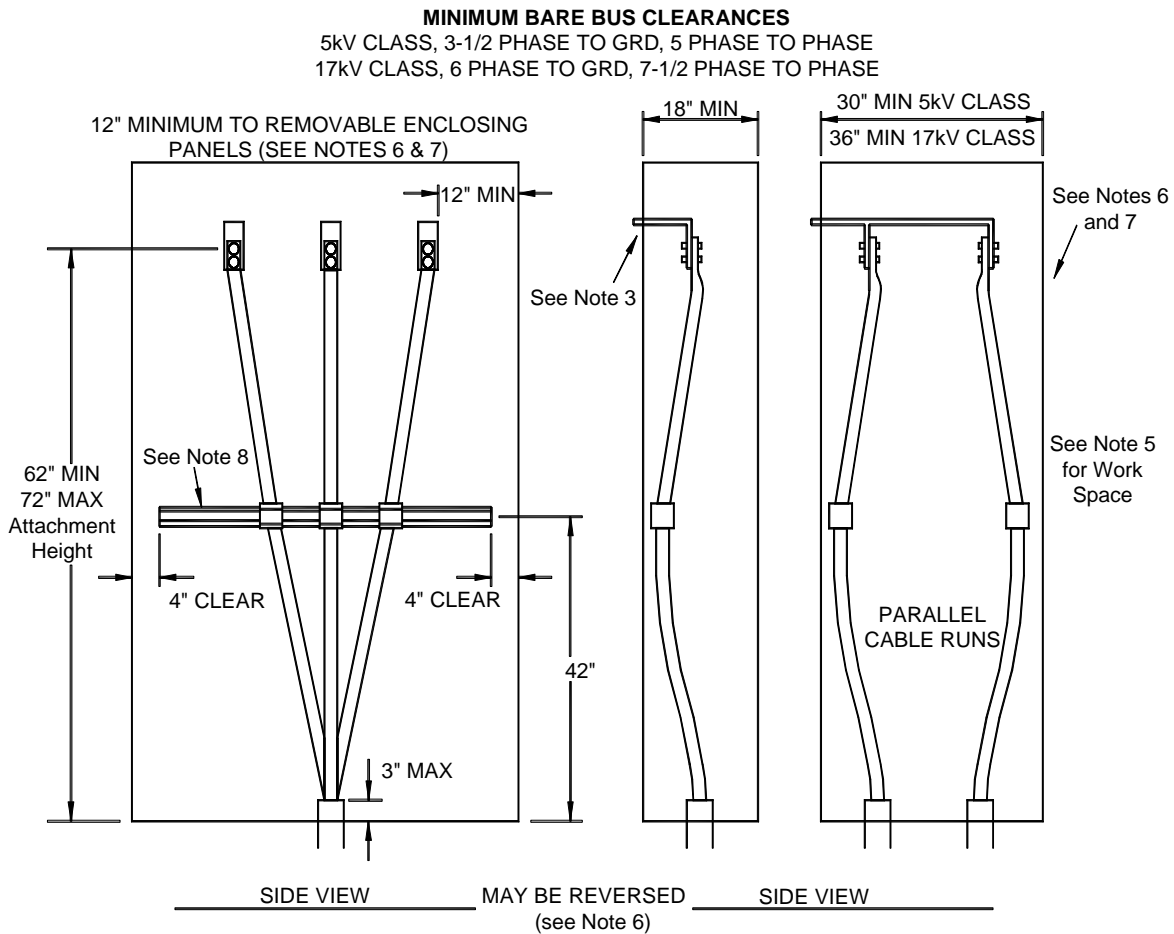


# Metering Equipment: Material Requirements

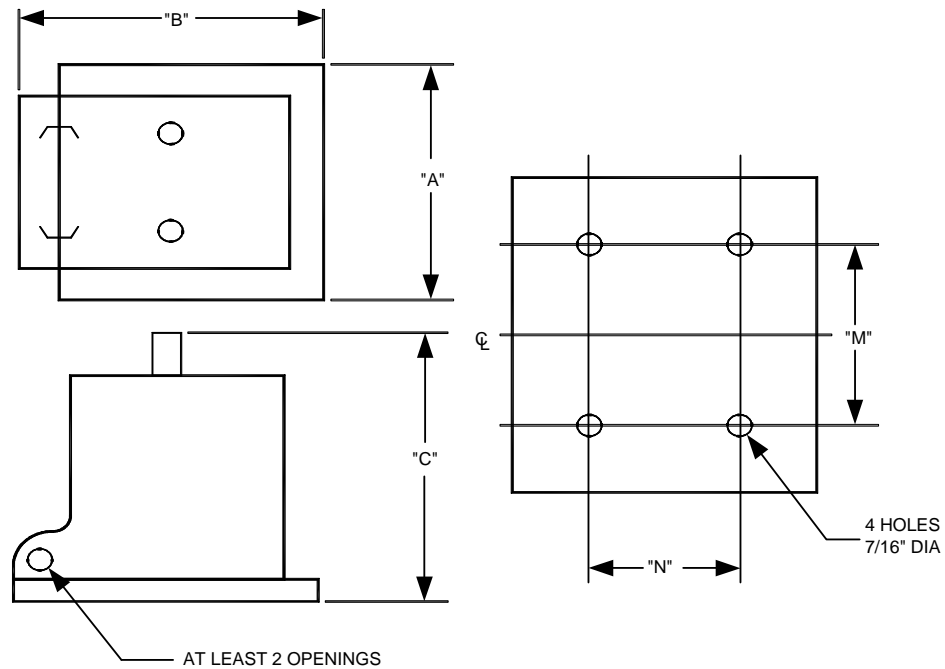


**NOTES:**

1. Consult NVE Meter Services regarding the metering cubicle requirements.
2. Consult NVE New Business for number of service cables, number, size, and location of service conduits; type of pull section and type of termination required.
3. The metering sequence may be either main-metering or metering-main.
4. An insulated neutral landing is required.
5. See RPI-2 for required clear working space in front of the removable enclosing panels.
6. The removable enclosing panels shall normally be front or back. Consult NVE for special permission to locate the removable enclosing panels on the side. Removable enclosing panels shall be provided with a 12" minimum access distance to busses, measured from the busses to the panels with the panels in place. Consult NVE for full door requirements.
7. The removable enclosing panels shall each be sealable, provided with two lifting handles, and limited to a maximum size of 9 square feet.
8. Furnish and install one piece of Unistrut p 1000 (or equivalent) channel as shown.
9. BIL for the pull section shall be not less than that for the customer's associated switchgear

				Electric Service Requirements		RPM-411
				<b>U.G. Service Terminating Pull Section:                  3Ø, 4-Wire, 2400-4800V &amp; 7200-17000V</b>		
Drawn:	Eng:	Appr:	Date:			Revision: 1
DH	DH	DA	2/07			Page 1 of 2

# Metering Equipment: Material Requirements



INSULATION CLASS KV	DIMENSIONS (INCHES*) WITHOUT MOUNTING BRACKET				
	MAXIMUM OVERALL DIMENSIONS			MOUNTING DIMENSIONS	
	"A"	"B"	"C"	"M"	"N"
5.0	11-1/2	13	13	8-1/2	6-1/4
8.7	14-1/2	15-1/2	18-1/2	10	8-5/8
15.0	14-1/2	15-1/2	18-1/2	10	8-5/8

\* Unless otherwise indicated tolerance, plus or minus 1/16 inch.

INSULATION, RATIO, VOLTAGE, AND BIL DATA			
INSULATION CLASS KV	MARKED RATIO	PRIMARY VOLTAGE RATING, VOLTS	KV BIL
5.0	20:1	2400	60
5.0	35:1	4200	60
5.0	40:1	4800	60
8.7	35:1	4200	75
8.7	40:1	4800	75
15.0	60:1	7200	110
15.0	70:1	6400	110
15.0	100:1	12000	110
15.0	120:1	14400	110
15.0	150:1	16500	110

				Electric Service Requirements		RPM-411
				<b>U.G. Service Terminating Pull Section: 3Ø, 4-Wire, 2400-4800V &amp; 7200-17000V</b>		
Drawn:	Eng:	Appr:	Date:			Revision: 1
DH	DH	DA	2/07			Page 2 of 2