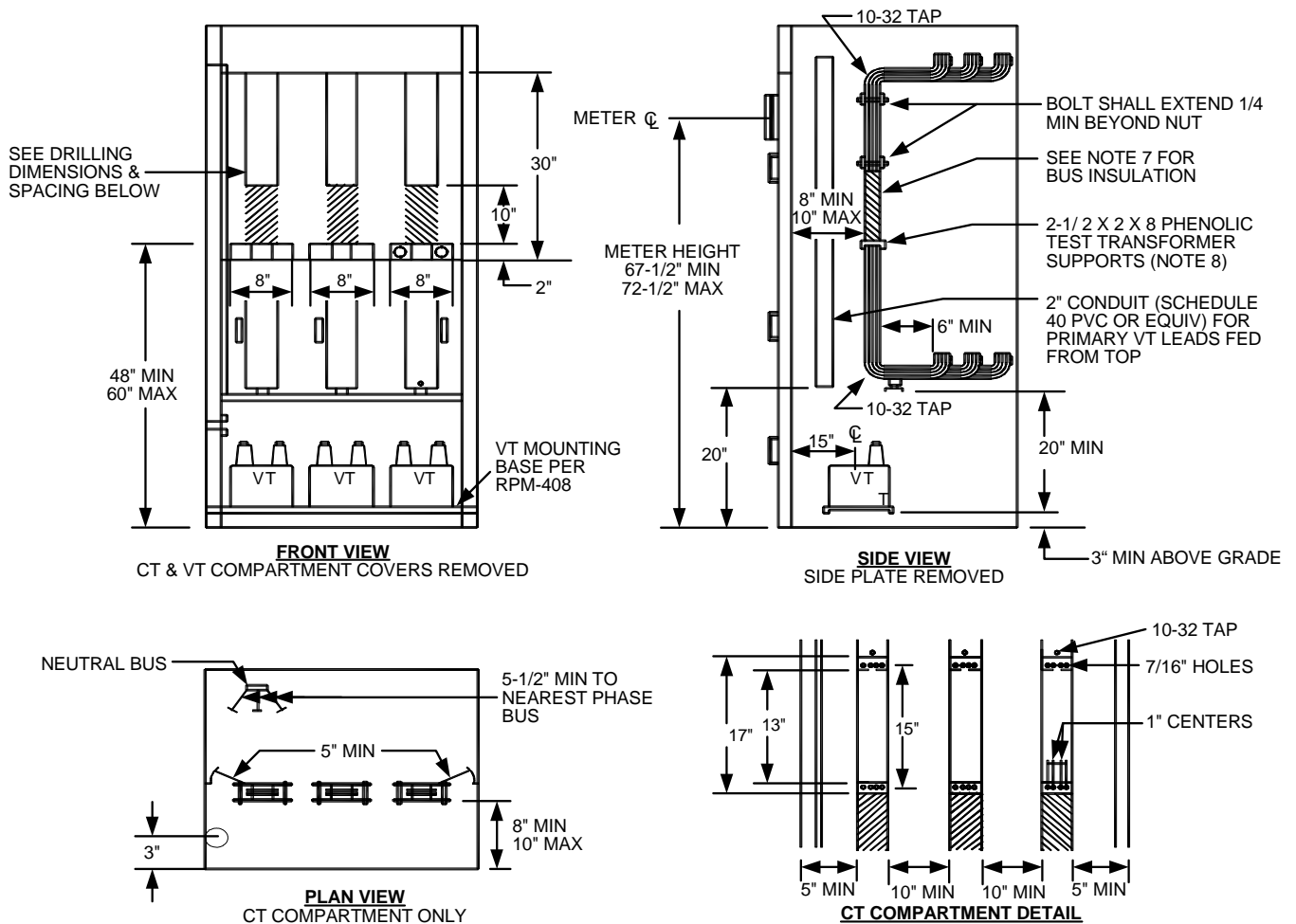



Metering Equipment: Material Requirements




NOTES:

1. Bus insulation and supports are required as shown above.
2. Maximum permissible bus unit: Four 1/4" x 4" bars spaced 1/4".
3. Access panels shall be equipped with two lifting handles and attached with studs and wing nuts or may be side hinged. Panels shall not exceed 9 square feet in area.
4. Serving agency shall specify sequence of metering.
5. Clearance to side of cubicle shall be increased by the amount by which the corner angle exceeds 1-1/2".
6. Direction of feed may be from bottom to top or top to bottom.
7. Bus insulation in test section: Round bus corners to prevent damage to tape, six layers of 7 Mil VC tape, two layers of friction tape, finish with insulating varnish, or equal taping methods may be used. Equivalent phenolic insulated bus may be used in lieu of taping.
8. A continuous bar of insulating material may be installed across the compartment in lieu of the supports shown.
9. An insulated neutral landing lug shall be provided for 4 wire services.

| | | | | | | |
|---|------|-------|-------|---|--|----------------|
|  | | | | Electric Service Requirements | | RPM-414 |
| | | | | HV Metering Enclosure: 3Ø, 4 Wire 4160V, 801-3000 Amps | | |
| Drawn: | Eng: | Appr: | Date: | | | Revision: 1 |
| DH | DH | DA | 2/07 | | | Page 1 of 2 |

THIS PAGE INTENTIONALLY LEFT BLANK

| | | | | | | |
|---|------|-------|-------|---|--|-------------|
|  | | | | Electric Service Requirements | | RPM-414 |
| | | | | HV Metering Enclosure: 3Ø, 4 Wire 4160V, 801-3000 Amps | | |
| Drawn: | Eng: | Appr: | Date: | | | Page 2 of 2 |
| DH | DH | DA | 2/07 | | | |