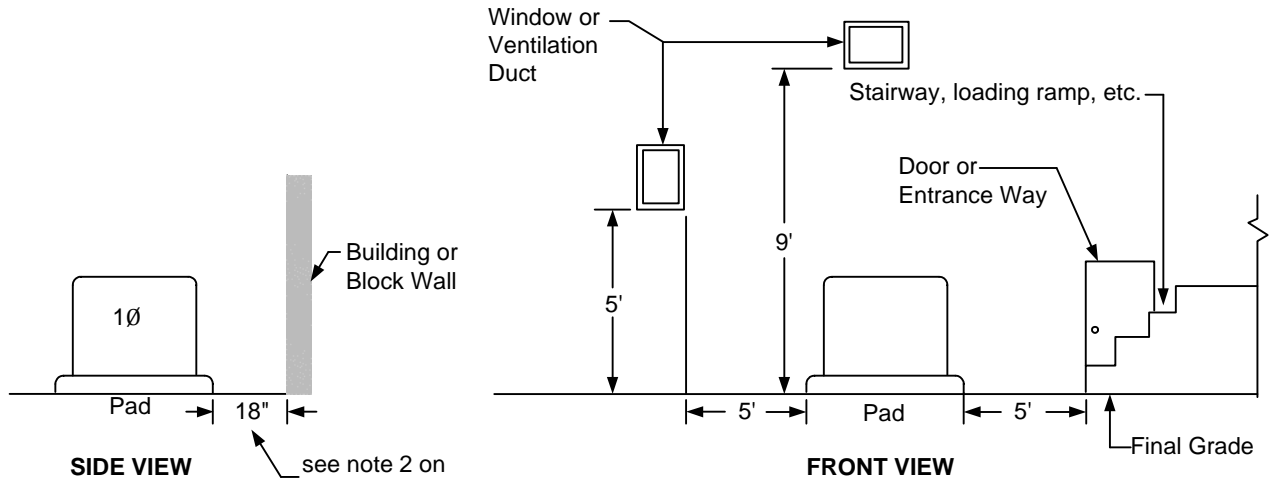
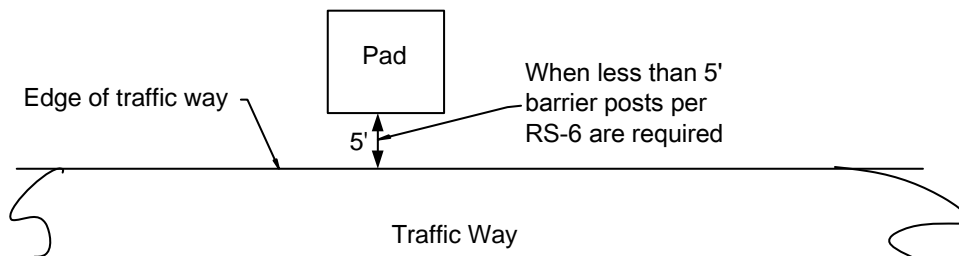
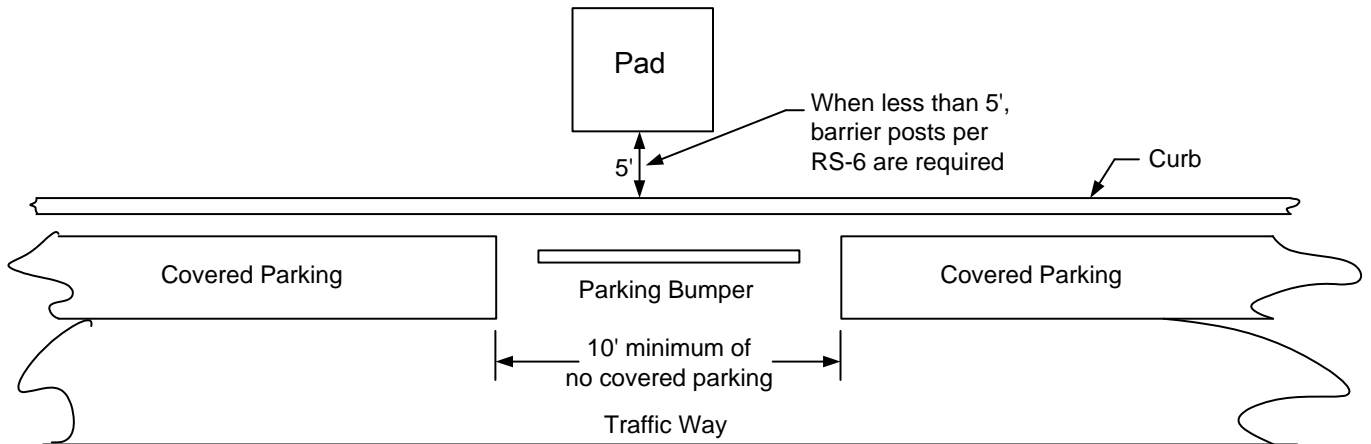


Clearances

INSTALLATION REQUIREMENTS

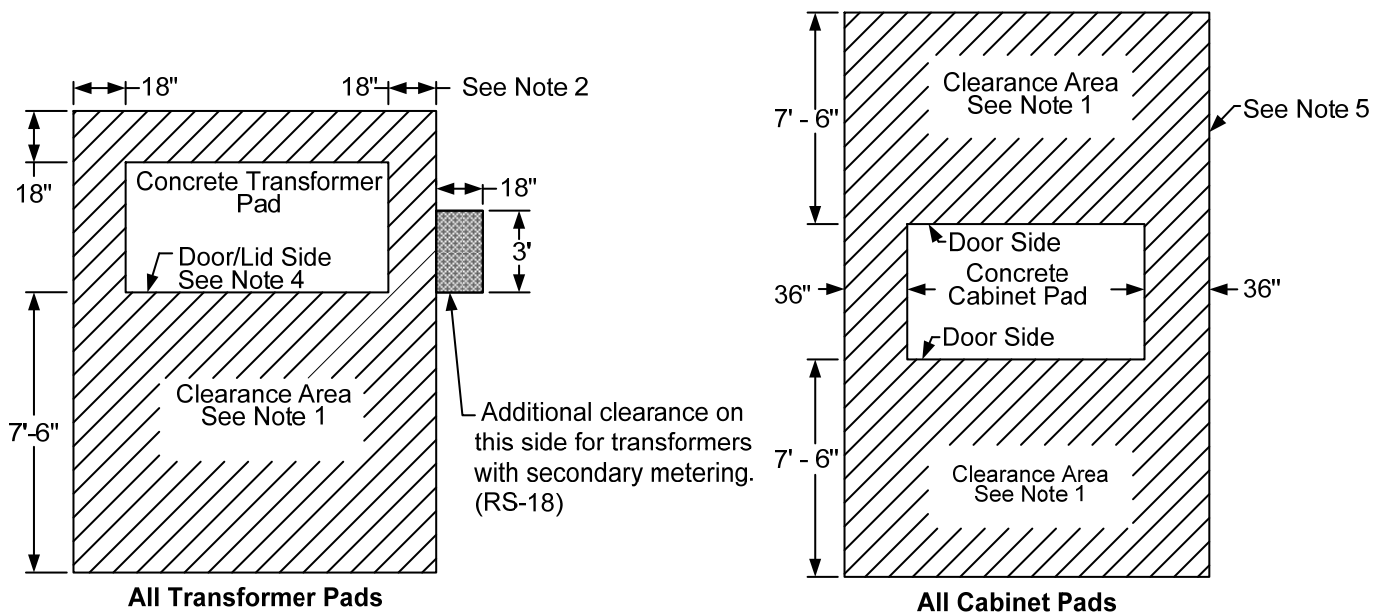


- NOTE:**
1. Equipment pad shall be located as far as practical from windows, doors, fire escapes, entrances and ventilating ducts so as not to present a physical obstruction. It shall be the applicants responsibility to comply with any insurance regulations affecting the installation. The above shown dimensions are minimum clearances.



				Electric Service Requirements		RS-5
				Clearances to Equipment Pad		
Drawn:	Eng:	Appr:	Date:			Revision: 7
JR	TA	DA	2/16			Page 1 of 4

Clearances



NOTES:

1. This area must be free of any above or below ground structures and/or landscaping. Examples include pad, wall, pedestal, foundation, handhole, pull box, meter box, plants, bushes, trees, etc.
2. When a 3 phase PM transformer pad is next to a building or wall, the 18" clearance shall be increased to 36" on the side facing the building or wall.
3. Designer:

Open Areas (no obstructions):

The pad shall not be more than 15' from the truck access to facilitate equipment installation and replacement.

Enclosed Areas (block walls or fences 10' or less in height above grade):


The pad shall not be more than 10' from the truck access to facilitate equipment installation and replacement.

Enclosed Areas (block walls or fences greater than 10' in height above grade):

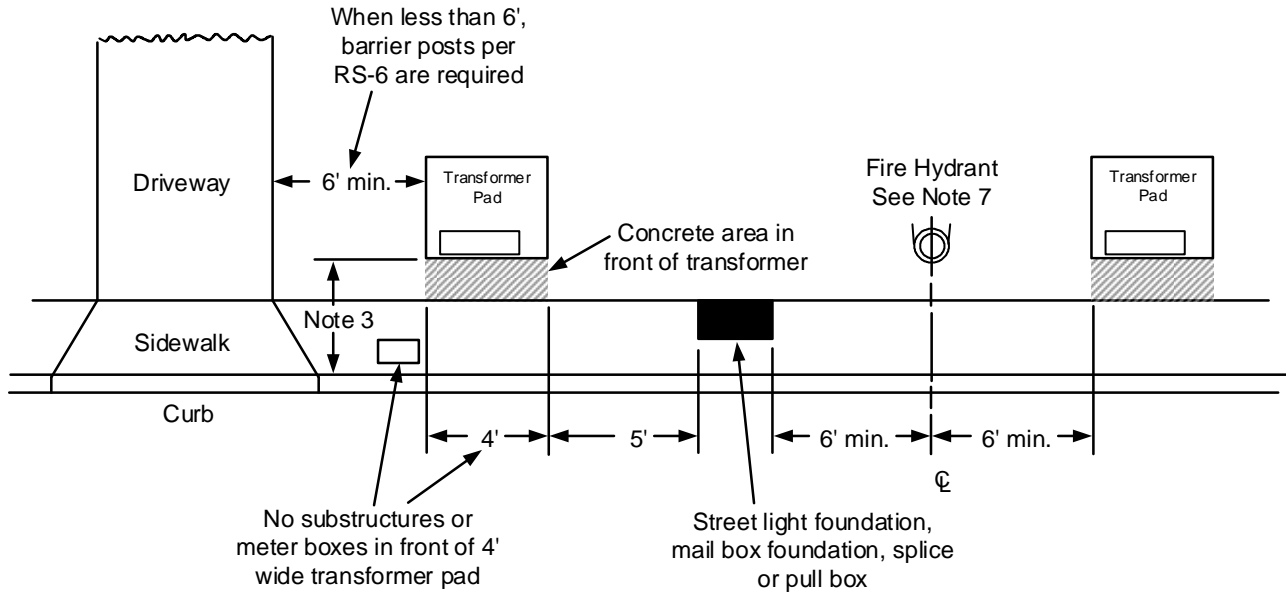
The pad shall be directly accessible from truck to facilitate equipment installation and replacement.

4. Transformer pad may be for a 1 phase PM transformer, multiple 1 phase PM transformers, or a 3 phase PM transformer.
5. Examples of cabinet equipment include: PM capacitor bank, PM switch/fuse cabinet, PM fuse cabinet, and PM meter cabinet.

No poles, transformers, PM switches, etc. over 32" high are allowed in the sight distance area.


				Electric Service Requirements		RS-5
				Clearances to Equipment Pad		
Drawn:	Eng:	Appr:	Date:	Revision: 7		Page 2 of 4
JR	TA	DA	2/16			

Clearances



NOTES:

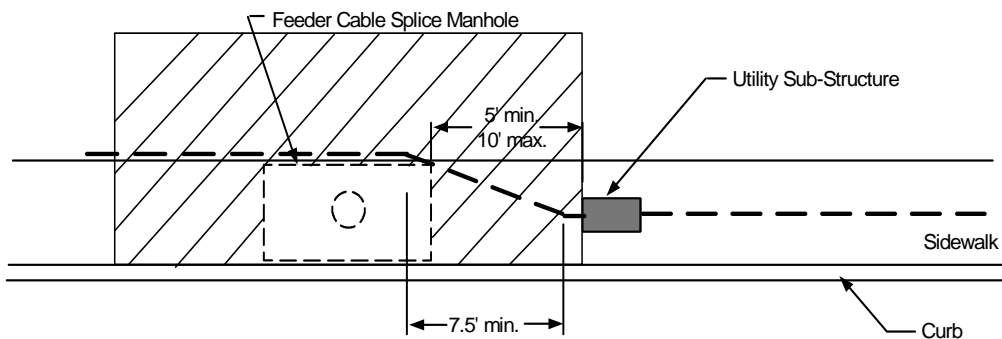
1. Do not install transformers on the apex of a Cul-de-Sac.
2. Do not install handhole, splice or pull box in driveway.
3. For a transformer in a residential area, where no sidewalk exists, concrete the area from the pad to the curb (up to 5' for 1 phase transformer) for the entire width of the transformer pad.
4. For a transformer in a commercial area, where no sidewalk exists, concrete or asphalt the area from the pad to the curb (up to 10' for 3 phase transformer) for the entire width of the transformer pad.
5. Direct all sprinkler/watering devices away from transformers, switch gear, or capacitor banks.
6. Do not obstruct access or compromise the work area to splice or pull boxes by wall(s), bushes, trees, etc.
7. There shall be a min. of 6' clearance from the equipment pad to the centerline of a fire hydrant.
8. Refer to the RTC 201.2 Sight Visibility Zone at Intersection standard for equipment setbacks.
9. Refer to RTC standard 222 & 222.1 Driveway Geometrics for construction near driveways; all objects over 2' tall must be placed at least 6' away from driveways.

				Electric Service Requirements		RS-5
				Clearances to Equipment Pad		
Drawn:	Eng:	Appr:	Date:			Revision: 7
JR	TA	DA	2/16			Page 3 of 4

Clearances


Property Use Requirements Under or Over NVE Easement or Distribution Lines

1. The following are not allowed on easements:
 - A. Pools/spas or pool equipment;
 - B. Storage sheds;
 - C. Covered parking;
 - D. Mobile homes
 - E. Trees
 - F. Customer owned poles (permanent or temporary);
 - G. Permanent structures;
 - H. Permanent storage yards
 - I. Permanent travel trailers and RV's.



NOTES:

1. To allow conduit routing around the vault, maintain minimum 5' clearance from all substructures.

				Electric Service Requirements		RS-5
				Clearances to Equipment Pad		
Drawn:	Eng:	Appr:	Date:			Revision: 7
JR	TA	DA	2/16			Page 4 of 4